

CALENDAR 1968/9

APRIL							MAY						
S		7	14	21	28		S	5	12	19	26		
M	1	8	15	22	29		M	6	13	20	27		
T	2	9	16	23	30		T	7	14	21	28		
W	3	10	17	24		W	1	8	15	22	29		
T	4	11	18	25		T	2	9	16	23	30		
F	5	12	19	26		F	3	10	17	24	31		
S	6	13	20	27		S	4	11	18	25			

JUNE							JULY						
S		2	9	16	23	30	S	7	14	21	28		
M	1	3	10	17	24		M	1	8	15	22	29	
T	4	11	18	25		T	2	9	16	23	30		
W	5	12	19	26		W	3	10	17	24	31		
T	6	13	20	27		T	4	11	18	25			
F	7	14	21	28		F	5	12	19	26			
S	8	15	22	29		S	6	13	20	27			

AUGUST							SEPTEMBER						
S		4	11	18	25		S	1	8	15	22	29	
M	5	12	19	26		M	2	9	16	23	30		
T	6	13	20	27		T	3	10	17	24			
W	7	14	21	28		W	4	11	18	25			
T	1	8	15	22	29	T	5	12	19	26			
F	2	9	16	23	30	F	6	13	20	27			
S	3	10	17	24	31	S	7	14	21	28			

OCTOBER							NOVEMBER						
S		6	13	20	27		S	3	10	17	24		
M	7	14	21	28		M	4	11	18	25			
T	1	8	15	22	29	T	5	12	19	26			
W	2	9	16	23	30	W	6	13	20	27			
T	3	10	17	24	31	T	7	14	21	28			
F	4	11	18	25		F	1	8	15	22	29		
S	5	12	19	26		S	2	9	16	23	30		

DECEMBER							JANUARY						
S	1	8	15	22	29		S	5	12	19	26		
M	2	9	16	23	30		M	6	13	20	27		
T	3	10	17	24	31		T	7	14	21	28		
W	4	11	18	25		W	1	8	15	22	29		
T	5	12	19	26		T	2	9	16	23	30		
F	6	13	20	27		F	3	10	17	24	31		
S	7	14	21	28		S	4	11	18	25			

FEBRUARY							MARCH						
S		2	9	16	23		S	2	9	16	23	30	
M	3	10	17	24		M	3	10	17	24	31		
T	4	11	18	25		T	4	11	18	25			
W	5	12	19	26		W	5	12	19	26			
T	6	13	20	27		T	6	13	20	27			
F	7	14	21	28		F	7	14	21	28			
S	8	15	22	29		S	8	15	22	29			

**EAST AFRICAN**

**EAST AFRICAN**

**time  
table**

**time  
table**



YOU MAY BOOK THROUGH



Effective Date 1st April, 1968

# TRAVEL ADVICE

## Some recommendations

- Save money by purchasing all tickets for your journey before departure.
- See your EAA-APPOINTED TRAVEL AGENT. He is there to help and will offer you complete trip planning advice at no extra cost.
- Let us know your contact address or telephone number up to departure time.
- Book your hotel accommodation at destination well in advance and check if accommodation will be provided at transfer points.
- Pack all you need during flight in a small cabin bag. All other articles should be packed in registered baggage, one case containing all that is required at night-stops.
- Keep your Cabin baggage to a minimum.
- Carry your Passport, Health Certificate and Currency with you. Do not pack them.
- Carry any valuables, such as jewellery, personally whenever possible.
- Check the "Message Board" on arrival. If friends are meeting you, give them your service and flight number.



# PASSENGER INFORMATION

**YOUR TICKET AND CONDITIONS OF CONTRACT**  
Your ticket is issued subject to these Regulations and to our General Conditions of Carriage of Passengers and Baggage. These conditions are available in all E A A offices and extracts can be found in your ticket.

**RETURN AND ONWARD BOOKINGS**  
You are requested to check your return journey and onward reservations as soon as possible after your arrival at destination or transfer point, particularly attendance and departure times.

**STOPOVERS**  
You may break your journey at one or more places en route and retain the benefit of the through fare, except where precluded by Government regulations, or on some Excursion Fares, provided notice is given before commencing the journey.

**CHILDREN AND INFANTS**  
An infant under two accompanied by an adult, and not occupying a seat, is charged 10 per cent of the normal First, Tourist or Economy Class fare. Additional infants under two accompanying the same adult, an infant under two occupying a separate seat, and children of two years and over, who have not yet reached their twelfth birthday, are charged 50 per cent of the normal First, Tourist or Economy Class adult fare. Age is taken at the beginning of the outward journey.

**PASSPORT, IMMIGRATION AND HEALTH REGULATIONS**  
Any E A A or Travel Agents' office will gladly advise you of the requirements of your journey.

**BAGGAGE**  
For each adult and child paying half the adult fare, the free allowance on First Class services is 30 kilos (66 lbs.) and on Tourist or Economy Class services is 20 kilos (44 lbs.). There is no free allowance for an infant carried at 10% of the adult fare, but infant's food for consumption en route and an infant's carrying basket may be carried free.  
However, when First Class fare has been paid and a Tourist Class service is used as part of a through journey, the First Class baggage allowance may be carried over that sector, without additional charge. Certain personal articles may be carried free, and details of these may be obtained from any E A A or Travel Agents' Office. Brief cases, cabin bags, attache cases, parcels, typewriters and heavy cameras are weighed as part of your free allowance. If this is exceeded you become liable to excess charges.  
Details of excess baggage charges and excess value charges (valuable baggage) can be obtained from any E A A or Travel Agents' office.

**YOUR DEPARTURE**  
It is essential to attend at the departure terminal or airport not later than the time advised. This allows the minimum time to complete all formalities. Flights cannot be delayed for passengers arriving late and we cannot accept responsibility in such cases.  
Attendance times should always be checked prior to departure date. These times vary according to the type of aircraft and according to the distance between Town Terminal and Airport.

**CANCELLATIONS**  
Passengers who do not travel on the service for which they hold a reservation, and who have not cancelled in advance, are liable to payment of a "no-show" charge. Refund of fare for reservations cancelled or transferred at short notice cannot be guaranteed.

**ABBREVIATIONS**  
The following abbreviations are used in this Timetable:  
CATERING SERVICES—Breakfast, Lunch or Dinner . . . . . X  
Light Refreshments . . . . . ?

**EAST AFRICAN AIRWAYS FLIGHT PREFIX DENOTES AIRCRAFT TYPE**

AIRCRAFT	TYPE	FLIGHT PREFIX	EXAMPLE
VC10	SUPER VC 10	7	EC 720
COM	COMET 4	8	EC 817
F27	FRIENDSHIP	3	EC 319
DC3	DAKOTA	0	EC 040
DH6	TWIN OTTER	2	EC 211
		VC10	V10
<b>OTHER CARRIERS</b>		Boeing 720B	B720
		Boeing 707	B707
<b>AIRLINES</b>			
E.A.A.	EC	B.O.A.C.	BA
Air India	AI	B.U.A.	BB
		ETHIOPIAN AIRLINES	ET
<b>CLASSES</b>			
First Class	F	Freighter Service	*
Tourist Class	T		
Economy Class	Y		

# TIMETABLE

## Contents

Passenger Information . . . . . 1

International Route Map . . . . . 2

E A A Domestic and Regional Route Map . . . . . 3

Passenger Schedules . . . . . 4-17

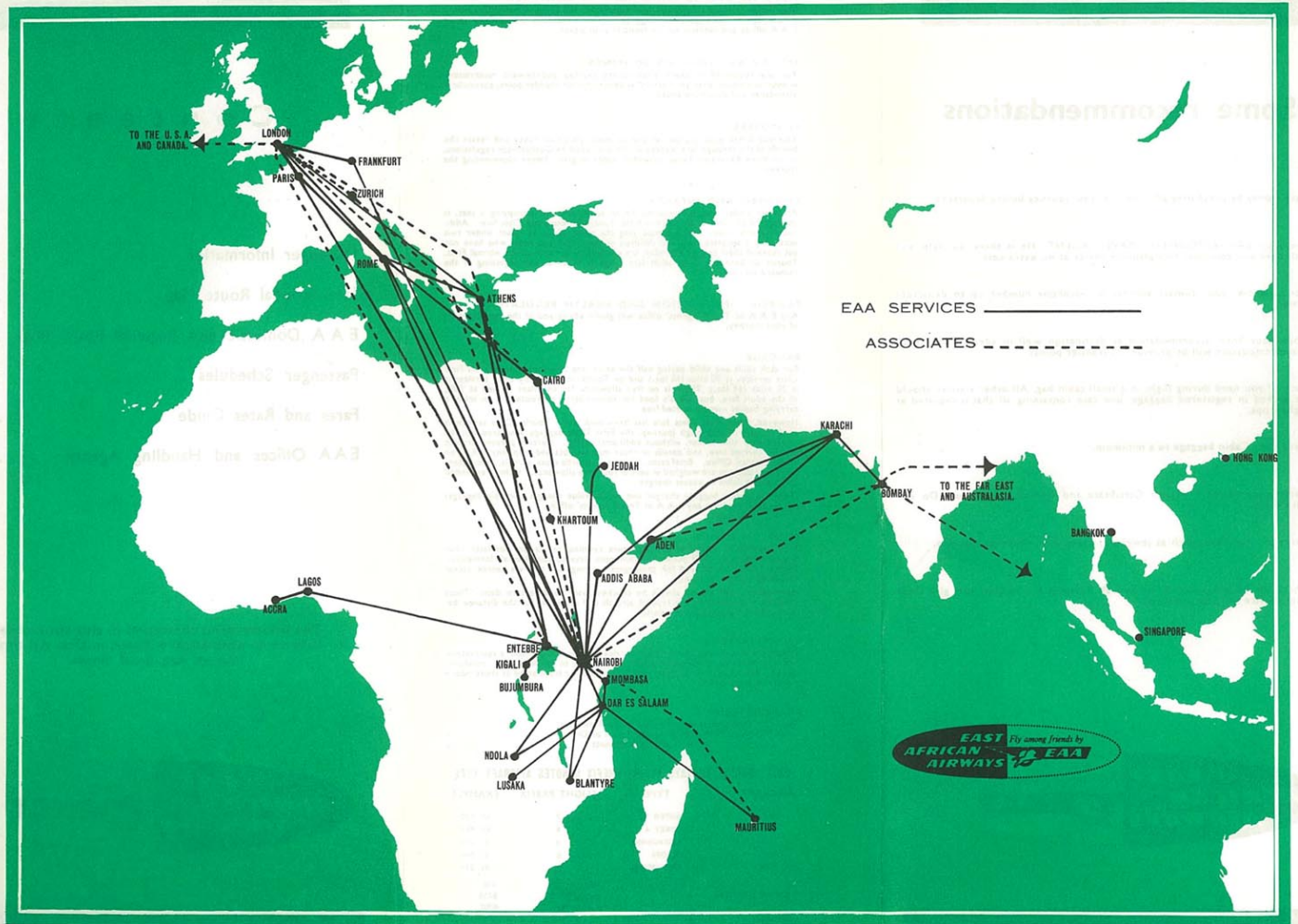
Fares and Rates Guide . . . . . 18-23

EAA Offices and Handling Agents . . . . . 27

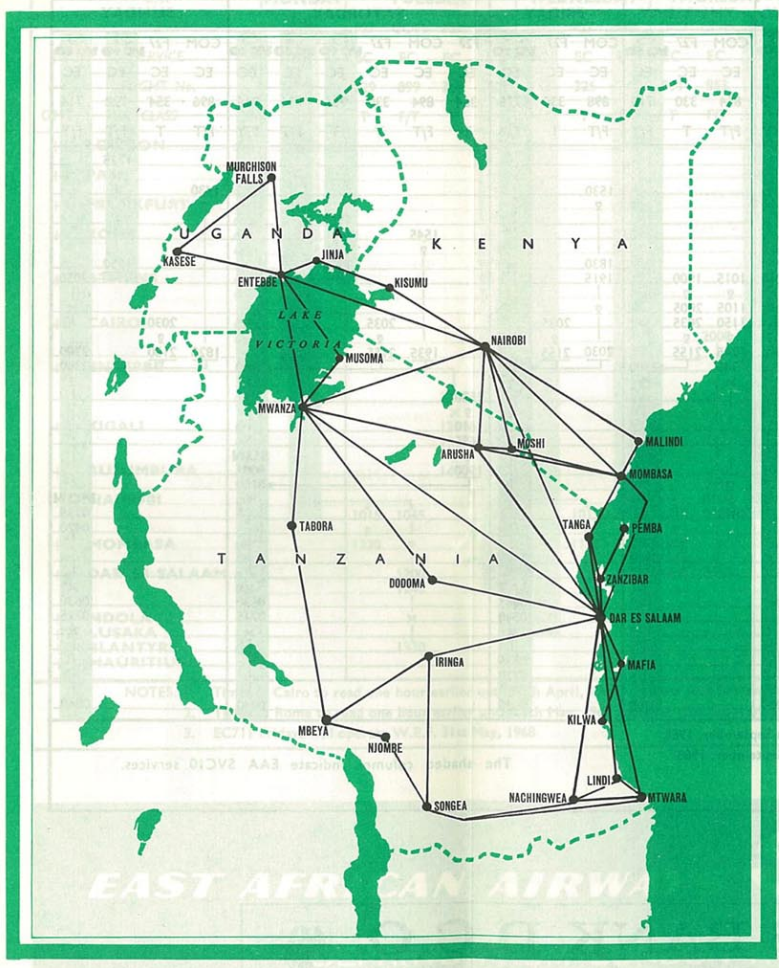
The information contained in this timetable is subject to alteration without notice. All times shown are local times.



# INTERNATIONAL ROUTES



### EAST AFRICA



### AFRICA

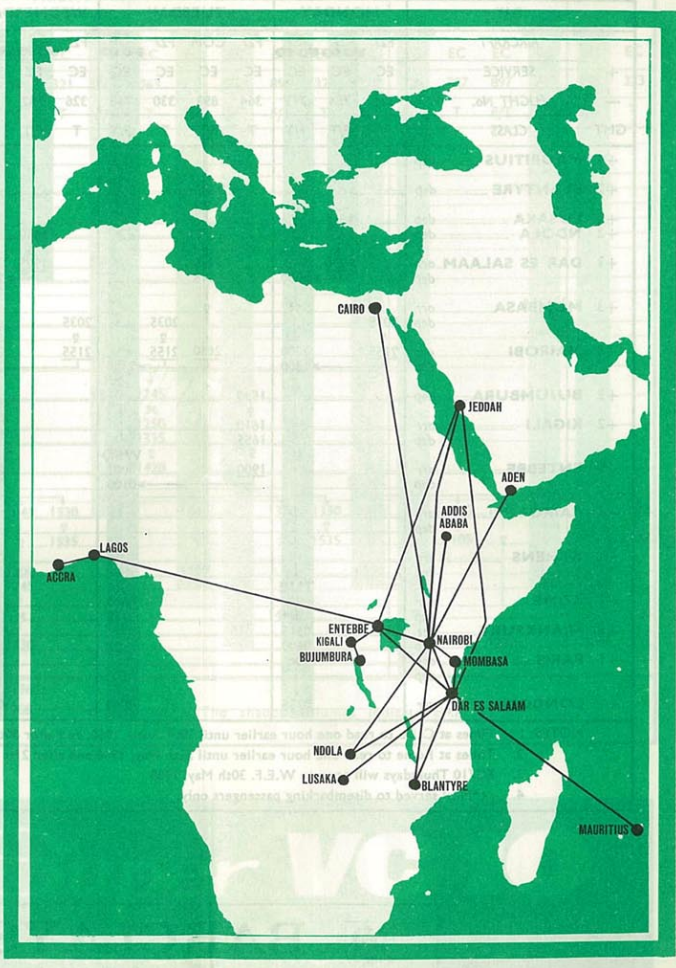


TABLE I  
**MAURITIUS/MALAWI/ZAMBIA/EAST AFRICA/U.A.R./GREECE/ITALY/GERMANY/France/U.K.**

DAY	MONDAY			TUESDAY			WEDNESDAY			THURSDAY			FRIDAY			SATURDAY					SUNDAY								
AIRCRAFT	F27	VC 10	VC 10	F27	COM	F27	VC 10	VC 10	F27	VC 10	VC 10	COM	F27	VC 10	VC 10	F27	COM	F27	VC 10	VC 10	VC 10	VC 10	COM	F27	VC 10	VC 10	VC 10		
+ SERVICE	EC	EC	EC	EC	EC	EC	EC	EC	EC	EC	EC	EC	EC	EC	EC	EC	EC	EC	EC	EC	EC	EC	EC	EC	EC	EC	EC	EC	
- FLIGHT No.	326	754	712	364	898	330	716	326	752	720	854	330	710	898	330	718	364	894	330	756	736	716	896	354	728	714			
GMT CLASS	T	F/T	F/Y	T	F/T	T	F/Y	T	F/T	F/Y	F/T	T	F/Y	F/T	T	F/Y	T	F/T	T	T	F/T	F/Y	F/T	T	F/T	F/Y			
+4 MAURITIUS dep																											1725		
+2 BLANTYRE dep				1530										1530										1430					
+2 LUSAKA dep	1615																			1545									
+2 NDOLA dep																													
+3 DAR ES SALAAM arr	1930			1830										1830														1950	
dep			2050	1915							2050	1015	1900	1915														2050	
+3 MOMBASA arr																													
dep	2035																												
+3 NAIROBI arr	2155		2200	2030	2155		2300		2155	2200	2300	1105	2005	2035		2035											2030		
dep			2300									1345		2300		2300											2150	2200	
+2 BUJUMBURA dep				1530																									
+2 KIGALI arr				1610																									
dep				1655																									
+3 ENTEBBE arr				1900																									
dep																													
+3 CAIRO arr																													
dep																													
+2 ATHENS arr																													
dep																													
+2 ROME arr																													
dep																													
+1 FRANKFURT arr																													
dep																													
+1 PARIS arr																													
dep																													
+1 LONDON arr																													
dep																													
arr																													

NOTES: 1. Times at Cairo to read one hour earlier until 30th April, 1968, and after 30th September, 1968.  
 2. Times at Rome to read one hour earlier until 26th May, 1968 and after 21st September, 1968.  
 3. EC710 Thursdays will operate W.E.F. 30th May, 1968  
 4. \*Meal served to disembarking passengers only.

The shaded columns indicate EAA SVC10 services.


BARCLAYS BANK D.C.O.


provide a first class service for all travellers.

TABLE 2

**U.K./FRANCE/GERMANY/ITALY/GREECE/U.A.R./EAST AFRICA/ZAMBIA/MALAWI/MAURITIUS**

DAY	MONDAY	TUESDAY	WEDNESDAY	THURSDAY	FRIDAY	SATURDAY	SUNDAY	MONDAY
AIRCRAFT	S VC10	F27 COM F27	S VC10 S VC10 F27	DC3 COM S VC10	COM F27 S VC10	F27 S VC10 S VC10 COM F27	S VC10 S VC10 F27 COM	S VC10 S VC10 F27
SERVICE	EC	EC EC EC	EC EC EC	EC EC EC	EC EC EC	EC EC EC	EC EC EC	EC EC EC
FLIGHT No.	715	329 899 363	713 753 325 715	031 853 721	899 321 711	363 735 755 895 321 719 729	307 897 717	755 323
CLASS	F/Y	T F/T T	F/Y F/T T F/Y	T F/T F/Y	F/T T F/Y	T F/T F/T F/T T	F/Y F/T T F/T	F/Y F/T T
+1 LONDON dep	2000		2000		2000		2000	2000
+1 PARIS arr	x		x		x		x	x
+1 FRANKFURT arr								
+2 ROME dep	2315		2315		2315			2315
+2 ATHENS arr	?		0140		0020			?
+3 CAIRO arr					2000			0355
+3 ENTEBBE arr	TUE 0710			THU 0710				0440
+2 KIGALI arr	0810	1245		0810		0830		
+2 BUJUMBURA arr		1250				1245		
+3 NAIROBI arr	0910	1015 1045	0910	1015	FRI 0100 0200 0800	0930	SUN 0740	0915
+3 MOMBASA arr		1230		1135		1045 1330 1535	1020 1300 1330 1535	1100 1305
+3 DAR ES SALAAM arr		1200 1245	1155	1300 1435	0315	1200 1245	1130 1300 1430 1515	1155 1300
+2 NDOLA arr			1400					
+2 LUSAKA arr								
+2 BLANTYRE arr		1330			1330		1220	1415
+4 MAURITIUS arr								

NOTES: 1. Times at Cairo to read one hour earlier until 30th April, 1968 and after 30th September, 1968.  
 2. Times at Rome to read one hour earlier until 26th May, 1968 and after 21st September, 1968.  
 3. EC711 Fridays will operate W.E.F. 31st May, 1968

The shaded columns indicate EAA SVC10 services.

**EAST AFRICAN AIRWAYS Super VC 10**  
 DEPARTS FROM LONDON AT 8 P.M. EVERY NIGHT



# JET *Super* VC10 TO ROME

**TABLE 3 ZAMBIA/EAST AFRICA/ETHIOPIA/S. YEMEN/PAKISTAN/INDIA**

DAY	MONDAY		THURSDAY	FRIDAY		SATURDAY					
	COM	SVC10	COM	F27	COM	SVC10	F27	COM	F27	SVC10	SVC10
+	EC	EC	EC	EC	EC	EC	EC	EC	EC	EC	EC
-	816	732	872	316	804	734	356	894	364	756	736
FLIGHT No.											
GMT	CLASS	F/T/Y	F/T	T	F/T	F/T/Y	T	F/T	T	F/T	F/Y
+2 LUSAKA	dep									1545	?
+2 NDOLA	arr								1545	?	
+3 DAR ES SALAAM	arr								1900	?	1950
	0700				0700						
+3 MOMBASA	arr				0750				1700		?
	0835				0835						
+2 BUJUMBURA	dep									1530	
+2 KIGALI	arr									1610	
										1655	
+3 ENTEBBE	arr									1900	
										1945	
+3 NAIROBI	arr				0745				1905	1935	2115
	0930	0930			0915	0930					2100
	1030			0700		1030					2200
+3 ADDIS ABABA	arr				1220						?
					1320						?
+3 ADEN	arr										?
	1305										?
	1405										?
+5 KARACHI	arr										SUN
	1940										0535
	2040										0635
+5 BOMBAY	arr										24
	2245										0840

NOTE: 1. No local traffic may be carried Karachi-Bombay on EC734 Fridays.

**TABLE 4 INDIA/PAKISTAN/S. YEMEN/ETHIOPIA/EAST AFRICA/ZAMBIA/MALAWI**

DAY	TUESDAY				THURSDAY			SATURDAY				SUNDAY		
	SVC10	F27	F27	COM	COM	COM	F27	SVC10	F27	COM	F27	SVC10	F27	COM
+	EC	EC	EC	EC	EC	EC	EC	EC	EC	EC	EC	EC	EC	EC
-	731	329	363	899	871	843	335	735	755	363	895	321	733	353
FLIGHT No.														
GMT	CLASS	F/Y	T	T	F/T	F/T	T	F/T/Y	F/T	T	F/T	T	F/T/Y	T
+5 BOMBAY	dep	0150						0150					1030	
+5 KARACHI	arr	0300						0300					1140	
	0400							0400					1240	
+3 ADEN	arr												1410	
	dep												1510	
+3 ADDIS ABABA	arr							0630					1740	
	dep				0950			0730					1840	
+3 NAIROBI	arr							0920					1830	
	dep	0740	1015	1030	1045	1140		1020		1030	1300	1330	1830	2230
+3 ENTEBBE	arr												1940	
	dep				1200					1200				
					1245					1245				
+2 KIGALI	arr									1250				
	dep				1335					1335				
+2 BUJUMBURA	arr									1420				
+3 MOMBASA	arr				1230			1535			1535		1950	
	dep				1405			1805						
+3 DAR ES SALAAM	arr				1200			1120						2345
	dep				1245			1300						
+2 NDOLA	arr									1430				
+2 LUSAKA	arr													
+2 BLANTYRE	arr									1415				

NOTES: 1. No local traffic may be carried Bombay-Karachi on EC735 Saturdays.  
2. \* Meal served to joining passengers only.

The shaded columns indicate EAA SVC10 services.

**TABLE 5 EAST AFRICA/ZAMBIA/MALAWI/MAURITIUS**

DAY	MONDAY	TUESDAY	WEDNESDAY	FRIDAY	SATURDAY	SUNDAY
AIRCRAFT	F27 S S S	F27 S COM	F27 DC3 S S	F27 F27 COM	F27 S S S	F27 S S DC3 COM
+	EC EC EC EC	EC EC EC	EC EC EC EC	EC EC EC	EC EC EC EC EC	EC EC EC EC
-	FLIGHT No.	305 732 717 755	303 715 899	305 012 713 753	301 316 899	711 735 303 755 895 719 729 012 897
GMT CLASS	T F/T F/T F/T	T F/T F/T	T T F/T F/T	T T F/T	F/T F/T T F/T F/T	F/T F/T T F/T
+3 ENTEBBE dep	0830	0810	0700	0745	0830	0700
+3 NAIROBI arr	0930	0910	0905	0915	0930	0905
+3 MOMBASA dep	0950	0950	0950	0950	0950	0950
+3 DAR ES SALAAM arr	1120	1155	1120	1155	1130	1050
+2 NDOLA arr						
+2 LUSAKA arr		1415		1400		1430
+2 BLANTYRE arr					1415	
+4 MAURITIUS arr		1330		1330		1515

NOTE: 1. EC711 Saturdays operates W.E.F. 1st June, 1968.

**TABLE 7 TRANS AFRICA**

DAY	TUESDAY	THURSDAY	SATURDAY
AIRCRAFT	COM F27	F27 F27 COM	DC3 F27
+	EC EC EC	EC EC EC	EC EC EC
-	FLIGHT No.	804 363 306 328 843	036 363
GMT CLASS	F/T T	T T F/T	T T
+3 DAR ES SALAAM dep	0700	0730	0645
+3 MOMBASA arr	0750	0800	0645
+3 NAIROBI arr	0930	1015 1110	1000
+3 ENTEBBE arr	1200	1245	1200
+2 KIGALI arr	1250	1335	1250
+2 BUJUMBURA arr	1420	1710	1420
+1 LAGOS arr		1755	
GMT ACCRA arr		1815	

NOTE: 1. (A) No local traffic may be carried Lagos-Accra on EC843 Thursdays.

**TABLE 6 MAURITIUS/MALAWI/ZAMBIA/EAST AFRICA**

DAY	MONDAY	TUESDAY	WEDNESDAY	FRIDAY	SATURDAY	SUNDAY
AIRCRAFT	S S S	COM F27 S	S S S	COM F27	COM S S S	COM S S S
+	EC EC EC	EC EC EC	EC EC EC	EC EC EC	EC EC EC EC	EC EC EC EC
-	FLIGHT No.	754 712 898 330 716	752 720 898 330	894 756 736 716	896 728 714	
GMT CLASS	F/T F/T	F/T T F/T	F/T F/T	F/T T	F/T F/T F/T F/T	F/T F/T F/T
+4 MAURITIUS dep						1725
+2 BLANTYRE dep		1530		1530		1430
+2 LUSAKA dep	1615				1545	
+2 NDOLA dep			1630			
+3 DAR ES SALAAM arr	1930	1830	1925	1830	1900	1950
+3 MOMBASA arr		2050		1915	1900	
+3 NAIROBI arr		2200		2030	2100	1820
+3 ENTEBBE arr						2200

**TABLE 8 TRANS AFRICA**

DAY	TUESDAY	FRIDAY	SATURDAY
AIRCRAFT	F27 COM	COM	F27
+	EC EC EC	EC EC EC	EC EC EC
-	FLIGHT No.	364 805 844	364
GMT CLASS	T F/T	F/T	T
GMT ACCRA dep		0800	
+1 LAGOS arr		(A) 1000	
+2 BUJUMBURA dep	1530		1530
+2 KIGALI arr	1610		1610
+3 ENTEBBE arr	1900	1745	1900
+3 NAIROBI arr	2115	1930	2115
+3 DAR ES SALAAM arr		2345	2145

NOTE: 1. (A) No local traffic may be carried Accra-Lagos on EC844 Fridays.



TABLE 9

UGANDA/KENYA/TANZANIA—INTER-CITY COASTAL ROUTE

DAY	MONDAY										TUESDAY							WEDNESDAY							THURSDAY													
AIRCRAFT	F27	DC3	DH6	DC3	F27	DH6	F27	COM	F27	DC3	F27	COM	F27	F27	COM	DC3	F27	DH6	DC3	DC3	F27	DC3	DH6	F27	COM	F27	F27	F27	COM	F27	F27	F27	COM					
SERVICE	EC	EC	EC	EC	EC	EC	EC	EC	EC	EC	EC	EC	EC	EC	EC	EC	EC	EC	EC	EC	EC	EC	EC	EC	EC	EC	EC	EC	EC	EC	EC	EC						
FLIGHT No.	305	732	231	029	717	323	219	309	817	303	715	329	899	335	357	364	805	051	305	201	012	029	325	713	205	333	817	357	303	715	031	203	335	314	327			
CLASS	T	F/T	T	T	F/T	T	T	T	F/T	T	F/T	T	F/T	T	T	F/T	*	T	T	T	T	T	F/T	T	T	F/T	T	T	F/T	T	T	T	T	T				
ENTEBBE dep	0830								1500	0810						1945																						
NAIROBI arr	0930								1600	0910						2115																						
ARUSHA arr																																						
MOSHI arr																																						
MALINDI arr																																						
MOMBASA arr																																						
TANGA arr																																						
PEMBA arr																																						
ZANZIBAR arr																																						
DAR ES SALAAM arr																																						

The shaded columns indicate the fast "INTER-CITY" services.

TABLE 10

TANZANIA/KENYA/UGANDA—INTER-CITY COASTAL ROUTE

DAY	MONDAY										TUESDAY							WEDNESDAY							THURSDAY														
AIRCRAFT	DC3	COM	F27	F27	F27	DH6	DC3	F27	COM	F27	F27	DC3	DC3	F27	COM	F27	DC3	COM	F27	DH6	F27	DH6	F27	COM	F27	F27	F27	COM	COM	DH6	F27	DC3	F27						
SERVICE	EC	EC	EC	EC	EC	EC	EC	EC	EC	EC	EC	EC	EC	EC	EC	EC	EC	EC	EC	EC	EC	EC	EC	EC	EC	EC	EC	EC	EC	EC	EC	EC	EC						
FLIGHT No.	036	816	334	324	371	218	052	326	712	804	363	332	064	011	304	898	330	716	352	036	816	336	202	304	206	326	720	306	315	328	843	854	204	308	032	330			
CLASS	T	F/T	T	T	T	T	*	T	F/T	F/T	T	T	T	T	T	F/T	T	F/T	T	T	T	T	T	F/T	T	T	T	F/T	F/T	T	T	T	T						
DAR ES SALAAM dep	0645	0700	0730			1400	1700	1830	2050	0700						0730																							
ZANZIBAR arr																																							
PEMBA arr																																							
TANGA arr																																							
MOMBASA arr																																							
MALINDI arr																																							
MOSHI arr																																							
ARUSHA arr																																							
NAIROBI arr																																							
ENTEBBE arr																																							

The shaded columns indicate the fast "INTER-CITY" services.

TABLE 9 CONTINUED

UGANDA/KENYA/TANZANIA-INTER-CITY COASTAL ROUTE

FRIDAY												SATURDAY												SUNDAY												DAY
COM	F27	DH6	F27	DC3	COM	F27	DC3	DH6	F27	F27	F27	COM	F27	DH6	DC3	F27	F27	DH6	DC3	F27	F27	COM	F27	DH6	DC3	F27	F27	COM	F27	DH6	DC3	F27	F27	COM	AIRCRAFT	
853	301	201	316	063	899	321	027	207	312	331	355	844	303	201	711	735	318	321	207	035	331	327	221	719	307	318	351	209	005	319	353	805	SERVICE			
F/T	T	T	T	T	F/T	T	T	T	T	T	T	F/T	T	T	F/T	F/T	T	T	T	T	T	T	T	T	F/T	T	T	T	T	T	T	T	F/T	CLASS		
			0745																															dep.	ENTEBBE	
			0915																															arr.	NAIROBI	
0200	0715			1045	1045	1330	1400																											arr.	ARUSHA	
				1145			1500																												arr.	MOSHI
				1200			1515																												arr.	MALINDI
				0805																															arr.	MOMBASA
				0825																															arr.	TANGA
																																			arr.	PEMBA
																																			arr.	ZANZIBAR
0315	1100	1040																																arr.	DAR ES SALAAM	
	1130	1055																																	arr.	
	1150	1125																																	arr.	

NOTE: 1. EC711 Saturdays operates W.E.F. 1st June 1968.

The shaded columns indicate the fast "INTER-CITY" services.

TABLE 10 CONTINUED

TANZANIA/KENYA/UGANDA-INTER-CITY COASTAL ROUTE

FRIDAY												SATURDAY												SUNDAY												DAY	
COM	F27	DC3	DH6	F27	DH6	F27	COM	F27	DC3	F27	DH6	COM	F27	DH6	F27	DC3	F27	DH6	DC3	F27	F27	COM	F27	DH6	DC3	F27	F27	COM	F27	DH6	DC3	F27	F27	COM	AIRCRAFT		
804	313	334	030	202	302	208	358	373	898	330	036	363	336	202	806	302	208	356	330	736	716	220	320	302	733	210	356	230	354	714				FLIGHT No.			
F/T	T	T	T	T	T	T	F/T	T	T	T	T	T	T	T	T	T	T	T	T	T	T	F/T	F/T	T	T	T	T	T	T	T	F/T	CLASS					
0700			0730	0745	0800	1400	1645																												dep.	DAR ES SALAAM	
																																				arr.	ZANZIBAR
																																				arr.	PEMBA
																																				arr.	TANGA
																																				arr.	MOMBASA
																																				arr.	MALINDI
																																				arr.	MOSHI
																																				arr.	ARUSHA
																																				arr.	NAIROBI
																																				arr.	ENTEBBE

The shaded columns indicate the fast "INTER-CITY" services.

TABLE 11  
KENYA/UGANDA (TANZANIA)

DAY	MONDAY			TUESDAY				WEDNESDAY			THURSDAY				FRIDAY				SATURDAY				SUNDAY									
AIRCRAFT	DC3	COM	F27	DC3	DC3	F27	DC3	DC3	COM	DC3	F27	COM	F27	DC3	F27	COM	F27	DH6	F27	DC3	F27	DH6	F27	F27	DC3	F27	F27	DC3	F27	F27		
SERVICE	EC	EC	EC	EC	EC	EC	EC	EC	EC	EC	EC	EC	EC	EC	EC	EC	EC	EC	EC	EC	EC	EC	EC	EC	EC	EC	EC	EC	EC	EC		
FLIGHT No.	013	816	371	037	015	363	011	716	263	816	720	039	315	843	371	263	313	063	373	263	311	363	716	317	320	733						
CLASS	T	F/T	T	T	T	T	F/T	T	F/T	F/T	T	T	F/T	T	T	T	T	T	T	T	T	T	T	F/T	T	T	F/T	T	T			
NAIROBI	dep 0630	1100	1800								0730	1100	2300																			
KISUMU	arr 0745			0630	0745	1030	1400	2300																								
JINJA	arr 0800			0745							0845																					
	arr 0850			0800							0900																					
	dep 0905			0850							0950																					
ENTEBBE	arr 0935	1200	1930	0935	0950	1200	1605	0001	1035	1200	0001	0935	1230	1345	1930	1035	1130		2030	1035	0930	1200	0001	1000	1400	1940						
MUSOMA	arr																															
MWANZA	arr																															
DODOMA	arr																															
DAR ES SALAAM	arr																															
ARUSHA	arr																															
MWANZA	arr																															
MUSOMA	arr																															
ENTEBBE	arr																															

TABLE 12  
(TANZANIA) UGANDA/KENYA

DAY	MONDAY			TUESDAY				WEDNESDAY			THURSDAY				FRIDAY				SATURDAY				SUNDAY									
AIRCRAFT	DC3	COM	F27	DC3	DC3	F27	DC3	COM	DC3	DC3	COM	F27	DH6	F27	F27	F27	DH6	COM	F27	DC3	F27	DH6	DC3	F27	DC3	F27	F27	DC3	F27	F27		
SERVICE	EC	EC	EC	EC	EC	EC	EC	EC	EC	EC	EC	EC	EC	EC	EC	EC	EC	EC	EC	EC	EC	EC	EC	EC	EC	EC	EC	EC	EC	EC		
FLIGHT No.	732	016	817	040	372	715	064	014	364	012	817	044	715	264	314	316	312	266	844	374	711	318	266	038	364	012	318	319				
CLASS	F/T	T	F/T	T	T	T	F/T	T	T	T	F/T	T	F/T	T	T	T	T	T	F/T	T	F/T	T	T	T	T	T	T	T	T			
ENTEBBE	dep					0745																										
MUSOMA	arr					0850																										
MWANZA	arr					0905																										
	arr					0950																										
	dep					1005																										
ARUSHA	arr					1150																										
	dep					1205																										
DAR ES SALAAM	dep												0700												1145							
DODOMA	arr												0840																			
	dep												0900																			
MWANZA	arr												1110																			
	dep												1130																			
MUSOMA	arr												1215																			
	dep												1230																			
ENTEBBE	arr												1335																			
	dep	0830	1000	1500	1520	2030	0810		1500	1945	0700	1500	1415	0810	1515	1530	0745	1230	1400	1830	2115	0830	1100	1400		1945	0700	1100	1445			
JINJA	arr																															
	dep																															
KISUMU	arr																															
	dep																															
NAIROBI	arr	0930	1310	1600																												
	dep																															

NOTE: 1. EC711 Saturdays Operates W.E.F. 1st June, 1968

The shaded columns indicate the fast "INTER-CITY" services.

ZAMBIA/EAST AFRICA/ETHIOPIA/S. YEMEN/PAKISTAN/INDIA  
TANZANIA CENTRAL

TABLE 13

TANZANIA CENTRAL

DAY	MONDAY	TUESDAY	WEDNESDAY	THURSDAY	FRIDAY	SATURDAY	SUNDAY
AIRCRAFT	DC3 DC3	DC3 DC3	DC3 DC3	DC3 DC3 DC3	DC3	DC3 DC3	DC3
SERVICE	EC EC	EC EC	EC EC	EC EC EC	EC	EC EC	EC
FLIGHT No.	081 040	082 037	083 044	070 084 039	085	086 038	070
CLASS	T T	T T	T T	T T T	T	T T	T
DAR ES SALAAM .dep	0630 .0930	0630	0630 0700	0800 0800	0630	0630 1145	0800
IRINGA .arr	0805		0805		0805	0805	
IRINGA .dep	0825		0825		0825	0825	
SONGEA .arr						0945	
NJOMBE .arr						1005	
NJOMBE .dep						1055	
MBEYA .arr	0940	FROM	0940		FROM	0940	
MBEYA .dep	1000	M	1000	AND	E	1000	
DODOMA .arr		S		M	N		
DODOMA .dep	1110	O	0840	T	T		
TABORA .arr	1150	M	0900	W	E	1150	
TABORA .dep	1210	A		A	B	1210	
MWANZA .arr	1320 1340	0955 1205	1110	1125 1110	1320	1510	
MWANZA .dep	1350 1410	1015 1235	1130	1145 1130	1350	1530	
TABORA .arr		TO		TO		TO	
TABORA .dep		N		M		N	
DODOMA .arr		E		S		E	
DODOMA .dep		B		O		B	
MBEYA .arr		E		M		E	
NJOMBE .arr			1045				
NJOMBE .dep			1105				
SONGEA .arr			1155	1255			1255
SONGEA .dep			1215	1315			1315
IRINGA .arr		1510	1335	TO NCH		1335	TO NCH
IRINGA .dep		1530	1355	& MYW	1640 1700	1355	& MYW
DAR ES SALAAM .arr	1715	1705 1645	1530	1805 1835 1540	1715	1530	1805



**JET** *Super* **VC10** **TO**  
**PARIS**

# JET *Super* VC10 TO LONDON



TABLE 15  
TANZANIA SOUTHERN

DAY	MONDAY	TUESDAY	WEDNESDAY	THURSDAY	FRIDAY	SATURDAY	SUNDAY
AIRCRAFT	F27	DH6 F27	F27	DH6 DC3	DC3 DH6	DC3 DH6	DC3 DH6
SERVICE	EC	EC EC	EC	EC EC	EC EC	EC EC	EC EC
FLIGHT No.	395	211 393	397	211 070	071 212	073 214	070 216
CLASS	T	T T	T	T T	T T	T T	T T
DAR ES SALAAM dep	1330	0800 1500	1400	0800 0800	0700 1430	0645 1300	0800 1715
MAFIA arr	?	0845 ?	?	0845 ?	?	1515 ?	1345 ?
MAFIA dep		0900		0900	1530	1400	1800
KILWA arr		0940		0940			1815
MAFIA dep		0955		0955			
MAFIA arr		1035		1035			
LINDI dep		1050		1050			
LINDI arr		1605		0925		0810	0925
LINDI dep		1635		0955		0840	0955
MTWARA arr	1445	1655	1515	1020	0845	0905	1020
MTWARA dep	1515	1725	1545	1050	0915	0930	1050
SONGEA arr		?		1255		?	1255
SONGEA dep				1315			1315
NACHINGWEA arr				1445			1445
NACHINGWEA dep				1505			1505
MTWARA arr				1550			1550
MTWARA dep				1620			1620
LINDI arr	1535		1605	?	0940		?
LINDI dep	1605		1635		1010		
LINDI arr	?		?		?		
DAR ES SALAAM arr	1710	1135 1840	1740	1135 1805	1135 1615	1115 1445	1805 1900

TABLE 14  
UGANDA INTERNAL

DAY	TUE	THU	SAT
AIRCRAFT	DC3	DH6	DC3
SERVICE	EC	EC	EC
FLIGHT No.	068	267	068
CLASS	T	T	T
ENTEBBE dep	1015	1015	1015
ENTEBBE arr	?	?	?
KASESE dep	1125	1125	1125
KASESE arr	1140	1140	1140
MURCHISON FALLS dep	?	?	?
MURCHISON FALLS arr	1255	1125	1255
MURCHISON FALLS dep	1310	1140	1310
MURCHISON FALLS arr	?	?	?
KASESE dep	?	1255	?
KASESE arr	?	1310	?
ENTEBBE dep	1420	1420	1420

**TABLE 16**  
**ZAMBIA/EAST AFRICA/ETHIOPIA/S. YEMEN/PAKISTAN/INDIA**

DAY	MONDAY	WEDNESDAY	THURSDAY	FRIDAY	SATURDAY	SUNDAY
AIRCRAFT	B720B COM <sup>S</sup> VC10	B720B DC3 F27 B707	COM F27 F27 B707	F27 COM <sup>S</sup> VC10	B720B F27 COM <sup>S</sup> VC10 VC10	F27 F27 B707
+ SERVICE	ET EC EC	ET EC EC AI	EC EC EC AI	EC EC EC	ET EC EC EC EC	EC EC AI
- FLIGHT No.	790 816 732	784 012 336 204	872 314 308 206	316 804 734	792 356 894 756 736	320 318 212
GMT CLASS	F/T F/T F/T/Y	F/T T T F/Y	F/T T T F/Y	T F/T F/T/Y	F/T T F/T F/T F/Y	T T F/T/Y
+2 LUSAKA dep					1545	
+2 NDOLA dep					1545	
+3 DAR ES SALAAM arr					1900	
+3 MOMBASA arr	0700	0730	1400	0700	1950	0730
+3 ENTEBBE dep	0750	0930	1600	0750		0905
+3 NAIROBI arr	0835	1000	1630	0835	1700	0935
+3 ADDIS ABABA arr		0700	1530	0745		1100
+3 ADEN arr		0905 1205	1700 1835	0915 0930	1905 1935	2100
+5 KARACHI arr	0835 0930 1030	0835	0700	1030	0835	1150 1230
+5 BOMBAY arr	1015	1015	0850	1220 1320	1015	1620 1710
				FRI 0420		SUN 0840

NOTE: 1. No local traffic may be carried Karachi-Bombay on EC734 Fridays.

**TABLE 17**  
**INDIA/PAKISTAN/S. YEMEN/ETHIOPIA/EAST AFRICA/ZAMBIA/MALAWI**

DAY	TUESDAY	WEDNESDAY	THURSDAY	FRIDAY	SATURDAY	SUNDAY
AIRCRAFT	VC10 F27 F27 COM B720B F27 DC3	B707 F27	COM COM F27 B707 F27	B720B F27	VC10 VC10 VC10 F27 COM F27	B720B B707 F27 DC3 VC10 F27 COM
+ SERVICE	EC EC EC EC ET EC EC	AI EC	EC EC EC AI EC	ET EC	EC EC EC EC EC	ET AI EC EC EC EC EC
- FLIGHT No.	731 329 363 899 785 335 011	205 333	871 843 335 207 327	793 321	735 755 363 895 321	791 215 351 005 733 353 805
GMT CLASS	F/Y T T F/T F/T T T	F/T/Y T	F/T F/T T F/Y T	F/T T	F/T/Y F/T T F/T T	F/T F/Y T T F/T/Y T F/T
+5 BOMBAY dep	0150	0700	1500	0150	0900	1030
+5 KARACHI arr	0300			0300		1140
+3 ADEN arr	0400	0800		0400		1240
+3 ADDIS ABABA arr		0910				1410
+3 NAIROBI arr			0950	1015	0630	1510
+3 DAR ES SALAAM arr					0730	
+3 MOMBASA arr	0740 1015 1030 1045 1155	1140	1140 1245 1330 1800	1155 0920	1030 1300 1330	1155 1200 1330 1345 1840 1830 2230
+3 ENTEBBE arr	1230	1200	1535 1605	1535 1605	1200	1535 1535 1940 1950
+3 NDOLA arr	1200	1805	1745	1805 2225	1805 1130	1700 2345
+2 LUSAKA arr	1245				1430	
+2 BLANTYRE arr	1330				1415	

NOTES: 1. No local traffic may be carried Bombay-Karachi on EC735 Saturdays.  
2. \*Meal served to joining passengers only.

TABLE 18

AFRICA TO EUROPE SERVICES

DAY	MONDAY				TUESDAY				WEDNESDAY				THURSDAY				FRIDAY				SATURDAY				SUNDAY			
	V10	COM	EC	BA	V10	COM	EC	BA	V10	V10	V10	COM	V10	COM	V10	COM	V10	V10	V10	COM	V10	V10	V10	COM	V10	V10	V10	COM
AIRCRAFT	BA	EC	EC	BA	BA	EC	EC	BA	BA	BA	BA	EC	BA	EC	BR	EC	BA	BR	EC	EC	BA	BA	EC	EC	BA	BA	EC	EC
FLIGHT No.	118	754	712	168	116	898	716	146	120	108	144	752	124	854	212	710	124	104	898	718	130	164	128	112	894	756	736	716
GMT CLASS	F/Y	F/T	F/Y	F/Y	F/Y	F/T	F/Y	F/Y	F/Y	F/Y	F/Y	F/T	F/Y	F/T	Y	F/Y	F/Y	Y	F/T	F/Y	F/Y	F/Y	F/T	F/T	F/Y	F/Y	F/T	F/T
+4 MAURITIUS dep				1900																								1725
+2 BLANTYRE dep				x			530												530									1430
+2 LUSAKA dep		1615																										
+2 NDOLA dep												1630																
+3 DAR ES SALAAM arr	FROM	1930	2050		FROM	1830	1915		FROM	FROM	FROM	1925	FROM	FROM	FROM	FROM	FROM	FROM	FROM	FROM	FROM	FROM	FROM	FROM	FROM	FROM	FROM	FROM
+3 DAR ES SALAAM dep	JNB	x	x		JNB	x	x		JNB	JNB	JNB	LUN	JNB	1015	LUN	2030	JNB	1830	1915		JNB	JNB	JNB	JNB	JNB	JNB	JNB	JNB
+3 MOMBASA arr														1105														
+3 MOMBASA dep														1150														
+3 NAIROBI arr		2230	2155			2030						2200		1245		2140				2030								2140
+3 NAIROBI dep	0010	2300	2345		0010	2300	2345		0010	2140		2300	0010	1345		2300	0010	1100		2300	0010	1455		2345	0010	1200		2300
+3 ENTEBBE arr						0001						0001																
+3 ENTEBBE dep						0015	0100			1530		0100		1615														
+2 KHARTOUM arr																												MON 0120
+2 KHARTOUM dep																												MON 0200
+3 CAIRO arr														1845														MON 0355
+2 TRIPOLI arr																												MON 0420
+2 ATHENS arr												0535																x*
+2 ATHENS dep												0620																x*
+2 ROME arr														0600														0630
+2 ROME dep														0645														0715
+1 ZURICH arr																												x*
+1 ZURICH dep																												0630
+1 FRANKFURT arr																												0630
+1 FRANKFURT dep																												0645
+1 PARIS arr																												x
+1 PARIS dep																												x
+1 LONDON arr		0830	0735	0735		0805	0640	0605		0805	2140	0605		0900		0800		2225	0800	0735		0800	1855			0830	0655	0740

NOTES: 1. (A) No local traffic may be carried Rome-London on BA124 Thursdays.  
 2. (B) No local traffic may be carried Nairobi-Rome on BA124 Fridays, BA128 Saturdays, BA112 Saturdays.  
 3. (C) Only BOAC-BUA International Stop-Over Traffic may be carried over these sectors.  
 4. EC710 Thursdays operates with effect from 30th May, 1968 (subject to confirmation).  
 5. Times at Cairo to read one hour earlier until 30th April, 1968 and after 30th September, 1968.  
 6. Times at Rome to read one hour earlier until 26th May, 1968 and after 21st September, 1968.  
 7. \* Meal served to disembarking passengers only.  
 8. All British United Airways services operate to London Airport, Gatwick.

The shaded columns indicate EAA SVC10 & Comet 4 Services.



## BARCLAYS BANK D.C.O.

provide a first class service for all travellers.



EAST AFRICAN AIRWAYS (PARTNERSHIP SERVICES)

TABLE 19		EUROPE TO AFRICA SERVICES																																		
		MONDAY			TUESDAY			WEDNESDAY			THURSDAY			FRIDAY			SATURDAY			SUNDAY			MONDAY													
DAY	AIRCRAFT	VC10	V10	V10	COM	V10	VC10	V10	V10	VC10	VC10	V10	V10	COM	VC10	VC10	V10	V10	VC10	VC10	COM	VC10	VC10	V10	V10	VC10	VC10	COM	VC10	VC10	V10	V10	VC10	VC10		
SERVICE	EC	BA	BA	EC	BA	EC	BA	BA	EC	BR	EC	BA	BA	EC	EC	BA	BA	BR	BA	EC	BA	EC	BA	BA	BR	EC	EC	BA	BA	BR	EC	EC	BA	BA		
FLIGHT No.	715	123	145	899	107	713	115	143	753	211	715	117	165	853	721	121	163	103	129	899	113	711	119	161	735	755	895	719	127	141	101	729	897	717	125	167
GMT CLASS	F/Y	F/Y	F/Y	F/T	F/Y	F/Y	F/Y	F/Y	F/T	Y	F/Y	F/Y	F/Y	F/T	F/Y	F/Y	F/Y	Y	F/Y	F/T	F/Y	F/Y	F/Y	F/T	F/T	F/T	F/T	F/T	F/T	F/T	F/T	F/T	F/T	F/T	F/T	
+1 LONDON	dep	2000	2045	2145		1515	2000	2045	2145		1850	2000	2045	2145		2000	2045	2145	2220	2359		1515	2000	2045	2145		2000	2045	2145	2320		2000	2045	2145		
+1 PARIS	arr	x	x	x		x	x	x		x	x	x	x		x	x	x	x				x	x	x	(B)						x	x	x			
+1 FRANKFURT	arr																																			
+1 ZURICH	arr					1640																														
+2 ROME	arr	2315	0001			2315																														
+2 ATHENS	arr	2359	0045			2359																														
+3 CAIRO	arr																																			
+2 TRIPOLI	arr																																			
+2 KHARTOUM	arr																																			
+3 ENTEBBE	arr																																			
+3 NAIROBI	arr	0810	x	x																																
+3 DAR ES SALAAM	arr	0910	0825	0930																																
+2 NDOLA	arr																																			
+2 LUSAKA	arr																																			
+2 BLANTYRE	arr																																			
+4 MAURITIUS	arr																																			

NOTES: 1. (A) No local traffic may be carried Rome-Nairobi on BA123 Mondays, BA119 Fridays, BA127 Saturdays.  
 2. (B) No local traffic may be carried London-Rome on BA161 Fridays.  
 3. (C) Only BOAC-BUA International Stop-Over Traffic may be carried over these sectors.  
 4. EC711 Fridays will operate with effect from 31st May, 1968 (subject to confirmation).  
 5. Times at Cairo to read one hour earlier until 30th April, 1968 and after 30th September, 1968.  
 6. Times at Rome to read one hour earlier until 28th May, 1968 and after 31st September, 1968.  
 7. All British United Airways services operate from London Airport, Gatwick.

The shaded columns indicate EAA SVC10 & Comet 4 services.

**EAST AFRICAN AIRWAYS Super VC10**  
 DEPARTS FROM LONDON AT 8 P.M. EVERY NIGHT



TABLE 20

**EAST AFRICA/ZAMBIA/MALAWI (PARTNERSHIP SERVICES)**

DAY	MONDAY					TUESDAY				WEDNESDAY				THURSDAY			FRIDAY			SATURDAY					SUNDAY										
AIRCRAFT	F27 S S S VC 10 VC 10 VC 10 DC3 BAC					F27 S VC 10 COM BAC				F27 DC3 S S VC 10 VC 10				F27 F27 BAC			F27 F27 COM			S S S VC 10 VC 10 VC 10 COM					DC3 COM F27 BAC										
+	SERVICE					SERVICE				SERVICE				SERVICE			SERVICE			SERVICE					SERVICE										
-	FLIGHT No.					FLIGHT No.				FLIGHT No.				FLIGHT No.			FLIGHT No.			FLIGHT No.					FLIGHT No.										
GMT	CLASS					CLASS				CLASS				CLASS			CLASS			CLASS					CLASS										
+3 ENTEBBE	dep	0830					0810					0700				1530				0745				0830					0700					1100	
+3 NAIROBI	arr	0930					0910					0905				1700				0915				0930					0905					1230	
+3 MOMBASA	arr		1045					1045					1045											1020										1500	
+3 DAR ES SALAAM	arr	0950					0950					0950				1635				0950				0950											
+2 NDOLA	arr																																		1630
+2 LUSAKA	arr																																		1720
+2 BLANTYRE	arr																																		1755

NOTE: 1. No Local Traffic may be carried Nairobi - Dar es Salaam on QZ 513 Thursdays.

TABLE 21

**MALAWI/ZAMBIA/EAST AFRICA (PARTNERSHIP SERVICES)**

DAY	MONDAY			TUESDAY				WEDNESDAY			THURSDAY	FRIDAY	SATURDAY				SUNDAY																		
AIRCRAFT	BAC S S VC 10 VC 10			BAC DC3 COM F27 S VC 10				S VC 10 VC 10			BAC	COM F27	COM S S S VC 10 VC 10 VC 10				BAC S VC 10 COM																		
+	SERVICE			SERVICE				SERVICE			SERVICE	SERVICE	SERVICE				SERVICE																		
-	FLIGHT No.			FLIGHT No.				FLIGHT No.			FLIGHT No.	FLIGHT No.	FLIGHT No.				FLIGHT No.																		
GMT	CLASS			CLASS				CLASS			CLASS	CLASS	CLASS				CLASS																		
+2 BLANTYRE	dep						1530					1530																					1430		
+2 LUSAKA	dep	0830	1615				0800					1300				1545								0830											
+2 NDOLA	arr	0905	0945				0835					1335				1415								0905										0945	
+3 DAR ES SALAAM	arr	1245	1930				1830					1715				1830								1900											
+3 MOMBASA	arr						1915					1745				1915								1950											
+3 NAIROBI	arr						2030					2200				2030								2300											1820
+3 ENTEBBE	arr						1605					0001				0001								0001										1940	

NOTE: 1. No Local Traffic may be carried Dar es Salaam - Nairobi on QZ 510 Thursdays.

**TABLE 22**

**ARUSHA SERVICES (TANZANIA/KENYA/UGANDA)**

DAY	MONDAY	TUESDAY	WEDNESDAY	THURSDAY	FRIDAY	SATURDAY	SUNDAY
AIRCRAFT	DC3 COM	F27 DC3	DC3 COM	F27 COM	DC3 DC3	DC3 F27	F27
SERVICE	EC EC	EC EC	EC EC	EC EC	EC EC	EC EC	EC
FLIGHT No.	036 816	332 011	036 816	328 843	030 063	036 363	320
CLASS	T F/T	T T	T F/T	T F/T	T T	T T	T
DAR ES SALAAM	dep 0645	0730	0645	0730	0745	0645	0730
ZANZIBAR	arr	0750		0750			
TANGA	arr	0810		0810			0815
MOMBASA	arr	0840		0840			0835
	dep	0900		0900			0905
	dep	0930			0905		0935
	dep	1000			0920		
ARUSHA	arr 0845	VIA MSI 1135	0845	1005	VIA MSI 1120	0845	1045
	dep 0900	1155	0900	1025	1135 1200	0900	1105
NAIROBI	arr 1000	1240	1000	1110	VIA 1235 MWZ & MUS	1000	1150
ENTEBBE	dep 1100	1400	1100	1245	1605	1030	1230
	arr 1200	1605	1200	1345		1200	1400

**TABLE 23**

**ARUSHA SERVICES (UGANDA/KENYA/TANZANIA)**

DAY	MONDAY	TUESDAY	WEDNESDAY	THURSDAY	FRIDAY	SATURDAY	SUNDAY
AIRCRAFT	S VC10 DC3	S VC10 F27	DC3 DC3	S VC10 DC3	F27 DC3 DC3	F27 DC3	F27 DC3
SERVICE	EC EC	EC EC	EC EC	EC EC	EC EC EC	EC EC	EC EC
FLIGHT No.	732 029	715 329	012 029	715 031	316 063 027	318 035	318 005
CLASS	F/T T	F/T T	T T	F/T T	T T T	T T	T T
ENTEBBE	dep 0830	0810	0700	0810	0745	1100	1100
NAIROBI	arr 0930	0910	0905	0910	0915	1230	1230
ARUSHA	arr 1030	1015	1030	1015	1045 1400	1400	1345
	arr 1130	1100	1130	1115	1145 1500	1500	1445
	arr 1145	1120	1145	1130	1515	1515	1500
MOMBASA	arr	1230		1300	1645	VIA MSI 1715	
	arr	1300		1315	1700	1730	
TANGA	arr	1310	1310				
	arr	1325	1325				
DAR ES SALAAM	arr 1425	1405	1425	1435	1820	1850	1700

**TABLE 24**

**INTER-CITY SERVICES – QUICK REFERENCE**

DAY	MONDAY	TUESDAY	WEDNESDAY	THURSDAY	FRIDAY	SATURDAY	SUNDAY
AIRCRAFT	COM DC3	COM/F27 F27/DC3 F27/SVC10	DC3 COM SVC10	F27/COM COM/F27	DC3 COM/F27 F27	DC3/F27 SVC10	F27 F27/SVC10
SERVICE	EC EC	*EC *EC *EC	EC EC EC	*EC *EC	*EC *EC *EC	*EC EC	EC *EC
FLIGHT No.	816 040	804/363 332/011 330/716	044 816 720	328/843 854/371	085/064 804/313 302/373	036/363 736/716	320 302/732
CLASS	F/T T	F/T T F/T	T F/T F/T	F/T F/T	T F/T T	T F/T T	T F/T
DAR ES SALAAM	dep 0700 0930	0700 0730 1900	0700 0700 2050	0730 1015	0630 0700 1400	0645 1950	0730 1400
NAIROBI	arr 0930	0930 1240 2155	0930 2200	1110 1245	1320 0930 1750	1000 2100	1150 1750
	dep 1100	1030 1400	1100 2300	1245 1800	1400 1900	1030 2300	1230 1840
ENTEBBE	arr 1200 1520	1200 1605	WED THU 0001 1335 1200 0001	1345 1930	1605 1130 2030	1200 SUN 0001	1400 1940

\*Connecting Services via Intermediate Points.

**TABLE 25**

**INTER-CITY SERVICES – QUICK REFERENCE**

DAY	MONDAY	TUESDAY	WEDNESDAY	THURSDAY	FRIDAY	SATURDAY	SUNDAY
AIRCRAFT	SVC10 DC3/F27 COM	DC3 SVC10/COM DC3 F27/COM	DC3/F27 COM	SVC10/DC3 DC3 F27	F27/COM DH6/F27 COM	SVC10 F27 DH6/F17	F27/DC3 F27
SERVICE	EC *EC EC	*EC EC EC	*EC EC	*EC EC *EC	EC *EC EC	EC *EC *EC	*EC EC
FLIGHT No.	732/717 016/309 817	064/082 719/899 037 364/805	012/325 817	715/031 039 314/327	316/899 266/355 844	711/735 318/321 266/327	318/005 319
CLASS	F/T T F/T	T F/T T F/T	T F/T	F/T T T	F/T T F/T	F/T T T	T T
ENTEBBE	dep 0830 1000 1500	0745 VIA MUS TO MWZ FROM 0910 2115 0905 1600 0910 1700 0915 1710 1930 0930 1230 1710 1230 1615	0700 1500	0810 1000 1530	0745 1400 1830	0830 1100 1400	1100 1445
NAIROBI	arr 0930 1310 1600	1045 2230	1015 1645	1930	1045 1830 2030	1020 1330 1930	1345 1700
DAR ES SALAAM	arr 1155 1850 1915	1705 VIA TBO MBI IRI 1200 1645 2345	1310 1915	1435 1540 2225	1200 2125 2145	1130 1805 2225	1700 2025

\*Connecting Services via Intermediate Points.

FARES AND RATES GUIDE

MONDAY						TUESDAY						WEDNESDAY						THURSDAY						FRIDAY																																																																																																																																																																																																							
From	Class	Validity	Single	Return	Cargo Per Kilo under 45 Kgs.	Cargo Per Kilo 45 Kgs. and over	From	Class	Validity	Single	Return	Cargo Per Kilo under 45 Kgs.	Cargo Per Kilo 45 Kgs. and over	From	Class	Validity	Single	Return	Cargo Per Kilo under 45 Kgs.	Cargo Per Kilo 45 Kgs. and over	From	Class	Validity	Single	Return	Cargo Per Kilo under 45 Kgs.	Cargo Per Kilo 45 Kgs. and over	From	Class	Validity	Single	Return	Cargo Per Kilo under 45 Kgs.	Cargo Per Kilo 45 Kgs. and over																																																																																																																																																																																													
Accra	F	12 Months	Cedi	Cedi	Cedi	Cedi	Athens	F	12 Months	G. Dra.	G. Dra.	G. Dra.	G. Dra.	Bujumbura	F	12 Months	US \$	US \$	US \$	US \$	Dar es Salaam	F	12 Months	150.00	285.00	—	—	Dar es Salaam	F	12 Months	135.30	257.10	—	—	Entebbe	F	12 Months	397.30	754.80	—	—	Entebbe	F	12 Months	48.30	91.70	—	—	Kigali	F	12 Months	283.00	537.70	—	—	Kigali	F	12 Months	16.10	30.60	—	—	Nairobi	F	12 Months	417.20	792.80	—	—	Nairobi	F	12 Months	548.50	1049.00	—	—	Nairobi	F	10/30 Days	288.70	540.10	—	—	Nairobi	F	10/30 Days	404.10	768.20	—	—																																																																																																																																					
Addis Ababa	F	12 Months	Ethiop. \$	Ethiop. \$	Ethiop. \$	Ethiop. \$	Mauritius	F	12 Months	18231	34640	—	—	Cairo	F	12 Months	Egypt. £	Egypt. £	Egypt. £	Egypt. £	Blantyre	F	12 Months	202.450	384.600	—	—	Bombay	F	12 Months	534	1015	—	—	Dar es Salaam	F	12 Months	478	908	—	—	Dar es Salaam	F	12 Months	674	1280	—	—	Dar es Salaam	F	3 days/1 Mth.	—	478	—	—	Dar es Salaam	F	12 Months	429	815	—	—	Entebbe	F	12 Months	340	646	—	—	Entebbe	F	3 days/1 Mth.	—	426	—	—	Karachi	F	12 Months	732	1390	—	—	Karachi	F	12 Months	502	953	—	—	Lusaka	F	12 Months	674	1280	—	—	Lusaka	F	12 Months	533	1012	—	—	Nairobi	F	12 Months	309	588	1.32	0.99	Nairobi	F	12 Months	232	440	—	—	Nairobi	F	3 days/1 Mth.	—	289	—	—	Ndola	F	12 Months	632	1200	—	—	Ndola	F	12 Months	500	950	—	—																																																																																				
Aden	F	12 Months	Dinars	Dinars	Dinars	Dinars	Blantyre	F	12 Months	£ s. d.	£ s. d.	s. d.	s. d.	Bombay	F	12 Months	138	263	17	—	Bombay	F	12 Months	196	372	10	—	Bombay	F	12 Months	135	257	4	—	Bombay	F	12 Months	192	365	17	—	Bombay	F	12 Months	131	250	11	—	Dar es Salaam	F	6 Months	34	65	6	4	Dar es Salaam	F	6 Months	28	54	7	—	Frankfurt	F	12 Months	273	518	16	—	Karachi	F	12 Months	157	297	7	—	Karachi	F	12 Months	186	354	15	—	Karachi	F	12 Months	129	246	3	—	Karachi	F	12 Months	274	521	0	—	Karachi	F	12 Months	157	299	7	—	Mafia	F	12 Months	45	86	0	—	Mafia	F	12 Months	45	86	0	—	Mafia	F	12 Months	45	86	0	—	Mafia	F	12 Months	45	86	0	—	Mombasa	F	6 Months	47	89	14	4	Mombasa	F	6 Months	41	78	16	4	Mombasa	F	6 Months	59	113	17	6	Mombasa	F	6 Months	50	95	8	—	Nairobi	F	14/30 Days	—	75	6	—	Paris	F	12 Months	271	516	11	—	Paris	F	12 Months	156	297	2	—	Rome	F	12 Months	252	478	18	—	Rome	F	12 Months	150	286	1	—	Rome	F	12 Months	252	478	18	—	Rome	F	12 Months	150	286	1	—	Zanzibar	F	12 Months	31	60	11	—	Zanzibar	F	12 Months	—	40	6	—
Arusha	T	6 Months	Shs.	Shs.	Sh. Ct.	Sh. Ct.	Bombay	F	12 Months	Ind. Rs.	Ind. Rs.	Ind. Rs.	Ind. Rs.	Accra	F	12 Months	Shs.	Shs.	Sh. Ct.	Sh. Ct.	Addis Ababa	F	12 Months	1365	2593	—	—	Addis Ababa	F	12 Months	1092	2074	—	—	Addis Ababa	F	6 days/1 Mth.	—	1366	—	—	Aden	F	12 Months	1481	2814	7 50	5 70	Arusha	F	12 Months	1156	2197	—	—	Arusha	F	6 Months	330	594	2 70	2 10	Kampala	F	6 Months	430	774	3 50	2 70	Kampala	F	6 Months	290	522	2 10	1 60	Kampala	F	6 Months	290	522	2 10	1 60	Mombasa	F	6 Months	220	396	1 80	1 40	Mombasa	F	6 Months	220	396	1 80	1 40	Mombasa	F	6 Months	220	396	1 80	1 40	Mombasa	F	6 Months	220	396	1 80	1 40	Moshi	F	6 Months	55	99	0 50	0 40	Musoma	F	6 Months	330	594	2 70	2 10	Mwanza	F	6 Months	280	504	2 00	1 50	Nairobi	F	6 Months	150	270	1 15	0 90	Nairobi	F	6 Months	150	270	1 15	0 90	Pemba	F	6 Months	315	567	2 30	1 80	Tanga	F	6 Months	230	414	1 80	1 40	Tanga	F	6 Months	230	414	1 80	1 40	Zanzibar	F	6 Months	315	567	2 30	1 80	Zanzibar	F	6 Months	315	567	2 30	1 80																																										

F First Class  
T Tourist Class  
Y Economy Class  
B/E Business Excursion  
+ Limited stopover facilities. Details on application.  
● Bank and Public Holiday Excursion. Details on application.  
± Stopovers on route not permitted.  
● Excursion Fare. Details on application.

All Special and Business Excursion Fares between points in East Africa are saleable only within East Africa.

## FARES AND RATES GUIDE

From				Class	Validity	Single		Return		Cargo Per Kilo under 45 Kgs.		Cargo Per Kilo 45 Kgs. and over		From				Class	Validity	Single		Return		Cargo Per Kilo under 45 Kgs.		Cargo Per Kilo 45 Kgs. and over										
From	To	Shs.	Sh. Ct.			Sh. Ct.	Sh. Ct.	Sh. Ct.	Sh. Ct.	Sh. Ct.	Sh. Ct.	Sh. Ct.	Sh. Ct.	Sh. Ct.	From	To	Shs.			Sh. Ct.	Sh. Ct.	Sh. Ct.	Sh. Ct.	Sh. Ct.	Sh. Ct.	Sh. Ct.	Sh. Ct.	Sh. Ct.	Sh. Ct.	Sh. Ct.						
<b>Dar es Salaam</b>														<b>Dodoma</b>				<b>Frankfurt</b>																		
<i>Continued</i>														to				to																		
Frankfurt	F	12 Months	4681	8894										Dar es Salaam	T	6 Months	260	468	2 00	1 50									Biantsyre	F	12 Months	G. Marks	G. Marks			
	Y	12 Months	2681	5094										Iringa	T	6 Months	450	810	3 70	2 80																
Iringa	T	6 Months	260	468	2 00	1 50								Mbeya	T	6 Months	620	1116	5 00	3 80										Dar es Salaam	F	12 Months	2622	4981		
Kampala	F	6 Months	920	1656										Nairobi	T	6 Months	340	612	2 50	1 90																
	T	6 Months	760	1358	6 40	4 80								Tabora	T	6 Months	560	1008	4 60	3 50																
	T	B/E 6 Days		886																																
	T	12/30 Days		906																																
	T	Spec. Exc.		628																																
Karachi	F	12 Months	2621	4980																																
	Y	12 Months	1741	3308																																
Kilwa	T	6 Months	150	270	1 10	0 90																														
Lagos	F	12 Months	2921	5550																																
	T	12 Months	2021	3840																																
Lindi	T	6 Months	220	396	1 80	1 40																														
	T	B/E 6 Days		330																																
	T	12/30 Days		220																																
	T	Spec. Exc.		220																																
London	F	12 Months	4701	8932																																
	Y	12 Months	2681	5094	15 10	11 40																														
Lusaka	F	19/45 Days	4322	8165																																
	T	6 Months	845	1605																																
	T	6 Months	725	1377																																
	T	13/45 Days		891																																
	T	6 Months	100	180	0 75	0 60																														
	T	6 Months	285	513	2 10	1 60																														
	T	B/E 6 Days		330																																
	T	12/30 Days		380																																
	T	Spec. Exc.		247																																
Mauritius	F	12 Months	1401	2662																																
	Y	12 Months	1021	1940																																
	Y	1 Month	1281	2460																																
	F	6 Months	390	702	3 20	2 40																														
	F	6 Months	260	468																																
	T	6 Months	215	387	1 65	1 30																														
	T	B/E 6 Days		248																																
	T	12/30 Days		287																																
	T	Spec. Exc.		172																																
Moshi	T	6 Months	320	576	2 30	1 80																														
	T	B/E 6 Days		370																																
	T	Spec. Exc.		300																																
Mtwara	T	6 Months	260	468	2 00	1 50																														
	T	B/E 6 Days		390																																
	T	Spec. Exc.		260																																
Musoma	T	6 Months	650	1170	5 55	4 30																														
	T	6 Months	600	1080	4 90	3 70																														
	T	B/E 6 Days		630																																
	T	12/30 Days		800																																
	T	Spec. Exc.		660																																
Nachingwea	T	6 Months	260	468	1 90	1 50																														
	F	6 Months	520	936																																
	T	6 Months	430	774	3 65	2 80																														
	T	B/E 6 Days		495																																
	T	12/30 Days		490																																
	T	Spec. Exc.		344																																
(Central Route)	F	6 Months	800	1440																																
Ndola	F	6 Months	721	1370																																
	T	6 Months	601	1142	4 00	3 00																														
	T	13/45 Days		751																																
	T	6 Months	350	630	2 90	2 20																														
Njombe	F	12 Months	4661	8856																																
	T	6 Months	2661	5056																																
	T	6 Months	125	225</																																

## FARES AND RATES GUIDE

From	Class	Validity	Single	Return	Cargo Per Kilo under 45 Kgs.	Cargo Per Kilo 45 Kgs. and over	From	Class	Validity	Single	Return	Cargo Per Kilo under 45 Kgs.	Cargo Per Kilo 45 Kgs. and over	From	Class	Validity	Single	Return	Cargo Per Kilo under 45 Kgs.	Cargo Per Kilo 45 Kgs. and over		
Karachi	F	12 Months	Pak. Rs. 1394	Pak. Rs. 2648	Pak. Rs.	Pak. Rs.	Lagos	F	12 Months	£ s. 146	£ s. 277	s. d.	s. d.	London	F	12 Months	£ s. 264	£ s. 503	s. d.	s. d.		
Addis Ababa	F	12 Months	955	1815	—	—	Dar es Salaam	T	12 Months	101	192	0	—	Continued	F	12 Months	264	503	29	4		
Aden	F	12 Months	987	1876	—	—	Entebbe	F	12 Months	132	250	18	—	Tabora	F	12 Months	151	288	5	—		
Blantyre	F	12 Months	651	1237	3.85	2.90	Nairobi	F	12 Months	94	178	14	—	Tanga	F	12 Months	273	518	16	30	7	
Bombay	F	12 Months	2134	4055	—	—	Dar es Salaam	T	10/30 Days	139	131	13	—	Zanzibar	F	12 Months	155	294	18	—		
Dar es Salaam	F	12 Months	1481	2814	—	—	Lindi	F	12 Months	139	1284	4	—	Lusaka	F	12 Months	274	521	0	30	9	
Entebbe	F	12 Months	246	467	—	—	Athens	F	12 Months	96	182	10	—	Addis Ababa	F	12 Months	156	297	2	—		
Lusaka	F	12 Months	190	360	1.60	1.20	Cairo	F	12 Months	380	7222	—	—	Athens	F	12 Months	192	365	50	—		
Mauritius	F	12 Months	1747	3320	—	—	Dar es Salaam	T	B/E 6 Days	—	330	—	—	Bombay	F	12 Months	152	289	20	—		
Nairobi	F	12 Months	1121	2130	—	—	London	F	12 Months	4801	9122	—	—	Malindi	F	12 Months	386	733	60	—		
Ndola	F	12 Months	1161	2206	—	—	Mombasa	F	12 Months	2721	5170	15	80	—	Nairobi	F	12 Months	234	444	80	—	
Kasese	T	6 Months	Shs. 170	Shs. 306	Sh. Ct. 1.20	Sh. Ct. 0.90	Nairobi	F	12 Months	4621	9160	—	—	Dar es Salaam	F	12 Months	338	642	40	—		
Entebbe	T	6 Days	—	230	—	—	Paris	F	12 Months	220	396	1	40	Entebbe	F	12 Months	240	456	20	—		
Jinja	T	6 Days	230	414	1.70	1.30	Frankfurt	F	12 Months	380	684	3	20	Cairo	F	12 Months	324	615	80	—		
Kampala	T	6 Days	—	347	—	—	London	F	12 Months	4801	9122	—	—	Dar es Salaam	F	6 Months	222	422	00	—		
Kisumu	T	6 Months	190	342	1.40	1.10	London	F	12 Months	2721	5170	15	80	Entebbe	F	6 Months	84	160	50	—		
Malindi	T	6 Months	—	266	—	—	Mombasa	T	19/45 Days	—	461	—	—	Entebbe	T	6 Months	72	137	70	—		
Mombasa	T	6 Months	300	540	2.50	1.90	Nairobi	F	6 Months	2721	5170	15	80	Frankfurt	F	12 Months	130	247	20	—		
Nairobi	T	12/30 Days	—	820	—	—	Nairobi	F	6 Months	2721	5170	15	80	Frankfurt	F	12 Months	110	209	20	—		
Murchison Falls	T	6 Months	190	342	1.35	1.10	Paris	F	6 Months	4801	9122	—	—	Karachi	F	12 Months	462	878	00	—		
Nairobi	T	6 Months	445	801	3.70	2.80	Paris	F	6 Months	4801	9122	—	—	Karachi	F	12 Months	268	509	40	—		
Kigali	T	12 Months	US \$ 16	US \$ 30	60	—	London	T	12 Months	2721	5170	15	80	London	F	12 Months	230	437	20	—		
Bujumbura	T	12 Months	48	90	70	—	Mombasa	T	19/45 Days	—	461	—	—	London	F	12 Months	464	881	80	—		
Entebbe	T	12 Months	75	142	60	—	Nairobi	T	19/45 Days	—	461	—	—	London	F	12 Months	268	509	40	—		
Nairobi	T	12 Months	—	—	—	—	Paris	T	19/45 Days	—	461	—	—	Mafia	F	12 Months	102	197	50	—		
Kilwa	T	6 Months	Shs. 150	Shs. 270	Sh. Ct. 1.10	Sh. Ct. 0.90	Zanzibar	T	19/45 Days	—	461	—	—	Malindi	T	12/30 Days	106	200	30	—		
Dar es Salaam	T	6 Months	80	144	0.50	0.40	London	T	12 Months	—	—	—	—	Mombasa	T	6 Months	94	179	50	—		
Mafia	T	6 Months	—	270	—	—	Athens	F	12 Months	86	165	3	10	Nairobi	F	6 Months	104	197	80	—		
Kisumu	F	12 Months	3121	5930	—	—	Blantyre	F	12 Months	274	4	521	0	—	Paris	F	12 Months	86	163	60	56	
Athens	F	12 Months	1901	3612	—	—	Cairo	F	12 Months	157	11	299	7	—	Paris	F	12 Months	460	874	20	—	
Entebbe	F	12 Months	1641	3118	9.80	7.40	Dar es Salaam	F	12 Months	129	11	246	3	13	Rome	F	12 Months	424	805	80	—	
Frankfurt	F	12 Months	170	306	1.35	1.10	Entebbe	F	12 Months	87	11	166	7	—	Rome	F	12 Months	424	805	80	—	
Jinja	F	12 Months	4341	8248	—	—	Entebbe	F	12 Months	247	7	470	0	28	Zanzibar	F	12 Months	256	486	60	96	
Kampala	F	12 Months	2521	4790	—	—	Frankfurt	F	12 Months	26	4	49	16	3	—	Zanzibar	F	12 Months	135	243	0	95
Kasese	F	12 Months	—	—	—	—	Kisumu	F	12 Months	254	7	483	6	28	11	Mafia	T	6 Months	Shs. 100	Shs. 180	Sh. Ct. 0.75	Sh. Ct. 0.60
London	F	12 Months	4361	8286	—	—	Lindi	F	12 Months	19	17	37	15	—	Dar es Salaam	T	6 Months	80	144	0	50	
Malindi	F	12 Months	2521	4790	14	10	Lusaka	F	12 Months	147	1	279	8	—	Kilwa	T	6 Months	305	549	2	20	
Mombasa	F	12 Months	—	—	—	—	Mauritius	F	12 Months	158	14	301	11	—	Mombasa	T	6 Months	500	900	4	20	
Nairobi	F	12 Months	—	—	—	—	Mombasa	F	12 Months	268	7	509	18	30	Nairobi	T	6 Months	215	387	1	55	
Mwanza	F	12 Months	—	—	—	—	Nairobi	F	12 Months	268	7	509	18	30	Pemba	T	6 Months	215	387	1	55	
Nairobi	T	B/E 6 Days	—	455	—	—	Nairobi	F	12 Months	268	7	509	18	30	Tanga	T	6 Months	215	387	1	55	
Nairobi	T	B/E 6 Days	—	460	—	—	Nairobi	F	12 Months	268	7	509	18	30	Zanzibar	T	6 Months	135	243	0	95	
Nairobi	T	6 Months	—	558	—	—	Paris	F	12 Months	257	17	489	19	29	4	Malindi	T	6 Months	Shs. 290	Shs. 522	Sh. Ct. 2.10	Sh. Ct. 1.60
Nairobi	T	B/E 6 Days	—	415	—	—	Paris	F	12 Months	257	17	489	19	29	4	Arusha	T	6 Months	—	—	—	—
Nairobi	T	6 Months	—	200	—	—	Paris	F	12 Months	257	17	489	19	29	4	Blantyre	T	12/30 Days	—	—	—	—
Paris	F	12 Months	4321	8210	—	—	Paris	F	12 Months	257	17	489	19	29	4	Dar es Salaam	T	6 Months	285	513	2	10
Paris	F	12 Months	2501	4752	—	—	Roine	F	12 Months	155	4	294	18	—	—	Entebbe	T	B/E 6 Days	—	—	—	—
Paris	F	12 Months	3921	7450	—	—	Roine	F	12 Months	155	4	294	18	—	—	Entebbe	T	12/30 Days	—	—	—	—
Rome	F	12 Months	2301	4372	12	30	Roine	F	12 Months	155	4	294	18	—	—	Entebbe	T	6 Months	—	—	—	—
Rome	F	12 Months	—	—	—	—	Roine	F	12 Months	155	4	294	18	—	—	Entebbe	T	6 Months	—	—	—	—
Rome	F	12 Months	—	—	—	—	Roine	F	12 Months	155	4	294	18	—	—	Entebbe	T	6 Months	—	—	—	—
Rome	F	12 Months	—	—	—	—	Roine	F	12 Months	155	4	294	18	—	—	Entebbe	T	6 Months	—	—	—	—
Rome	F	12 Months	—	—	—	—	Roine	F	12 Months	155	4	294	18	—	—	Entebbe	T	6 Months	—	—	—	—
Rome	F	12 Months	—	—	—	—	Roine	F	12 Months	155	4	294	18	—	—	Entebbe	T	6 Months	—	—	—	—
Rome	F	12 Months	—	—	—	—	Roine	F	12 Months	155	4	294	18	—	—	Entebbe	T	6 Months	—	—	—	—
Rome	F	12 Months	—	—	—	—	Roine	F	12 Months	155	4	294	18	—	—	Entebbe	T	6 Months	—	—	—	—
Rome	F	12 Months	—	—	—	—	Roine	F	12 Months	155	4	294	18	—	—	Entebbe	T	6 Months	—	—	—	—
Rome	F	12 Months	—	—	—	—	Roine	F	12 Months	155	4	294	18	—	—	Entebbe	T	6 Months	—	—	—	—
Rome	F	12 Months	—	—	—	—	Roine	F	12 Months	155	4	294	18	—	—	Entebbe	T	6 Months	—	—	—	—
Rome	F	12 Months	—	—	—	—	Roine	F	12 Months	155	4	294	18	—	—	Entebbe	T	6 Months	—	—	—	—
Rome	F	12 Months	—	—	—	—	Roine	F	12 Months	155	4	294	18	—	—	Entebbe	T	6 Months	—	—	—	—
Rome	F	12 Months	—	—	—	—	Roine	F	12 Months	155	4	294	18	—	—	Entebbe	T	6 Months	—	—	—	—
Rome	F	12 Months	—	—	—	—	Roine	F	12 Months	155	4	294	18	—	—	Entebbe	T	6 Months	—	—	—	—
Rome	F	12 Months	—	—	—	—	Roine	F	12 Months	155	4	294	18	—	—	Entebbe	T	6 Months	—	—	—	—

F First Class  
T Tourist ClassEconomy Class  
B/E Business Excursion  
† Limited stopover facilities. Details on application

All Special and Business Excursion Fares between points in East Africa are saleable only within East Africa.

\* Bank and Public Holiday Excursion. Details on application.  
† Stopovers en route not permitted.  
● Excursion Fare. Details on application.

FARES AND RATES GUIDE

From	Class	Validity	Single	Return	Cargo Per Kilo under 45 Kgs.	Cargo Per Kilo 45 Kgs. and over	From	Class	Validity	Single	Return	Cargo Per Kilo under 45 Kgs.	Cargo Per Kilo 45 Kgs. and over	From	Class	Validity	Single	Return	Cargo Per Kilo under 45 Kgs.	Cargo Per Kilo 45 Kgs. and over				
<b>Malindi</b>	Continued						<b>Mombasa</b>	Continued						<b>Moshi</b>	Continued									
Moshi	T	6 Months	240	432	1 80	1 40	Dar es Salaam	F	6 Months	260	468			Zanzibar	T	6 Months	270		486	2 00	1 50			
Nairobi	T	6 Months	225	405	2 10	1 60	Entebbe	T	6 Months	215	287			Mtwara	T	6 Months	260		468					
Ndola	T	13/45 Days	1111				Frankfurt	T	12/30 Days	4581	8704			Athens	F	12 Months	3801		7222					
Tanga	T	6 Months	160	288	1 20	0 90	Kampala	T	12/30 Days	2641	5018			Cairo	F	12 Months	2281		4334					
Zanzibar	T	6 Months	240	432	1 80	1 40	Kisumu	T	6 Months	380	684	3 30	2 50	Dar es Salaam	T	6 Months	2181		4144	2 00	1 50			
							London	F	12 Months	4601	8742	14 90	11 20	Frankfurt	T	6 Months	481		9122					
							Lusaka	F	6 Months	1065	2023			Lindi	T	6 Months	50		90	0 40	0 30			
<b>Mauritius</b>	Athens	F	12 Months	3376	6415			Mafa	T	13/45 Days	945	1795			London	F	12 Months	4821		9160				
Bombay	F	12 Months	2490	4730			Malindi	T	6 Months	75	135	0 60	0 50	Mombasa	T	6 Months	2721		5170					
Dar es Salaam	F	12 Months	1090	2070			Moshi	T	6 Months	175	315	1 35	1 10	Nachingwea	T	6 Months	110		198	0 95	0 80			
Entebbe	F	12 Months	1604	3047			Mtwara	T	6 Months	420	756	3 55	2 70	Nairobi	T	6 Months	645		1161	5 45	4 10			
Karachi	F	12 Months	1743	3312			Nairobi	T	6 Months	420	756	3 40	2 60	Paris	F	12 Months	2701		5132	2 90	2 30			
London	F	12 Months	4232	8040			Ndola	F	6 Months	942	1789			Pemba	T	6 Months	340		612					
Nairobi	F	12 Months	2676	5085			Paris	F	12 Months	4561	8666			Rome	F	12 Months	2381		4904					
Paris	F	12 Months	2676	5085			Pemba	T	6 Months	170	306	1 35	1 10	Songea	T	6 Months	300		540	2 40	1 80			
Rome	F	12 Months	3921	7450			Rome	F	12 Months	4161	7906	13 10	9 90	Tanga	T	6 Months	340		612	2 90	2 30			
							Tanga	T	6 Months	95	171	0 75	0 60	Zanzibar	T	6 Months	170		306	1 35	1 10			
<b>Mbeya</b>	Dar es Salaam	T	6 Months	390	702	3 20	2 40																	
Dodoma	T	6 Months	620	1116	5 00	3 80	<b>Moshi</b>	Arusha	T	6 Months	55	99	0 50	0 40	<b>Murchison Falls</b>	Entebbe	T	6 Months	190		342	1 60	1 20	
Entebbe	T	6 Months	580	1044	4 70	3 60	Dar es Salaam	T	6 Months	320	576	2 30	1 80	Kampala	T	6 Months	190		342	1 35	1 10			
Iringa	T	6 Months	200	360	1 40	1 10	Entebbe	T	6 Months	320	576			Kasepe	T	6 Months	190		342	1 35	1 10			
Kampala	T	6 Months	600	1080	4 90	3 70	Kampala	T	6 Months	170	306	1 35	1 10	<b>Musoma</b>	Arusha	T	6 Months	330		594	2 70	2 10		
Mwanza	T	6 Months	420	756	3 40	2 60	Nairobi	T	6 Months	170	306	1 35	1 10	Dar es Salaam	T	6 Months	650		1170	5 55	4 30			
Nairobi	T	6 Months	600	1080	4 90	3 70							Kampala	T	6 Months	280		504	2 00	1 50				
Njombe	T	6 Months	110	198	0 70	0 60							Mwanza	T	6 Months	300		540	2 20	1 70				
Songea	T	6 Months	200	360	1 50	1 20							Nairobi	T	6 Months	110		198	0 80	0 60				
Tabora	T	6 Months	280	504	2 20	1 70																		
<b>Mombasa</b>	Aden	F	12 Months	1221	2320	7 10	5 40	<b>Moshi</b>	Arusha	T	6 Months	320	576	2 30	1 80	<b>Mwanza</b>	Arusha	T	6 Months	280		504	2 00	1 50
Arusha	T	6 Months	220	396	1 80	1 40	Malindi	T	6 Months	240	432	1 80	1 40	Dar es Salaam	T	6 Months	600		1080	4 90	3 70			
Athens	T	6 Months	3401	6462			Mombasa	T	6 Months	175	315	1 35	1 10	Entebbe	T	6 Months	440		800					
Blantyre	F	6 Months	810	1538			Nairobi	T	6 Months	170	306	1 55	1 20	B/E 6 Days	T	6 Months	600		1100					
Cairo	F	12/45 Days	2101	3992			Pemba	T	6 Months	170	306	1 55	1 20	Spec. Exc.	T	6 Months	600		1100					
							Tanga	T	6 Months	195	351	1 45	1 10	Mombasa	T	6 Months	420		756	3 40	2 60			

F First Class  
T Tourist Class  
Y Economy Class

B/E Business Excursion  
† Limited stopover facilities. Details on application.

\* Bank and Public Holiday Excursion. Details on application.  
‡ Stopovers en route not permitted.  
● Excursion Fare. Details on application.

All Special and Business Excursion Fares between points in East Africa are saleable only within East Africa.

BAHAMA AIRWAYS LIMITED  
BRITISH EUROPEAN AIRWAYS  
BRITISH OVERSEAS AIRWAYS CORPORATION

FARES AND RATES GUIDE

From	to	Class	Validity	Single	Return	Cargo Per Kilo under 45 Kgs.		From	to	Class	Validity	Single	Return	Cargo Per Kilo under 45 Kgs.		From	to	Class	Validity	Single	Return	Cargo Per Kilo under 45 Kgs.	
						Sh. Ct.	Kwacha							Sh. Ct.	Kwacha							Sh. Ct.	Kwacha
Nachingwea	Dar es Salaam	T	6 Months	260	380	1 30	2 10	Nairobi	Malindi	T	6 Months	225	405	2 10	1 60	Nairobi	Malindi	T	6 Months	225	405	2 10	1 60
	Lindi	T	6 Months	90	162	0 60	0 50	Mombasa	Mauritius	T	6 Months	1721	3270	4 90	3 70	Mombasa	Mauritius	T	6 Months	1721	3270	4 90	3 70
	Mombasa	T	6 Months	420	756	3 40	2 60	Mombasa	Mauritius	T	6 Months	1261	2396	3 70	3 00	Mombasa	Mauritius	T	6 Months	1261	2396	3 70	3 00
	Mtwara	T	6 Months	110	198	0 95	0 80	Mombasa	Mauritius	T	6 Months	181	336	1 30	1 10	Mombasa	Mauritius	T	6 Months	181	336	1 30	1 10
	Nairobi	T	6 Months	340	612	2 80	2 10	Mombasa	Mauritius	T	6 Months	620	1151	4 90	4 20	Mombasa	Mauritius	T	6 Months	620	1151	4 90	4 20
	Tanga	T	6 Months	340	612	2 80	2 10	Mombasa	Mauritius	T	6 Months	620	1151	4 90	4 20	Mombasa	Mauritius	T	6 Months	620	1151	4 90	4 20
Nairobi	Accra	F	12 Months	2921	5550	3 80	2 90	Mombasa	Mauritius	T	6 Months	225	405	2 10	1 60	Mombasa	Mauritius	T	6 Months	225	405	2 10	1 60
	Addis Ababa	T	12 Months	2021	3840	3 80	2 90	Mombasa	Mauritius	T	6 Months	225	405	2 10	1 60	Mombasa	Mauritius	T	6 Months	225	405	2 10	1 60
	Aden	T	12 Months	881	1668	5 80	4 40	Mombasa	Mauritius	T	6 Months	225	405	2 10	1 60	Mombasa	Mauritius	T	6 Months	225	405	2 10	1 60
	Arusha	T	6 Months	150	270	1 15	0 90	Mombasa	Mauritius	T	6 Months	225	405	2 10	1 60	Mombasa	Mauritius	T	6 Months	225	405	2 10	1 60
	Athens	T	12 Months	3291	6084	4 30	3 20	Mombasa	Mauritius	T	6 Months	225	405	2 10	1 60	Mombasa	Mauritius	T	6 Months	225	405	2 10	1 60
	Blantyre	T	6 Months	1027	1952	1 15	0 90	Mombasa	Mauritius	T	6 Months	225	405	2 10	1 60	Mombasa	Mauritius	T	6 Months	225	405	2 10	1 60
	Bombay	T	6 Months	861	1636	5 60	4 20	Mombasa	Mauritius	T	6 Months	225	405	2 10	1 60	Mombasa	Mauritius	T	6 Months	225	405	2 10	1 60
	Bujumbura	T	12 Months	1618	3074	11 40	8 50	Mombasa	Mauritius	T	6 Months	225	405	2 10	1 60	Mombasa	Mauritius	T	6 Months	225	405	2 10	1 60
	Cairo	T	12 Months	536	1019	10 00	7 50	Mombasa	Mauritius	T	6 Months	225	405	2 10	1 60	Mombasa	Mauritius	T	6 Months	225	405	2 10	1 60
	Dar es Salaam	F	6 Months	1681	3232	3 65	2 80	Mombasa	Mauritius	T	6 Months	225	405	2 10	1 60	Mombasa	Mauritius	T	6 Months	225	405	2 10	1 60
	Dar es Salaam	T	6 Months	520	936	3 65	2 80	Mombasa	Mauritius	T	6 Months	225	405	2 10	1 60	Mombasa	Mauritius	T	6 Months	225	405	2 10	1 60
	Dar es Salaam	T	6 Months	430	774	3 65	2 80	Mombasa	Mauritius	T	6 Months	225	405	2 10	1 60	Mombasa	Mauritius	T	6 Months	225	405	2 10	1 60
(Central Route)	Dodoma	T	6 Months	800	1440	4 60	3 50	Mombasa	Mauritius	T	6 Months	225	405	2 10	1 60	Mombasa	Mauritius	T	6 Months	225	405	2 10	1 60
	Ennebe	T	6 Months	380	694	2 60	2 00	Mombasa	Mauritius	T	6 Months	225	405	2 10	1 60	Mombasa	Mauritius	T	6 Months	225	405	2 10	1 60
	Frankfurt	T	6 Months	460	848	2 60	2 00	Mombasa	Mauritius	T	6 Months	225	405	2 10	1 60	Mombasa	Mauritius	T	6 Months	225	405	2 10	1 60
	Iringa	T	6 Months	600	1080	4 90	3 70	Mombasa	Mauritius	T	6 Months	225	405	2 10	1 60	Mombasa	Mauritius	T	6 Months	225	405	2 10	1 60
	Jimba	T	6 Months	290	522	2 20	1 70	Mombasa	Mauritius	T	6 Months	225	405	2 10	1 60	Mombasa	Mauritius	T	6 Months	225	405	2 10	1 60
	Kampala	T	6 Months	330	594	2 80	2 10	Mombasa	Mauritius	T	6 Months	225	405	2 10	1 60	Mombasa	Mauritius	T	6 Months	225	405	2 10	1 60
Karachi	Kasasa	T	6 Months	2789	5294	9 00	6 70	Mombasa	Mauritius	T	6 Months	225	405	2 10	1 60	Mombasa	Mauritius	T	6 Months	225	405	2 10	1 60
	Kigali	T	6 Months	445	801	3 70	2 80	Mombasa	Mauritius	T	6 Months	225	405	2 10	1 60	Mombasa	Mauritius	T	6 Months	225	405	2 10	1 60
	Kisumu	T	6 Months	536	1019	1 35	1 10	Mombasa	Mauritius	T	6 Months	225	405	2 10	1 60	Mombasa	Mauritius	T	6 Months	225	405	2 10	1 60
	Lagos	T	6 Months	2781	5284	5 15	3 90	Mombasa	Mauritius	T	6 Months	225	405	2 10	1 60	Mombasa	Mauritius	T	6 Months	225	405	2 10	1 60
	Lindi	T	6 Months	605	1089	4 20	3 20	Mombasa	Mauritius	T	6 Months	225	405	2 10	1 60	Mombasa	Mauritius	T	6 Months	225	405	2 10	1 60
	London	T	6 Months	421	782	3 20	2 40	Mombasa	Mauritius	T	6 Months	225	405	2 10	1 60	Mombasa	Mauritius	T	6 Months	225	405	2 10	1 60
	Lusaka	T	6 Months	1041	1978	8 61	6 36	Mombasa	Mauritius	T	6 Months	225	405	2 10	1 60	Mombasa	Mauritius	T	6 Months	225	405	2 10	1 60
	Mafra	T	6 Months	500	900	4 20	3 20	Mombasa	Mauritius	T	6 Months	225	405	2 10	1 60	Mombasa	Mauritius	T	6 Months	225	405	2 10	1 60

Bank and Public Holiday Excursion. Details on application.  
 † Stopovers en route not permitted.  
 ‡ Excursion fare. Details on application.  
 † Limited stopover facilities.  
 ‡ Excursion fare. Details on application.  
 † Economy Class  
 ‡ Excursion fare. Details on application.  
 † First Class  
 ‡ Excursion fare. Details on application.

**FARES AND RATES GUIDE**

From	Class	Validity	Single	Return	Cargo Per Kilo under 45 Kgs.	Cargo Per Kilo 45 Kgs. and over	From	Class	Validity	Single	Return	Cargo Per Kilo under 45 Kgs.	Cargo Per Kilo 45 Kgs. and over	From	Class	Validity	Single	Return	Cargo Per Kilo under 45 Kgs.	Cargo Per Kilo 45 Kgs. and over
<b>Rome</b>							<b>Tanga</b>							<b>Zanzibar</b>						
Continued							Continued							Aden	F	12 Months	Shs. 1441	Shs. 2738	Sh. Ct. 7 40	Sh. Ct. 5 50
Mauritius	F	12 Months	441100	838100	—	—	Arusha	T	6 Months	230	414	1 80	1 40	Arusha	T	6 Months	1111	2112	—	—
Nairobi	F	12 Months	292300	555400	—	—	Athens	F	12 Months	3481	6614	—	—	Athens	F	12 Months	3561	6766	—	—
Paris	F	12 Months	348300	661800	—	—	Cairo	F	12 Months	2141	4068	—	—	Blantyre	Y	12 Months	2181	4144	—	—
	F	12 Months	204900	389200	—	—	Dar es Salaam	Y	12 Months	2781	5284	11 00	8 20	Cairo	F	12 Months	547	1039	4 20	3 20
	T	12 Months	55400	105300	—	—	Frankfurt	T	6 Months	125	225	0 95	0 80	Dar es Salaam	F	12 Months	2041	3988	—	—
	T	12 Months	40100	76200	—	—	Lindi	T	6 Months	—	150	—	—	Dar es Salaam	T	6 Months	55	99	0 45	0 40
							London	Y	12 Months	4661	8856	—	—	Frankfurt	T	6 Months	—	70	—	—
<b>Songea</b>							Mafia	Y	12 Months	2661	5056	15 00	11 20	Frankfurt	F	12 Months	4681	8894	—	—
Dar es Salaam	T	6 Months	430	774	3 50	2 70	Malindi	T	6 Months	—	125	—	—	Lindi	T	6 Months	2681	5094	—	—
Iringa	T	6 Months	230	414	1 70	1 30	Mombasa	T	6 Months	95	171	0 75	0 60	London	Y	12 Months	4701	8932	2 00	1 50
Mbeeya	T	6 Months	200	360	1 50	1 20	Moshi	T	6 Months	—	180	—	—	London	Y	12 Months	2681	5094	15 10	11 40
Mtwara	T	6 Months	300	540	2 40	1 80	Nairobi	T	6 Months	—	95	—	—	Lusaka	Y	19/45 Days	—	4281	—	—
Nairobi	T	6 Months	770	1386	—	—	Paris	T	6 Months	4641	9018	—	—	Malindi	T	6 Months	135	243	0 95	0 80
Njombe	T	6 Months	120	216	0 80	0 60	Pemba	T	6 Months	90	162	0 60	0 50	Mombasa	T	6 Months	240	432	1 80	1 40
							Rome	T	6 Months	4241	8058	—	—	Mombasa	T	6 Months	170	306	1 35	1 10
							Zanzibar	T	6 Months	90	162	0 60	0 50	Moshi	T	6 Months	—	198	—	—
													Mtwara	T	6 Months	—	240	—	—	
													Nachingwea	T	6 Months	—	270	—	—	
													Nairobi	T	6 Months	315	567	2 30	1 80	
													Ndola	T	6 Months	657	1249	—	—	
													Paris	F	12 Months	4661	8856	—	—	
													Pemba	T	6 Months	90	162	0 60	0 50	
													Rome	F	12 Months	4301	8172	—	—	
													Tanga	Y	12 Months	2521	4790	13 50	10 10	
														T	6 Months	90	162	0 60	0 50	

F First Class      Y Economy Class      B/E Business Excursion  
 T Tourist Class      † Limited stopover facilities. Details on application.      \* Bank and Public Holiday Excursion. Details on application.  
 ‡ Stopovers en route not permitted.      † Excursion Fare. Details on application.

All Special and Business Excursion Fares between points in East Africa are saleable only within East Africa.

**General Sales Agents**  
 IN EAST AFRICA EAA REPRESENTS:

ADEN AIRWAYS  
 AEROFLOT  
 AEROVIAS NACIONALES DE COLOMBIA, S.A.  
 AEROVIAS VENEZOLANAS, S.A.  
 AER LINGUS  
 AERLINTE IREANN  
 AIR CANADA  
 AIR CEYLON  
 AIR FRANCE  
 AIR INDIA  
 AIR JAMAICA LTD.  
 AIR MALAWI LTD.  
 AIR NEW ZEALAND LTD.  
 ALITALIA  
 ARIANA AFGHAN AIRLINES CO. LTD.  
 AUSTRIAN AIRLINES  
 BAHAMAS AIRWAYS LIMITED  
 BRITISH EUROPEAN AIRWAYS  
 BRITISH OVERSEAS AIRWAYS CORPORATION

BRITISH UNITED AIRWAYS (Passenger only)  
 BRITISH WEST INDIAN AIRWAYS LIMITED  
 CANADIAN PACIFIC AIR LINES LIMITED  
 CESKOSLOVENSKE AEROLINIE  
 COMPANIA MEXICANA DE AVIACION, S.A.  
 COMPANIA PANAMENA DE AVIACION, S.A.  
 CYPRUS AIRWAYS LIMITED  
 DEUTSCHE LUFTHANSA AKTIENGESELLSCHAFT  
 EMPRESA CONSOLIDADA CUBANA DE AVIACION  
 ETHIOPIAN AIRLINES, INC.  
 GHANA AIRWAYS CORPORATION  
 GIBRALTAR AIRWAYS LIMITED  
 INTERFLUG  
 JAPAN AIR LINES CO. LIMITED  
 JUGOSLOVENSKE AERO TRANSPORT (JAT)  
 KUWAIT AIRWAYS CORPORATION  
 LINEAS AEREAS COSTARRICENSES, S.A.  
 MALAYSIA-SINGAPORE AIRLINES LIMITED

MALTA AIRWAYS  
 MIDDLE EAST AIRLINES AIRLIBAN  
 PAKISTAN INTERNATIONAL AIRWAYS CORPORATION  
 PAN AMERICAN WORLD AIRWAYS, INC.  
 POLSKIE LINIE LOTNICZE-LOT  
 QANTAS EMPIRE AIRWAYS LIMITED  
 ROYAL NEPAL AIRLINES CORPORATION  
 SABENA  
 SAUDI ARABIAN AIRLINES CORPORATION  
 SCANDINAVIAN AIRLINES SYSTEM  
 SERVICIO AEREO DE HONDURAS, S.A.  
 SUDAN AIRWAYS  
 SWISSAIR  
 THAI AIRWAYS INTERNATIONAL LTD.  
 TRANS AUSTRALIA AIRLINES  
 UNITED ARAB AIRLINES  
 WAAC NIGERIA LTD. (Nigerian Airways)  
 ZAMBIA AIRWAYS CORPORATION





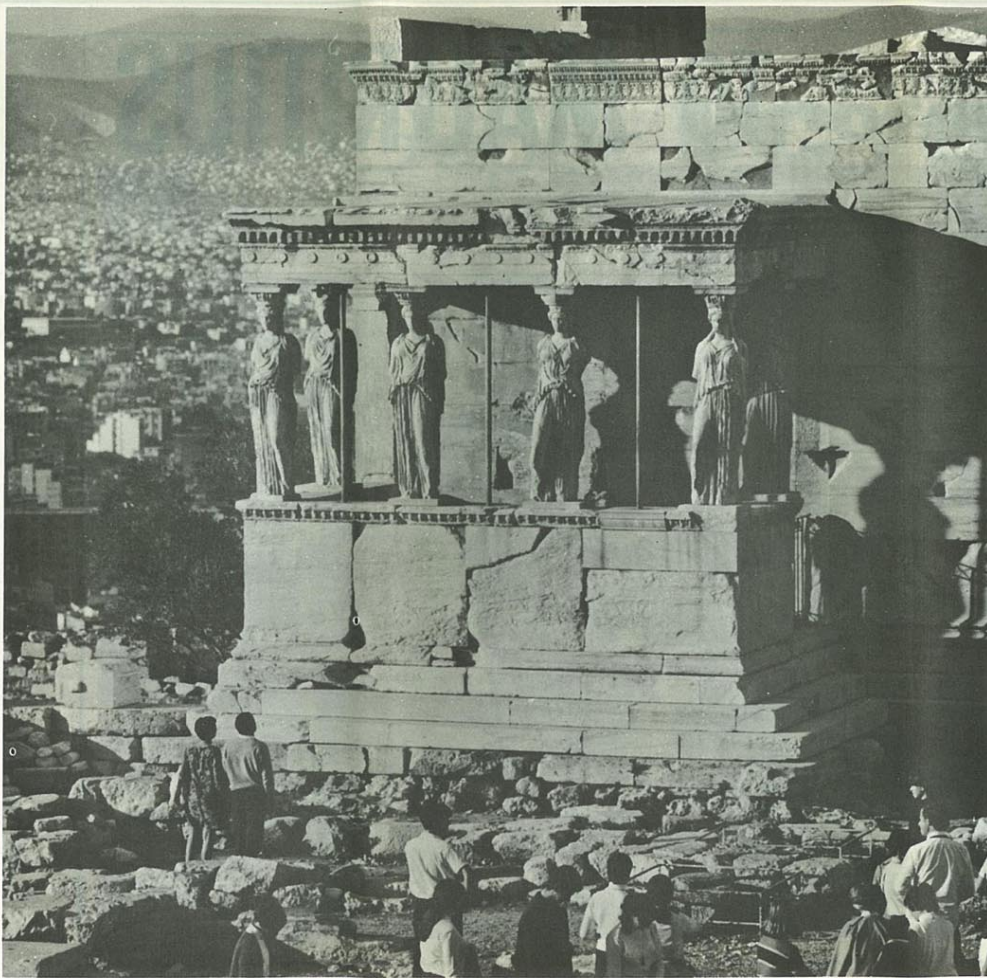
# JET *Super* VC10 TO MAURITIUS



TANGA (Tanzania)  
TORORO (Uganda)  
ZANZIBAR (Tanzania)

EAST AFRICAN AIRWAYS OFFICES AND HANDLING AGENTS

DESTINY OVERHEADS THE OCEAN TO AFRICA TAKES 10 HOURS



**JET**  
*Super*  
**VC10**  
**TO**  
**ATHENS**

## EAST AFRICAN AIRWAYS OFFICES AND HANDLING AGENTS

TOWN	OFFICE	ADDRESS	TELEPHONE	TELEGRAMS
ACCRA (Ghana)	Ghana Airways	Ghana House, P.O. Box 1636	64851	Ghanair
ADDIS ABABA (Ethiopia)	East African Airways Representative	P.O. Box 3249	62652/65370	Airservice
	East African Airways	Ato Tesfaye Kedjela Bldg., Ground floor Ras Desta Damtew Avenue, P.O. Box 3381	43018-43019	Airservice
ADEN (Southern Yemen)	Ethiopian Airlines Inc.	Haile Selassie I Square	13300	Ethair
	Air India	Queens Way, Maalla	2087/88/89	Airindia
ARUA (Uganda)	East African Airways Representative	Room 46, P & O House, Tawahi, P.O. Box 1189	24436	Airservice
ARUSHA (Tanzania)	East African Airways Agent	c/o Arua Bus Syndicate Ltd., P.O. Box 40	—	Airservice
ATHENS (Greece)	East African Airways Agent	c/o Coopers (Travel) Ltd., P.O. Box 142	2001	Airservice
BIRMINGHAM (England)	East African Airways	10, Othonos Street	222521ext.16	Estafica
	British Overseas Airways Corporation East African Airways Representative	Grosvenor House, New Street Queen's College Chambers 38a, Paradise Street	021 643 4155	Speedbird
BLANTYRE (Malawi)	Air Malawi	Robins Road, P.O. Box 84	021 643 0570	Estafica
BOMBAY (India)	East African Airways	199, Jamshedji Tata Road, Churchgate	314/5	Airmalawi
BUJUMBURA (Burundi)	Air India	Reclamation	246005/245949	Airservice
	Sabena Belgian World Airlines	New India Assurance Bldg., Mahatma Gandhi Rd., Fort	25-9191	Airindia
CAIRO (U.A.R.)	East African Airways	10, Chaussee Prince Rwagasono	2150/2553	Airsabena
DAR ES SALAAM (Tanzania)	East African Airways	I, Sharia El Bustan Airways Terminal, Tancot House, City Drive, P.O. Box 543	71447/1	Airservice
DODOMA (Tanzania)	East African Airways Agent	c/o George's Garage, P.O. Box 54	21251	Airservice
ELDORET (Kenya)	East African Airways Agent	c/o Hughes Ltd., P.O. Box 85	85 & 292	Airservice
ENTEBBE (Uganda)	East African Airways	Entebbe Airport, P.O. Box 68	516	Airservice
FRANKFURT (Germany)	British Overseas Airways Corporation	Kaiserstrasse 26	280891	Speedbird
GLASGOW (Scotland)	East African Airways Representative	Wiesenhuetten Platz 39	231250/9	Airservice
	British Overseas Airways Corporation	Empire House, 29 Sauchiehall Street	041-221-1895/1896	Estafica
GULU (Uganda)	East African Airways Agent	86 St. Vincent Street	15	Airservice
IRINGA (Tanzania)	East African Airways Agent	c/o H. S. Patel & Co. Ltd., P.O. Box 15	35	Airservice
JINJA (Uganda)	East African Airways Agent	c/o Maninga Estates, P.O. Box 69	2492	Airservice
KAMPALA (Uganda)	East African Airways	c/o Equatorial Agencies Ltd., P.O. Box 556 Airways House, cnr. Harcourt Avenue and Colville Street, P.O. Box 523	54265	Airservice
KASESE (Uganda)	East African Airways Agent	c/o Kilembe Mines Ltd., P.O. Box 1	8	Kilemines
KARACHI (Pakistan)	East African Airways Representative	Shafi Chambers, Club Road	54378	Airservice
KIGALI (Rwanda)	Pakistan International Airlines	As above	51061	Pakintair
	Sabena Airways	366, Bd Central., B.P.96	294	Airsabena
KILWA (Tanzania)	East African Airways Agent	c/o B.W. Mkapa, P.O. Kilwa	21	Airservice
KISUMU (Kenya)	East African Airways Agent	c/o Kisumu Travel Service, P.O. Box 764	64	Airservice
KITALE (Kenya)	East African Airways Agent	c/o Hughes (Kitale) Ltd., P.O. Box 97	44	Airservice
LAGOS (Nigeria)	Nigeria Airways	Airways House, Lagos Airport	33631	Westafair
LINDI (Tanzania)	East African Airways Agent	c/o Twentsche Overseas Trading Co. Ltd., P.O. Box 33	161	Airservice
LONDON (England)	East African Airways	29, New Bond Street, W.1	01-493-8973	Estafica
LUSAKA (Zambia)	British Overseas Airways Corporation	Airways Terminal, S.W.1.	01-834-4466	Speedbird
	Zambia Airways	Farmers House, Cairo Road, P.O. Box 272	72961	Airzambia
MAFIA (Tanzania)	East African Airways Representative	Chester House, Cairo Road, P.O. Box 2635	74444	Airservice
MALINDI (Kenya)	East African Airways Agent	c/o H. J. Stanley & Sons Ltd., P.O. Box 32	—	Stanleysons
MANCHESTER (England)	East African Airways	c/o E. African Tourist Agency Ltd., P.O. Box 352	95	Airservice
	British Overseas Airways Corporation East African Airways Representative	8 Exchange Street, St. Ann's Square 406/7 Manchester Royal Exchange	Deansgate 8501/4 061-834-6458/ 061-834-6459	Estafica
MAURITIUS	Rogers & Co.	Corner Quay and Sir William Newton Street, P.O. Box 60, Port Louis	2-1281	Finance
MBEYA (Tanzania)	East African Airways	Standard Building, Main Avenue	61	Airservice
MOMBASA (Kenya)	East African Airways	Airways Terminal, Kilindini Road, P.O. Box 677	20351/9 & 20350	Airservice
MOSHI (Tanzania)	East African Airways Agent	c/o Emilies Ltd., P.O. Box 29	2701	Airservice
MTWARA (Tanzania)	East African Airways Agent	c/o Twentsche Overseas Trading Co. Ltd., P.O. Box 55	47	Airservice
MUSOMA (Tanzania)	East African Airways Agent	c/o Musoma Emporium (Tanganyika) Ltd., P.O. Box 19	—	Airservice
MWANZA (Tanzania)	East African Airways	Post Street, P.O. Box 592	2249	Airservice
NACHINGWEA (Tanzania)	East African Airways Agent	c/o Central African Transport Co., P.O. Box 12	5	Airservice
NAIROBI (Kenya)	East African Airways	Mackinnon's Building, Kenyatta Avenue, P.O. Box 1010	26451	Airservice
	Zambia Airways	Airways Terminal, Koinange Street, P.O. Box 1010	2439, 3225, 2763	Airzambia
NDOLA (Zambia)	Zambia Airways	Airways Terminal, The Broadway, P.O. Box 184	6	Airservice
NJOMBE (Tanzania)	East African Airways Agent	c/o Tanganyika Wattle Co. Ltd.	742-41-49	Bealine
PARIS (France)	British European Airways	129, Avenue Champs Elysees and 38 Avenue de L'Opera	225-05-25	Estafica
PEMBA (Tanzania)	East African Airways Representative	I, Rue de Berr	62	—
	East African Airways	c/o Pemba Travel Services, Chake Chake, P.O. Box 92	480400, 460803	Bealine
ROME (Italy)	British European Airways	Via Barberini 69	489956	Airservice
SAO HILL (Tanzania)	East African Airways Agent	Hotel Quirinale, Via Nazionale 6a	—	Airservice
SONGEA (Tanzania)	East African Airways Agent	c/o John's Corner, Sao Hill Airfield, P.O. Box 22	—	Airservice
SOROTI (Uganda)	East African Airways Agent	c/o Twentsche Overseas Trading Co. Ltd., P.O. Box 15	10	Airservice
TABORA (Tanzania)	East African Airways Agent	c/o Hasham Mitha & Co. Ltd., P.O. Box 54	31	Airservice
TANGA (Tanzania)	East African Airways	c/o A. J. Nazareth, Ltd., P.O. Box 115	27171/2/8	Airservice
TORORO (Uganda)	East African Airways	Airways Terminal, Ngamiani Street, P.O. Box 660	326	Airservice
ZANZIBAR (Tanzania)	East African Airways Agent	c/o Bawa Travel Service, P.O. Box 16	2181	Airservice
	East African Airways	Airways Terminal, Vuga Road, P.O. Box 773	—	Airservice

**EAST AFRICAN AIRWAYS — HEAD OFFICE: P.O. BOX 19002, EMBAKASI, NAIROBI AIRPORT. TEL: 82222. TELEGRAMS: AIRSERVICE**