

EAST AFRICAN AIRWAYS

EAST AFRICAN AIRWAYS

CALENDAR 1965/6

**time
table**

**time
table**

NOVEMBER					DECEMBER				
S	7	14	21	28	S	5	12	19	26
M	8	15	22	29	M	6	13	20	27
T	9	16	23	30	T	7	14	21	28
W	10	17	24	.	W	8	15	22	29
T	11	18	25	.	T	9	16	23	30
F	12	19	26	.	F	10	17	24	31
S	13	20	27	.	S	11	18	25	.

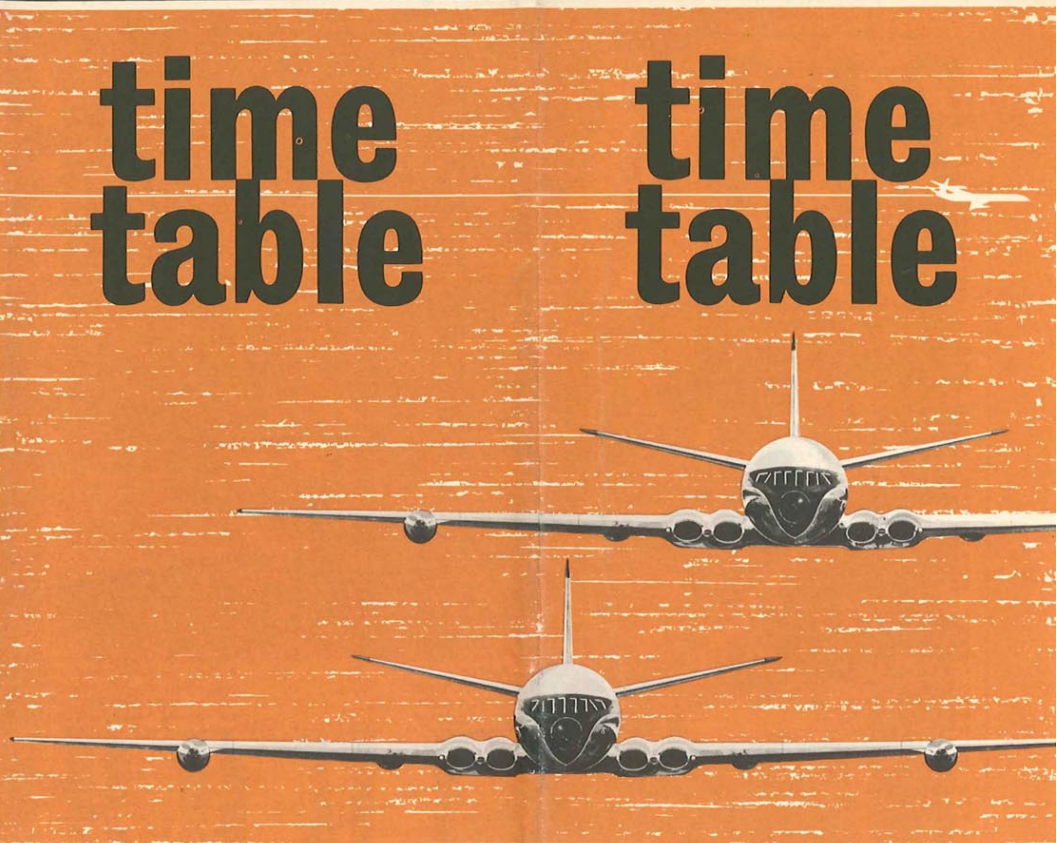
JANUARY					FEBRUARY					
S	2	9	16	23	30	S	6	13	20	27
M	3	10	17	24	31	M	7	14	21	28
T	4	11	18	25	.	T	8	15	22	.
W	5	12	19	26	.	W	9	16	23	.
T	6	13	20	27	.	T	10	17	24	.
F	7	14	21	28	.	F	11	18	25	.
S	8	15	22	29	.	S	12	19	26	.

MARCH					APRIL				
S	6	13	20	27	S	3	10	17	24
M	7	14	21	28	M	4	11	18	25
T	8	15	22	29	T	5	12	19	26
W	9	16	23	30	W	6	13	20	27
T	10	17	24	31	T	7	14	21	28
F	11	18	25	.	F	8	15	22	29
S	12	19	26	.	S	9	16	23	30

MAY					JUNE					
S	1	8	15	22	29	S	5	12	19	26
M	2	9	16	23	30	M	6	13	20	27
T	3	10	17	24	31	T	7	14	21	28
W	4	11	18	25	.	W	8	15	22	29
T	5	12	19	26	.	T	9	16	23	30
F	6	13	20	27	.	F	10	17	24	.
S	7	14	21	28	.	S	11	18	25	.

JULY					AUGUST					
S	3	10	17	24	31	S	7	14	21	28
M	4	11	18	25	.	M	8	15	22	29
T	5	12	19	26	.	T	9	16	23	30
W	6	13	20	27	.	W	10	17	24	31
T	7	14	21	28	.	T	11	18	25	.
F	8	15	22	29	.	F	12	19	26	.
S	9	16	23	30	.	S	13	20	27	.

SEPTEMBER					OCTOBER					
S	4	11	18	25	S	2	9	16	23	30
M	5	12	19	26	M	3	10	17	24	31
T	6	13	20	27	T	4	11	18	25	.
W	7	14	21	28	W	5	12	19	26	.
T	8	15	22	29	T	6	13	20	27	.
F	9	16	23	30	F	7	14	21	28	.
S	10	17	24	.	S	8	15	22	29	.



YOU MAY BOOK THROUGH



NO BOOKING FEE

**EFFECTIVE DATE 1st NOVEMBER 1965
NEXT ISSUE 1st APRIL 1966**

TRAVEL ADVICE

Some recommendations

- Save money by purchasing all tickets for your journey before departure.
- See your EAA—APPOINTED TRAVEL AGENT. He is there to help and will offer you complete trip planning advice at no extra cost.
- Let us know your contact address or telephone number up to departure time.
- Book your hotel accommodation at destination well in advance and check if accommodation will be provided at transfer points.
- Pack all you need during flight in a small cabin bag. All other articles should be packed in registered baggage, one case containing all that is required at night-stops.
- Keep your Cabin baggage to a minimum.
- Carry your Passport, Health Certificate and Currency with you. Do not pack them.
- Carry any valuables, such as jewellery, personally whenever possible.
- Check the "Message Board" on arrival. If friends are meeting you, give them your service and flight number.

PASSENGER INFORMATION

YOUR TICKET AND CONDITIONS OF CONTRACT

Your ticket is issued subject to these Regulations and to our General Conditions of Carriage of Passengers and Baggage. These conditions are available in all E A A offices and extracts can be found in your ticket.

RETURN AND ONWARD BOOKINGS

You are requested to check your return journey and onward reservations as soon as possible after your arrival at destination or transfer point, particularly attendance and departure times.

STOPOVERS

You may break your journey at one or more places en route and retain the benefit of the through fare, except where precluded by Government regulations, or on some Excursion Fares, provided notice is given before commencing the journey.

CHILDREN AND INFANTS

An infant under two accompanied by an adult, and not occupying a seat, is charged 10 per cent of the normal First, Tourist or Economy Class fare. Additional infants under two accompanying the same adult, an infant under two occupying a separate seat, and children of two years and over, who have not yet reached their twelfth birthday, are charged 50 per cent of the normal First, Tourist or Economy Class adult fare. Age is taken at the beginning of the outward journey.

PASSPORT, IMMIGRATION AND HEALTH REGULATIONS

Any E A A or Travel Agents' office will gladly advise you of the requirements of your journey.

BAGGAGE

For each adult and child paying half the adult fare, the free allowance on First Class services is 30 kilos (66 lbs.) and on Tourist or Economy Class services it is 20 kilos (44 lbs.). There is no free allowance for an infant carried at 10% of the adult fare, but infant's food for consumption en route and an infant's carrying basket may be carried free.

However, when First Class fare has been paid and a Tourist Class service is used as part of a through journey, the First Class baggage allowance may be carried over that sector, without additional charge. Certain personal articles may be carried free, and details of these may be obtained from any E A A or Travel Agents' Office. Brief cases, cabin bags, attache cases, parcels, typewriters and heavy cameras are weighed as part of your free allowance. If this is exceeded you become liable to excess charges.

Details of excess baggage charges and excess value charges (valuable baggage) can be obtained from any E A A or Travel Agents' office.

YOUR DEPARTURE

It is essential to attend at the departure terminal or airport not later than the time advised. This allows the minimum time to complete all formalities. Flights cannot be delayed for passengers arriving late and we cannot accept responsibility in such cases.

Attendance times should always be checked prior to departure date. These times vary according to the type of aircraft and according to the distance between Town Terminal and Airport.

CANCELLATIONS

Passengers who do not travel on the service for which they hold a reservation, and who have not cancelled in advance, are liable to payment of a "no-show" charge. Refund of fare for reservations cancelled or transferred at short notice cannot be guaranteed.

ABBREVIATIONS

The following abbreviations are used in this Timetable:

CATERING SERVICES—Breakfast, Lunch or Dinner X
Light Refreshments ?

AIRCRAFT TYPES

Comet 4	COM	Boeing	B707
Friendship	FRP	Viscount	VIS
Dakota	DC3	VCLD	V10
Dominie	DH89		

AIRLINES

E.A.A.	EC	Aden Airways	AD
B.O.A.C.	BA	Air India	AI
B.U.A.	BR	Zambia Airways	QZ
C.A.A.	CE	Air Malawi	QM
		Air Rhodesia	RH

CLASSES

First Class	F	Night Tourist	NT
Tourist Class	T	Freighter Service	★
Economy Class	Y		

TIMETABLE

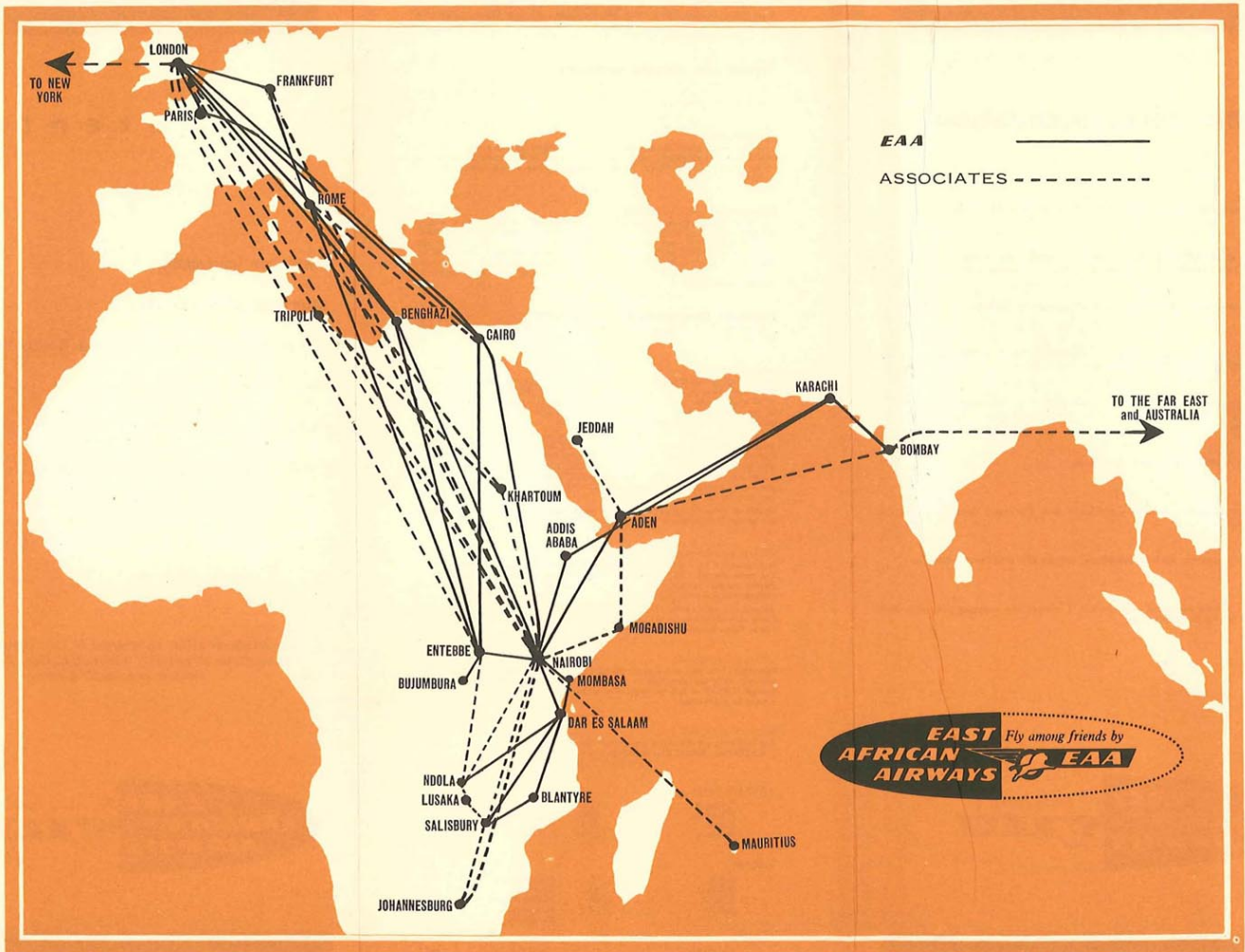
Contents

Passenger Information	1
International Route Map	2
E A A Domestic and Regional Route Map	3
Passenger Schedules	4-15
Fares and Rates Guide	16-21
E A A Offices and Handling Agents	23

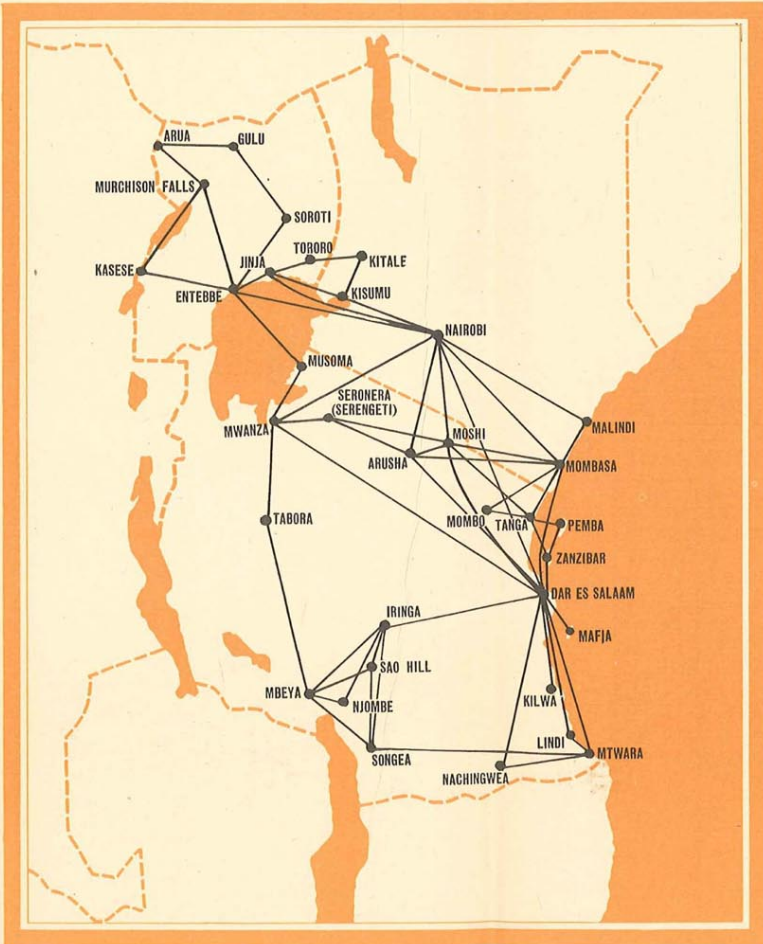
The information contained in this timetable is subject to alteration without notice. All times shown are local times.



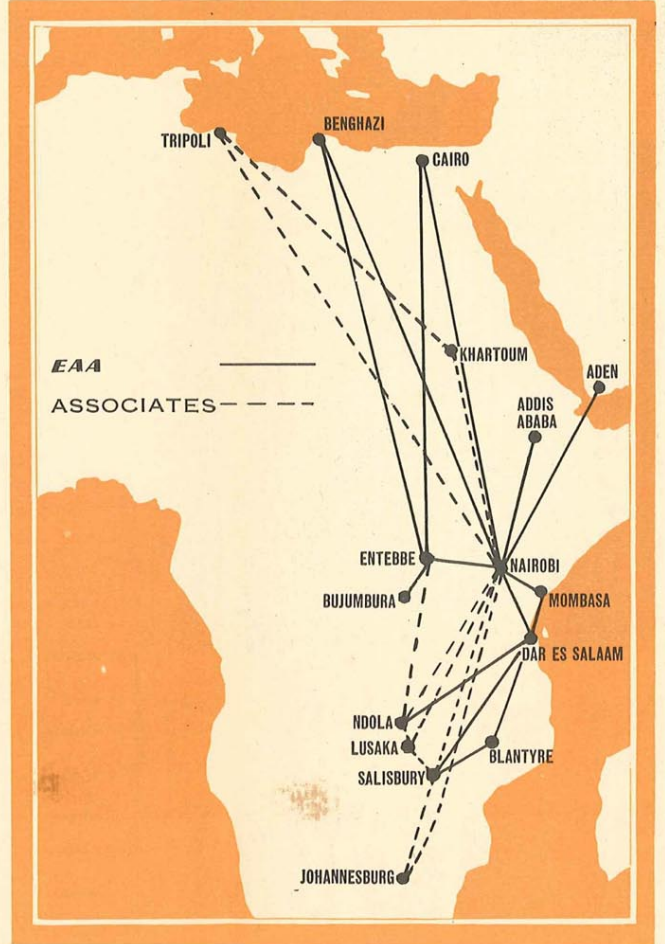
INTERNATIONAL ROUTES

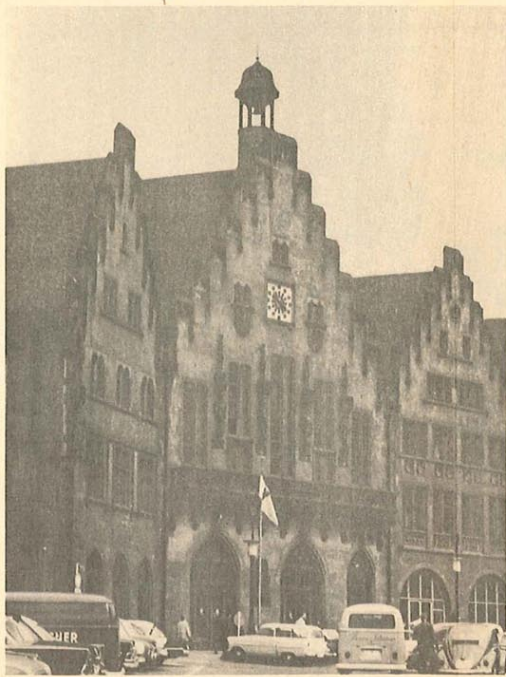


EAST AFRICA



AFRICA





JET TO FRANKFURT

TABLE 1 EAST AFRICA/U.A.R./LIBYA/ITALY/GERMANY/France/BRITAIN

DAY	TUE.		WED.			THU.		FRI.		SAT.		SUN.		
	COM	FRP	COM	FRP	COM	FRP	COM	FRP	COM	FRP	COM	FRP	COM	FRP
AIRCRAFT	EC	EC	EC	EC	EC	EC	EC	EC	EC	EC	EC	EC	EC	EC
FLIGHT No.	720	714	330	782	706	330	708	356	308	712	310	718	722	306
CLASS	F/T/Y	F/T/Y	T	F/T/Y	F/T/Y	T	F/T/Y	T	T	F/T/Y	T	F/T/Y	T	T
+3 DAR ES SALAAM	dep 0645	1900	2015			1900			1800		1930			2045
+3 MOMBASA	dep 0800	2025	2125			2025		1915		2055			1730	1940
+3 NAIROBI	dep 1000	0900				2145		2035	2150		2215		1930	2100
+3 ENTEBBE	arr 1435					0900					2300		1100	
+2 CAIRO	dep 1300					0945					0425			
+2 BENGHAZI	dep 1520					0540					0510			
+1 ROME	arr 1635					0600					0455			
+1 FRANKFURT	arr 1720					0645					0540			
+1 PARIS	arr 1830					0845					0740			
GMT LONDON	arr 1840	1830				0740					0900		2150	0735

NOTES: 1. Times at London to read one hour later after 20th March, 1966.
 2. *Served to Joining Passengers only.
 3. †Served to Disembarking Passengers only.

TABLE 2 BRITAIN/France/GERMANY/ITALY/LIBYA/U.A.R./EAST AFRICA

DAY	MON.		TUE.			WED.			THU.		FRI.		SAT.		SUN.			MON.
	COM	FRP	COM	FRP	COM	FRP	COM	FRP	COM	FRP	COM	FRP	COM	FRP	COM	FRP	COM	
AIRCRAFT	EC	EC	EC	EC	EC	EC	EC	EC	EC	EC	EC	EC	EC	EC	EC	EC	EC	EC
FLIGHT No.	719	335	705	781	309	715	323	709	339	355	717	507	713	319	721	703	331	
CLASS	F/T/Y	T	F/T/Y	F/T/Y	T	F/T/Y	T	F/T/Y	T	T	F/T/Y	T	F/T/Y	T	F/T/Y	T	F/T/Y	T
GMT LONDON	dep 1730		2100			2015			1715		1745		1930		1815	2330		
+1 PARIS	arr 0840					2000			1915				2130					
+1 FRANKFURT	arr 0840					2230			2000				2215					
+1 ROME	arr 0010					0105			2150		2055		2140					
+2 BENGHAZI	arr 0355					0150			2235		2140							
+2 CAIRO	arr 0030					0440							0345					
+3 ENTEBBE	arr 0655					1045			0730		0635		0720					
+3 NAIROBI	arr 0840		1110			1230			0915		0820		1030					
+3 MOMBASA	arr 1310		1215			1500			1630		1630		2100		1130	1630		1440
+3 DAR ES SALAAM	arr 1515		1620			1750			1750		1835		1120		1750			1750
	arr 1740		1325			1915			1405		1405		1245		1245			1555

NOTES: 1. Times at London to read one hour later after 20th March, 1966.
 2. *Served to Joining Passengers only.

EAST AFRICA/ETHIOPIA/SOMALI REPUBLIC/S. ARABIAN FED./ PAKISTAN/INDIA

TABLE 3

DAY	MONDAY		TUE.	THURSDAY				FRIDAY		SATURDAY			SUNDAY		
AIRCRAFT	FRP	COM	VIS	FRP	COM	COM	B707	COM	COM	VIS	COM	COM	FRP	V10	B707
SERVICE	EC	EC	AD	EC	EC	EC	AI	EC	EC	AD	EC	EC	EC	BR	AI
FLIGHT No.	312	736	480	336	772	715	210	709	738	468	717	734	320	101	202
CLASS	T	F/T/Y	T	T	F/T/Y	F/T/Y	F/T/Y	F/T/Y	F/T/Y	T	F/T/Y	F/T/Y	T	T	F/T/Y
+3 DAR ES SALAAM	dep	1700		0730									0730		
+3 ENTEBBE	dep	1130	?			1130		0815	?		0720		?	1030	
+3 NAIROBI	arr	1300	1815	1205	1330	1230		0915	?	0700	0820	1030	1120	1120	1515
+3 ADDIS ABABA	arr	1915	0700		1520			1115	1305						
+3 MOGADISHU	arr		0945						1405	0945	1030				
+3 ADEN	arr	2300	1335				1745			1335			1215	1415	1745
+5 KARACHI	arr	0445					1825		2035			2000			
+5 BOMBAY	dep	0545						FRI.	2135*			2100			MON.
	arr	0755						0040	2345*			2310			0040

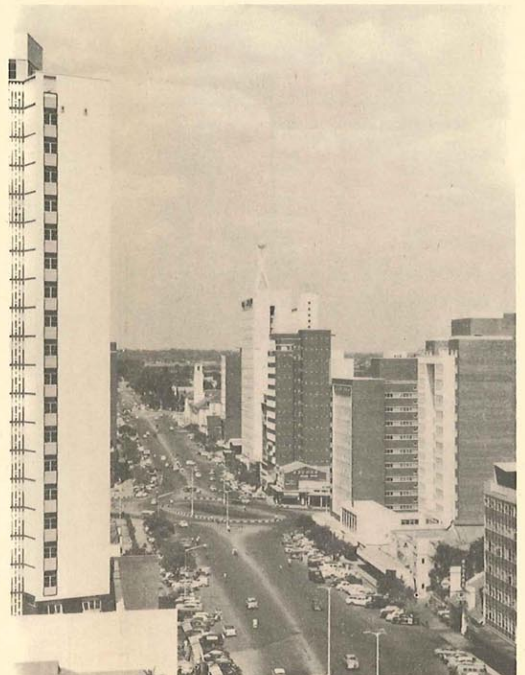
NOTE: 1. *NO LOCAL TRAFFIC MAY BE CARRIED KHJ/BOM ON EC738.

INDIA/PAKISTAN/S. ARABIAN FED./SOMALI REPUBLIC ETHIOPIA/EAST AFRICA

TABLE 4

DAY	MONDAY		TUESDAY		THURSDAY			FRIDAY	SATURDAY			SUNDAY						
AIRCRAFT	VIS	V10	COM	FRP	B707	FRP	COM	COM	VIS	COM	COM	FRP	COM	COM	B707	DC3		
SERVICE	AD	BA	EC	EC	AI	EC	EC	EC	AD	EC	EC	EC	EC	EC	AI	EC		
FLIGHT No.	469	168	735	371	209	323	771	708	481	712	737	507	718	733	732	713	201	005
CLASS	T	F/T/Y	F/T/Y	T	F/T/Y	T	F/T/Y	F/T/Y	T	F/T/Y	T	F/T/Y	F/T/Y	F/T/Y	F/T/Y	T		
+5 BOMBAY	dep		1030		0900				0115*				0045			0900		
+5 KARACHI	arr		1140		1240				0225*				0155					
+3 ADEN	arr		1440		1035				0325				0455			1035		
+3 MOGADISHU	arr	1130	1540		1115			1130					0555			1115		
+3 ADDIS ABABA	arr	1435						1435										
+3 NAIROBI	arr	1745	1825	1930	1245	1620	1805	1245	0625	0725			0840			1245		
+3 ENTEBBE	arr	2245	1925	2100	1630	2300	0001	2300	0915	1000	2300		1100	1130	1800			
+3 DAR ES SALAAM	arr	2350	2040		1915			SAT.	1245	SUN.	0001		1200			1245		

NOTE: 1. *NO LOCAL TRAFFIC MAY BE CARRIED BOM/KHI ON EC737.



JET TO SALISBURY

TABLE No. 7

AFRICA TO EUROPE SERVICES

GMT	DAY AIRCRAFT SERVICE FLIGHT No. CLASS	MONDAY		TUESDAY			WEDNESDAY				THURSDAY			FRIDAY				SATURDAY			SUNDAY					
		V10	V10	COM	V10	V10	COM	V10	COM	V10	V10	V10	COM	V10	V10	COM	V10	COM	V10	COM	V10	V10	V10	V10		
		BA	BA	EC	BA	BA	EC	BR	EC	BA	BA	BA	EC	BA	BR	EC	CE	BA	EC	BA	EC	BR	EC	BA	BA	
+2	JOHANNESBURG	dep	1845		1845				1845	0945						1845		1845							1845	
+2	SALISBURY	arr	2015		2015				2015						2015											
		dep	2100		2100				2100						0800		1515								1900	
+2	LUSAKA	arr	x		x				x						0850		1610							x	x	
		dep	x		x				x						0935		1710							x	x	
+2	NDOLA	arr													1020											
+4	MAURITIUS	dep													1105											
+3	DAR ES SALAAM	dep	1830					0645					2000												2045	
+3	NAIROBI	arr	TUE 2130	0035		WED 0035		0800		THU 0035		1430	2120			SAT 0035	2040	2330						2200	2235	2330
		dep	2245	0125	1000	1045	0125	0900	1320	2300	0125	1515	2230	2300	1125	2300	0125	2155	2300	0015	1100	1320	2300	2325	0015	
+3	ENTEBBE	arr	2350						THU 1410	0001					FRI 0001			SUN 0001						1200	x	
		dep	0035						1500	0045					0045		1515	0045		0045				1245		
+2	KHARTOUM	arr																SUN 2335								
		dep																0020								
+2	TRIPOLI	arr			1535																					
		dep			1620																					
+2	CAIRO	arr						1300					FRI 0205													
		dep						1345					0250				0425	0510								
+2	BENHAZI	arr			1435					0455											0455				MON 0330	
		dep			1520					0540											0540				0415	
+1	ROME	arr	0505	0615	1635					0615			0505	0600	1615		0615				0655			1800	x	MON 0530
		dep	0550	0700	1720					0700			0550	0645	1700		0700				0740			1845	0615	0500
+1	FRANKFURT	arr																						2040		
		dep																						2125		
+1	PARIS	arr																								
		dep																								
	LONDON	arr	0710	0820	1840	1750	0855	1830	2015	0740	0820	2055	0710	0930	1820	2030	0840	0820	0500	0900	0555	2150	1850	0735	0620	0710

- NOTES: 1. All British United Airways Services operate to and from Gatwick Airport, London.
 2. Special fares apply for travel by BOAC/BUA services between South Africa/Central Africa and between Central Africa/East Africa. Details on application.
 3. x*Served to joining passengers only.
 4. x†Served to disembarking passengers only.
 5. Times at London to read one hour later after 20th March, 1966.
 6. No traffic may be carried Ndola/Lusaka or v.v. Ndola/Salisbury or v.v. nor Luşaka/Salisbury or v.v. on B.U.A. services.
 7. No traffic may be carried London/Rome or v.v. on C.A.A. services except stopover traffic at Rome when the other portion of the through journey is by C.A.A.
 8. No traffic may be carried London/Rome or v.v. on B.O.A.C. services except stopover traffic at Rome when the other portion of the through journey is by B.O.A.C.
 9. No traffic may be carried Lusaka/Salisbury or v.v. on B.O.A.C. services.

TABLE No. 8

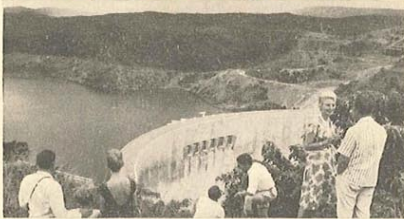
EUROPE TO AFRICA SERVICES

+ - GMT	DAY AIRCRAFT SERVICE FLIGHT No. CLASS	MONDAY			TUESDAY			WEDNESDAY				THURSDAY			FRIDAY			SATURDAY				SUNDAY					
		COM	V10	V10	V10	COM	V10	V10	V10	COM	V10	V10	COM	V10	V10	COM	V10	V10	COM	V10	V10	COM	V10	V10	COM		
		EC	BA	BA	BA	EC	BR	BR	BR	BA	BA	EC	BR	EC	CE	BA	EC	BA	BA	EC	BA	BA	BR	EC	BA	BA	EC
F/T/Y	F/T/Y	F/T/Y	F/T/Y	F/T/Y	F/T/Y	T	F/T/Y	F/T/Y	F/T/Y	T	F/T/Y	F/T/Y	F/T/Y	F/T/Y	F/T/Y	F/T/Y	F/T/Y	F/T/Y	F/T/Y	T	F/T/Y	F/T/Y	F/T/Y	F/T/Y	F/T/Y		
	LONDON	dep	1730	1830	1945	1945	2100	2320	1500	1945	2015	2120	1715	1945	2130	1745	1945	2100	1930	1945	2145	2320	1815	1930	1945	2330	
+1	PARIS	arr																									
		dep	x	x	x	x	x	x	x	x	x	x	x	x	x	x	x	x	x	x	x	x	x	x	x	x	
+1	FRANKFURT	arr			2210						2230															2110	
		dep			2255						2315						2325									2255	
+1	ROME	arr				2300	0010				2300	0105		2150	2300		2055	2300				2300	0100			2245	
		dep				2345	0055				2345	0150		2235	2345		2140	2345				2345	0145			2330	
+2	BENGHAZI	arr					0355										x	x								0625	
		dep					0440																			0710	
+2	CAIRO	arr	TUE																								
		dep	0030																								
+2	TRIPOLI	arr																									
		dep		2345																							
+2	KHARTOUM	arr																									
		dep																									
+3	ENTEBBE	arr																									
		dep	0655																								
+3	NAIROBI	arr																									
		dep	0840	0815	TUE	0845	0930	0910	1110	1120	0225	1000	1230			0915	0825	0855			0820	0825	1000	1030	0825	1025	1120
+3	DAR ES SALAAM	arr																									
+4	MAURITIUS	arr																									
+2	NDOLA	arr																									
		dep																									
+2	LUSAKA	arr																									
		dep																									
+2	SALISBURY	arr																									
		dep																									
+2	JOHANNESBURG	arr																									

- NOTES: 1. All British United Airways Services operate to and from Gatwick Airport, London.
 2. Special fares apply for travel by BOAC/BUA services between South Africa/Central Africa and between Central Africa/East Africa. Details on application.
 3. x*Served to joining passengers only.
 4. x†Served to disembarking passengers only.
 5. Times at London to read one hour later after 20th March, 1966.
 6. No traffic may be carried Ndola/Lusaka or v.v. Ndola/Salisbury or v.v. nor Lusaka/Salisbury or v.v. on B.U.A. services.
 7. No traffic may be carried London/Rome or v.v. on C.A.A. services except stopover traffic at Rome when the other portion of the through journey is by C.A.A.
 8. No traffic may be carried London/Rome or v.v. on B.O.A.C. services except stopover traffic at Rome when the other portion of the through journey is by B.O.A.C.
 9. No traffic may be carried Lusaka/Salisbury or v.v. on B.O.A.C. services.



See the splendours of Rhodesia



on a **FLAME LILY HOLIDAY**



Your friendly travel agent will tell you about the many other all inclusive holidays.

Many wonderful all-inclusive holidays from

DAR ES SALAAM - ENTEBBE
NAIROBI - MOMBASA



EAST AFRICAN AIRWAYS
CENTRAL AFRICAN AIRWAYS

TABLE 5 EAST AFRICA TO MALAWI, ZAMBIA & RHODESIA

DAY	MON.	TUE.		WED.		FRI.		SAT.		SUN.	
		FRP	VIS	FRP	COM	VIS	VIS	FRP	FRP	FRP	VIS
AIRCRAFT	QZ	EC	RH	EC	EC	CE	QZ	EC	EC	EC	QM
SERVICE	805	505	861	301	781	807	883	303	507	509	801
FLIGHT No.	GMT										
CLASS	T	T	T	T	F/T/Y	T	T	T	T	T	T
+3 NAIROBI	dep 1700	0745			1215	1015			1000	0700	1015*
+3 MALINDI	dep							0855	?	?	
+3 MOMBASA	arr				0855	?	?	0915	1120		
	dep							0935	1140		?
+3 TANGA	arr	?			0925			1005			
	dep				0945			1025	?		
+3 ZANZIBAR	arr				1015			1055			
	dep				1035			1115			
+3 DAR ES SALAAM	arr		0945		1055	1325		1135	1245	0900	1200*
	dep		1015		1410			1315		0930	1240
+2 NDOLA	arr	1945				1300				1200	?
	dep	2030				1350	1545		?	1250*	?
+2 LUSAKA	arr	2120	?		?					1340*	
	dep	2150					?				
+2 BLANTYRE	arr	?	1210							1510	1420
	dep		1300							1555*	1505
+2 SALISBURY	arr	2300		1415		1525		1815		1720*	1620
+2 LIVINGSTONE	arr						1525				

NOTES: 1. NO LOCAL TRAFFIC MAY BE CARRIED NBO/DAR ON QM801.
2. NO LOCAL TRAFFIC MAY BE CARRIED BLZ/SAY ON EC507 EXCEPT STOPOVER TRAFFIC AT BLZ WHEN THE OTHER PORTION OF THE THROUGH JOURNEY IS BY E.A.A.
3. NO LOCAL TRAFFIC MAY BE CARRIED NLA/LUN ON EC509



BARCLAYS BANK D.C.O.

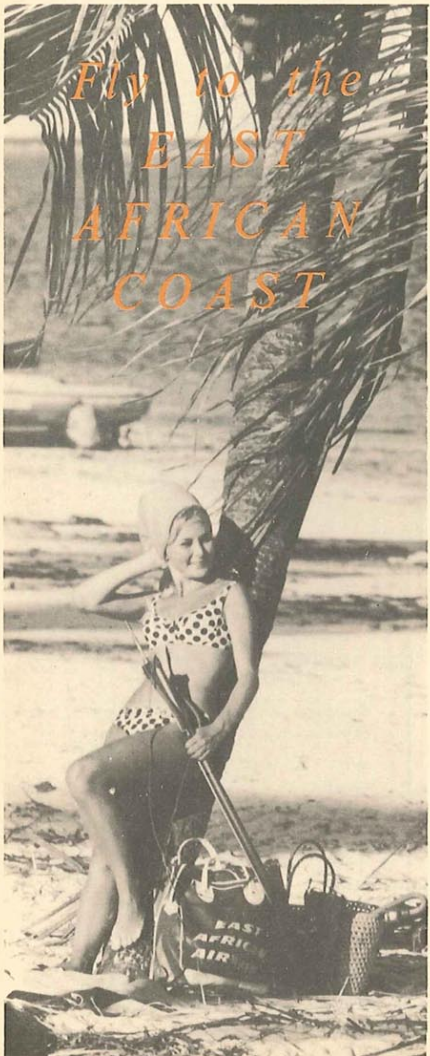
provide a first class service for all travellers.



TABLE 6 RHODESIA, ZAMBIA & MALAWI TO EAST AFRICA

DAY	MON.	TUE.	WED.	THU.	SAT.	SUN.	MON.		
+ AIRCRAFT	VIS	VIS FRP FRP	COM	FRP VIS VIS	VIS FRP	FRP FRP FRP	FRP		
- SERVICE	QZ	RH EC EC	EC	EC QZ CE	QM EC	EC EC EC	EC		
GMT FLIGHT No.	804	862 506 330	782	336 888 806	802 310	306 508 510	304		
CLASS	T	T T T	F/T/Y	T T T	T T	T T T	T		
+2 LIVINGSTONE	dep				1230				
+2 SALISBURY	dep 0900	1040		1615	1000	1120	1130*		
+2 BLANTYRE	arr dep	1200 →1345			1240 1320	1255* 1335			
+2 LUSAKA	arr dep				1110 1145		1425*		
+2 NDOLA	arr dep	1035 1115			1335 →1435		1520* 1550		
+3 DAR ES SALAAM	arr dep	1750 1820	1900	1930 2015	0730	1700 1745*	1930 1500 1740 1815	2030 2100	1400
+3 ZANZIBAR	arr dep				0750 0810		1520 1540	1420 1440	
+3 TANGA	arr dep				0840 0910		1610 1640	1510 1540	
+3 MOMBASA	arr dep		2005	0940		2035	1710 1730	1920 1940	1610 1630
+3 MALINDI	arr						1750		1650
+3 NAIROBI	arr	1600	2020	2125		1920 1930*	2100	2300	

NOTES: 1. NO LOCAL TRAFFIC MAY BE CARRIED SAY/BLZ ON EC508.
 2. NO LOCAL TRAFFIC MAY BE CARRIED DAR/NBO ON QM802 EXCEPT STOPOVER TRAFFIC AT DAR WHEN THE OTHER PORTION OF THE THROUGH JOURNEY IS BY C.A.A.
 3. NO LOCAL TRAFFIC MAY BE CARRIED LUN/NLA ON EC510



BARCLAYS BANK D.C.O.
 provide a first class service for all travellers.

TABLE 9 continued UGANDA/KENYA/TANZANIA-INTERCITY-COASTAL ROUTE

FRIDAY												SATURDAY												SUNDAY												DAY	
DC3	FRP	DC3	COM	DC3	FRP	FRP	FRP	FRP	FRP	DH89	COM	FRP	DH89	DC3	FRP	FRP	FRP	FRP	FRP	VI0	COM	DC3	DH89	FRP	DC3	AIRCRAFT	+										
EC	EC	EC	EC	EC	EC	EC	EC	EC	EC	EC	EC	EC	EC	EC	EC	EC	EC	EC	EC	EC	BR	EC	EC	EC	EC	SERVICE	-										
FLIGHT No.																										GMT											
CLASS																																					
051	301	063	709	029*	339	318	355	325	303	201	717	507	205	035	362	305	321	509	327	101	713	012	207	319	005		ENTEBBE	+3									
																												NAIROBI	+3								
																													ARUSHA	+3							
																													MOSHI	+3							
																													MALINDI	+3							
																													MOMBASA	+3							
																													TANGA	+3							
																													PEMBA	+3							
																													ZANZIBAR	+3							
																													DAR ES SALAAM	+3							

NOTES: 1. *EC.029 Thursdays and Fridays operate with effect from 6th January, 1966.
 2. See supplementary table for night tourist services.
 The shaded columns indicate fast "INTER-CITY" services.

NIGHT TOURIST SERVICES UNTIL 31.12.65

DAILY	DAY	MON/TUE/WED/THU/SUN
DC3	AIRCRAFT	DC3
EC	SERVICE	EC
0400	FLIGHT No.	0630
NIGHT TOURIST	CLASS	NIGHT TOURIST
0400	dep	NAIROBI
0545	arr	MOMBASA
		dep
		arr
		0815
		0630

Read Down Read Up

Special Night Tourist Fares
 Mombasa to Nairobi } Single Shs. 80/- Return Shs. 160/-
 Nairobi to Mombasa }

NOTE: These Night Tourist Services and Night Tourist Fares will be withdrawn after 31.12.65

TABLE 10 continued TANZANIA/KENYA/UGANDA-INTERCITY-COASTAL ROUTE

FRIDAY												SATURDAY												SUNDAY												DAY	
DC3	FRP	FRP	FRP	FRP	COM	FRP	DC3	FRP	DH89	DH89	FRP	DC3	FRP	COM	COM	FRP	DH89	FRP	FRP	COM	FRP	COM	FRP	COM	FRP	AIRCRAFT	+										
EC	EC	EC	EC	EC	EC	EC	EC	EC	EC	EC	EC	EC	EC	EC	EC	EC	EC	EC	EC	EC	EC	EC	EC	EC	EC	SERVICE	-										
FLIGHT No.																										GMT											
CLASS																																					
030	334	315	324	356	308	712	361	030	336	202	208	302	052	310	718	722	320	206	306	508	704	510					DAR ES SALAAM	+3									
																													ZANZIBAR	+3							
																													PEMBA	+3							
																													TANGA	+3							
																													MOMBASA	+3							
																													MALINDI	+3							
																													MOSHI	+3							
																													ARUSHA	+3							
																													NAIROBI	+3							
																													ENTEBBE	+3							

NOTE: 1. See Supplementary Table for Night Tourist Services.
 The shaded columns indicate fast "INTER-CITY" services.

Come—fly with me



make friends with

MARTELL

"White Label"
Dewar's
SCOTCH WHISKY
- it never varies

Sole Distributors

Jardin Limited

NAIROBI MOMBASA
KAMPALA DAR ES SALAAM

TABLE II KENYA/UGANDA/BURUNDI (TANZANIA)

DAY	MON.			TUE.			WED.				THU.			FRI.			SAT.		SUN.						
	DC3	FRP	V10	DC3	FRP	DC3	DC3	FRP	DC3	FRP	FRP	COM	DC3	FRP	COM	DC3	FRP	COM	DC3	FRP	COM	FRP			
AIRCRAFT	EC	EC	BA	EC	EC	EC	EC	EC	EC	EC	EC	EC	EC	EC	EC	EC	EC	EC	EC	EC	EC	EC			
SERVICE	013	311	168	037	313	017	064	371	065	313	320	706	039	361	708	013	063	315	712	015	361	718	722	320	
GMT	FLIGHT No.																								
CLASS	T	T	F/T/Y	T	T	T	T	T	T	T	T	F/T/Y	T	T	F/T/Y	T	T	F/T/Y	T	T	F/T/Y	T	T		
+3 NAIROBI	dep	0630	0915	2245	0730	0745	0945	1930	0700	0745	1150	2300	0630	0745	2300	0630	0745	1205	2300	0600	0745	2300	1100	1150	
+3 KISUMU	arr	0745					1100		0815				0745			0745									
	dep	0800					1115		0830				0800			0800									
+3 KITALE	arr								0910																
+3 TORORO	dep								0925																
	arr								0955																
+3 JINJA	dep								1010																
	arr	0850					1205		1040				0850												
	dep	0905					1230		1055				0905												
+3 ENTEBBE	arr	0935	1045	2350		0915	1250	2100		1125	0915	1320	0001	0935	0915	0001	0935		1335	0001	0835	0915	0001	1200	1320
	dep						0945							1000	0945										
+2 BUJUMBURA	arr																								
+3 MUSOMA	dep							1050																	
	arr							1105																	
+3 MWANZA	arr						0920		1150				1110												
	dep							1205					1130												
+3 DAR ES SALAAM	arr																								
+3 SERONERA	dep						1325						1455												
	arr							1300																	
	dep							1315																	
+3 ARUSHA	arr								1415										0845						
	dep								1430										0900						
+3 SERONERA	arr																								
	dep																								
+3 MWANZA	arr																								
	dep																								
+3 MUSOMA	arr																								
	dep																								
+3 ENTEBBE	arr																								

The shaded columns indicate the fast "INTER-CITY" services.

General Sales Agents

IN EAST AFRICA EAA REPRESENTS:

- ADEN AIRWAYS
- AER LINGUS
- AERLINTE EIREANN
- AIR CANADA
- AIR CEYLON
- AIR FRANCE
- AIR INDIA
- AIR NEW ZEALAND LTD.
- ALITALIA
- BAHAMAS AIRWAYS LIMITED
- BRITISH EUROPEAN AIRWAYS
- BRITISH OVERSEAS AIRWAYS CORPORATION
- BRITISH UNITED AIRWAYS (Passenger only)
- BRITISH WEST INDIAN AIRWAYS LIMITED
- CANADIAN PACIFIC AIR LINES LIMITED
- CENTRAL AFRICAN AIRWAYS
- CEKOSLOVENSKE AEROLINIE
- CYPRUS AIRWAYS LIMITED
- EMPRESA CONSOLIDADA CUBANA DE AVIACION
- ETHIOPIAN AIRLINES, S.C.
- GIBRALTAR AIRWAYS LIMITED
- JAPAN AIR LINES CO. LIMITED
- JUGOSLOVENSKE AERO TRANSPORT (JAT)
- KUWAIT AIRWAYS CORPORATION
- MALAYSIAN AIRWAYS LIMITED
- MALTA AIRWAYS
- MIDDLE EAST AIRLINES CO. S.A.
- PAKISTAN INTERNATIONAL AIRWAYS CORPORATION
- POLSKIE LINIE LOTNICZE-LOT
- QANTAS EMPIRE AIRWAYS LIMITED
- ROYAL NEPAL AIRLINES CORPORATION
- SABENA
- SCANDINAVIAN AIRLINES SYSTEM
- SUDAN AIRWAYS
- SWISSAIR
- THAI AIRWAYS INTERNATIONAL LTD.
- TRANS AUSTRALIA AIRWAYS
- UNITED ARAB AIRLINES
- WAAC NIGERIA LTD. (Nigeria Airways)

TABLE 12 BURUNDI/UGANDA/KENYA (TANZANIA)

DAY	MON.			TUE.			WED.			THU.			FRI.			SAT.			SUN.					
	V10	FRP	DC3	COM	FRP	DC3	DC3	FRP	FRP	DC3	FRP	COM	FRP	DC3	COM	DC3	DC3	FRP	COM	FRP	DC3	V10	DC3	FRP
+	SERVICE																							
GMT	FLIGHT No.																							
CLASS	F/T/Y T T T F/T/Y T T T T T T T F/T/Y T T T F/T/Y T T T T T T T																							
+3 ENTEBBE	dep 0945																							
+3 MUSOMA	arr 1105																							
+3 MWANZA	dep 1150																							
+3 SERONERA	arr 1300																							
+3 ARUSHA	arr 1315																							
+3 SERONERA	arr 1415																							
+3 DAR ES SALAAM	arr 1430																							
+3 MWANZA	arr 0940																							
+3 MUSOMA	arr 1305																							
+3 BUJUMBURA	arr 1340																							
+3 ENTEBBE	arr 1450																							
+3 JINJA	arr 0025 1130 1515																							
+3 TORORO	arr 0740 1000 1500																							
+3 KITALE	arr 0800 1000 1230 1415																							
+3 KISUMU	arr 1115 1245 1500 0815 1005 1415																							
+3 NAIROBI	arr 0920 1300 1825 0840 1130 1530 1810 0930 1120 1540 1545 1230 1545 1810 0915 1445 1545 0820 1545 1810 1805 1120 1505 1545																							

The shaded columns indicate the fast "INTER-CITY" services.

TABLE No. 13 UGANDA INTERNAL

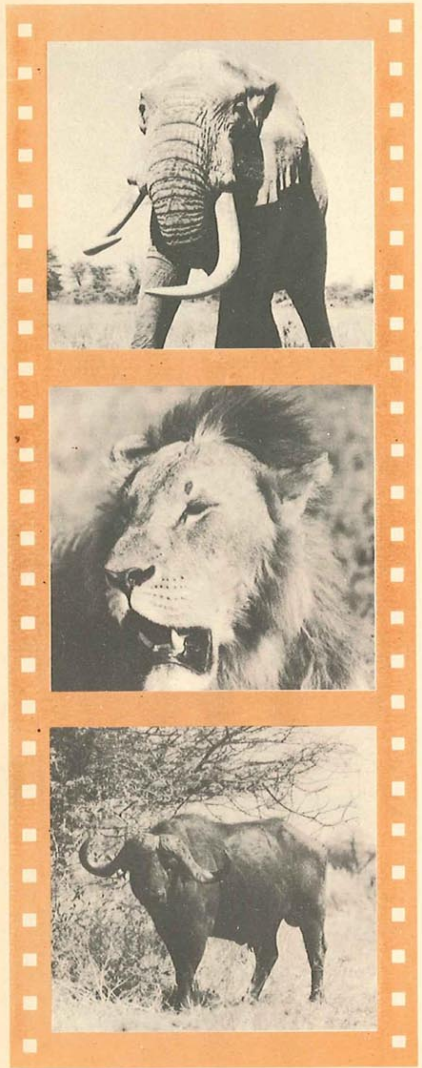
DAY	MON.	SUN.
+	AIRCRAFT DC3 DC3	
-	SERVICE EC EC	
GMT	FLIGHT No. 068 069	
CLASS	T T	
+3 ENTEBBE	dep 1000	0830
+3 KASESE	arr 1110	0940
+3 MURCHISON FALLS	arr 1115	0945
+3 ARUA	arr 1230	1100
+3 GULU	arr 1235	1105
+3 SOROTI	arr 1310	
+3 ENTEBBE	arr 1340	

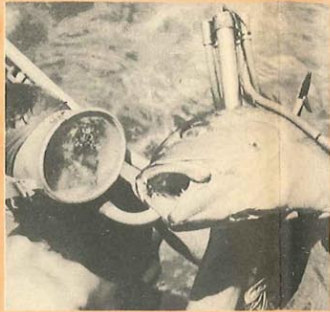
NOTE: These services have been suspended until further notice.

TABLE No. 14 UGANDA INTERNAL

DAY	THU.
+	AIRCRAFT DC3
-	SERVICE EC
GMT	FLIGHT No. 067
CLASS	T
+3 ENTEBBE	dep 0630
+3 SOROTI	arr 0730
+3 GULU	arr 0735
+3 ARUA	arr 0825
+3 MURCHISON FALLS	arr 0830
+3 KASESE	arr 0915
+3 ENTEBBE	arr 0920

NOTE: These services have been suspended until further notice.





*Fly to the
EAST
AFRICAN
COAST*



TABLE No. 15

TANZANIA—CENTRAL

DAY	MON.	TUE.	WED.	THU.	FRI.	SAT.
+ AIRCRAFT	DC3	DC3	DC3	DC3	DC3	DC3
— SERVICE	EC	EC	EC	EC	EC	EC
GMT FLIGHT No.	283	280	277	282	275	281
CLASS	T	T	T	T	T	T
+3 DAR ES SALAAM dep	0630	0630	0630	0730	0630	0630
+3 IRINGA arr	0805		0805		0805	0805
+3 NJOMBE arr	0825		0825		0825	0825
+3 SONGEA arr					0945	0945
+3 MBEYA arr	0940		0940		1120	1030
+3 TABORA arr	1000		1000		1140	1050
+3 MBEYA dep	1150					1240
+3 TABORA dep	1205					1300
+3 MWANZA arr	1315	0955		1055		1410
+3 TABORA arr	1400	1030		1145		1435
+3 MBEYA arr		1140		1255		
+3 SONGEA arr		1200		1315		
+3 NJOMBE arr		1350		1505		
+3 SAO HILL arr		1410		1525		
+3 IRINGA arr		1455	1115			
+3 DAR ES SALAAM arr		1515	1135			
+3 NJOMBE arr						
+3 SAO HILL arr			1240		1240	
+3 IRINGA arr			1300		1300	
+3 DAR ES SALAAM arr						
+3 IRINGA arr		1615	1335	1640	1335	
+3 DAR ES SALAAM arr		1635	1405	1700	1405	
+3 DAR ES SALAAM arr	1725	1810	1540	1835	1540	1800

TABLE 16 TANZANIA - SOUTHERN

DAY	MON.	TUE.					WED.	THU.				FRI.	SAT.	SUN.			
AIRCRAFT	DC3	DC3	DH89	DH89	DH89	DH89	DC3	DH89	DH89	DC3	DC3	DC3	DH89	DH89	DC3	DH89	DH89
SERVICE	EC	EC	EC	EC	EC	EC	EC	EC	EC	EC	EC	EC	EC	EC	EC	EC	EC
FLIGHT No.	274	272	213	212	215	214	279	213	212	273	279	271	213	212	270	215	214
CLASS	T	T	T	T	T	T	Y	T	T	T	T	T	T	T	T	T	T
+3 DAR ES SALAAM dep	1300	0730	0730		0945		1300	0730		0900	1300	0700		0730	0900	0945	
+3 MAFIA arr			0815					0815					0815				
+3 KILWA arr				0830		1100			0830					0830		1100	1115
+3 NACHINGWEA arr						1115						0835					1115
+3 LINDI arr							1425				1425	0850					
+3 MTWARA arr		0855					1445				1445					1045	
+3 SONGEA arr		0910														1100	
+3 MTWARA dep																1320	
+3 LINDI dep																1535	
+3 SONGEA dep																1540	
+3 MTWARA dep	1445	0935					1510	1045	1510	0935	0935					1540	
+3 LINDI dep	1505	0955					1530	1105	1530	0955							
+3 NACHINGWEA arr	1530							1130		1020						1605	
+3 DAR ES SALAAM arr	1545							1145		1035						1620	
+3 NACHINGWEA dep		1040															
+3 DAR ES SALAAM dep	1710	1230			0915	1230	1715		0915	1310	1715	1200		0915	1745		1230



TO THE PEOPLE OF EAST AFRICA

with a tradition of Banking second to none

Our shilling cheques available in denominations of shs. 100/- and shs. 200/- are encashable free of commission throughout East Africa.



NATIONAL AND GRINDLAYS BANK LIMITED

(INCORPORATED IN THE UNITED KINGDOM)
Bankers to the Governments of KENYA, UGANDA, ZANZIBAR & ADEN



THE ANSWER TO THE BUSINESSMAN'S PRAYER

FLY AND DRIVE

Fly there . . . and drive away the moment you arrive! Save yourself time, trouble and temper fit more in get more done. That's the way today's businessman's mind works thanks to car hire facilities. Simply fly to your appointment and on arrival be met by a rented car (self-drive or chauffeur-driven) in any of the following centres:

**NAIROBI KAMPALA (for Entebbe)
ARUSHA MOSHI DAR ES SALAAM
MALINDI MOMBASA**

For reservations and further information about

CAR HIRE FACILITIES

consult your travel agent or any East African Airways Office.



FARES AND RATES GUIDE

From						To						From						To					
From	Class	Validity	Single	Return	Cargo Per Kilo under 45 Kgs. and over	From	Class	Validity	Single	Return	Cargo Per Kilo under 45 Kgs. and over	From	Class	Validity	Single	Return	Cargo Per Kilo under 45 Kgs. and over	From	Class	Validity	Single	Return	Cargo Per Kilo under 45 Kgs. and over
<p>Dar es Salaam to</p> <p>Continued</p> <p>Mbeya 6 Months 390 702 3 20 2 40</p> <p>Mombasa 6 Months 215 387 1 65 1 30</p> <p>B/E 6 Days 248</p> <p>12/30 Days 287</p> <p>Spec. Exc. 172</p> <p>30 Days 195 351 1 45 1 10</p> <p>6 Months 290</p> <p>Spec. Exc. 172</p> <p>Moshi 6 Months 320 576 2 30 1 80</p> <p>B/E 6 Days 370</p> <p>Spec. Exc. 320</p> <p>Mtwara 6 Months 260 468 2 00 1 50</p> <p>B/E 6 Days 390</p> <p>Spec. Exc. 260</p> <p>Mwanza 6 Months 600 1080 4 90 3 70</p> <p>B/E 6 Days 630</p> <p>12/30 Days 800</p> <p>Nachingwea 6 Months 260 468 1 90 1 50</p> <p>Nairobi 6 Months 520 936</p> <p>6 Months 430 774 3 65 2 80</p> <p>B/E 6 Days 468</p> <p>12/30 Days 490</p> <p>Spec. Exc. 344</p> <p>(Central Route) 6 Months 800 1440</p> <p>Ndola 6 Months 600 1140</p> <p>13/45 Days 750</p> <p>Njombe 6 Months 350 630 2 90 2 20</p> <p>Paris 12 Months 4660 8854</p> <p>Y 12 Months 2660 5054</p> <p>Pemba 6 Months 125 225 0 95 0 80</p> <p>Rome 12 Months 4300 8170</p> <p>Spec. Exc. 792 1505 5 00 3 80</p> <p>Salisbury 6 Months 660 1254</p> <p>13/45 Days 830</p> <p>Sao Hill 6 Months 320 576 2 40 1 80</p> <p>Songea 6 Months 430 774 3 50 2 70</p> <p>Tabora 6 Months 430 774 3 50 2 70</p> <p>Tanga 6 Months 125 225 0 95 0 80</p> <p>B/E 6 Days 150</p> <p>Spec. Exc. 125</p> <p>Zanzibar 6 Months 55 99 0 45 0 40</p> <p>B/E 6 Days 70</p> <p>Spec. Exc. 55</p>																							
<p>Entebbe to</p> <p>Addis Ababa 12 Months 1262 2398</p> <p>7 days/1 Mth. 970 1843</p> <p>Arua 6 Months 215 387 1 70 1 30</p> <p>Arusha 6 Months 410 738 3 30 2 50</p> <p>Benghazi 12 Months 2820 5358</p> <p>12 Months 1760 3344 10 80 8 10</p> <p>Bombay 12 Months 2700 5130</p> <p>Y 12 Months 1780 3382</p> <p>Bujumbura 12 Months 344 554</p> <p>Cairo 12 Months 2180 4142</p> <p>F 12 Months 1500 2850 9 60 7 20</p> <p>Dar es Salaam 6 Months 900 1620</p> <p>6 Months 740 1332 6 20 4 70</p> <p>B/E 6 Days 850</p> <p>12/30 Days 870</p> <p>Spec. Exc. 592</p> <p>1 Day 270</p> <p>Entebbe 12 Months 4220 8018</p> <p>Frankfurt 12 Months 2500 4750</p> <p>Gulu 6 Months 190 342 1 60 1 20</p> <p>Iringa 6 Months 600 1080 4 90 3 70</p> <p>Jinja 6 Months 65 117 0 50 0 40</p> <p>Karachi 12 Months 2540 4826</p> <p>Y 12 Months 1680 3192</p> <p>Kasese 6 Months 170 306 1 20 0 90</p>																							
<p>Entebbe to</p> <p>Continued</p> <p>Khartoum 12 Months 1300 2470</p> <p>Kitumu 12 Months 900 1710 6 00 4 50</p> <p>Kitale 6 Months 170 306 1 35 1 10</p> <p>London 6 Months 195 351 1 45 1 10</p> <p>Y 12 Months 4240 8056</p> <p>19/45 Days 2500 4750 13 90 10 40</p> <p>Malindi 6 Months 428</p> <p>B/E 6 Days 620</p> <p>12/30 Days 600</p> <p>Spec. Exc. 428</p> <p>Mbeya 6 Months 580 1044 4 70 3 60</p> <p>Mombasa 6 Months 620</p> <p>12/30 Days 600</p> <p>Murchison Falls 6 Months 190 342 1 60 1 20</p> <p>Musoma 6 Months 280 504 2 00 1 50</p> <p>Mwanza 6 Months 230 414 1 55 1 20</p> <p>Nairobi 6 Months 380 684</p> <p>6 Months 310 558 2 60 2 00</p> <p>B/E 6 Days 360</p> <p>12/30 Days 380</p> <p>Spec. Exc. 248</p> <p>Ndola 6 Months 1006 1912 6 00 4 50</p> <p>14/30 Days 1509</p> <p>Paris 12 Months 4200 7980</p> <p>Y 12 Months 2500 4750</p> <p>Rome 12 Months 3800 7220</p> <p>Y 12 Months 2220 4218 12 00 9 00</p> <p>Salisbury 6 Months 1200 2280 7 60 5 70</p> <p>14/30 Days 1800</p> <p>Seronera 6 Months 330 594 2 40 1 80</p> <p>Soroti 6 Months 125 225 1 00 0 80</p> <p>Tabora 6 Months 330 594 2 70 2 10</p> <p>Tororo 6 Months 135 243 1 00 0 80</p> <p>Frankfurt 12 Months 2621 4980</p> <p>Blantyre 12 Months 1512 2873</p> <p>Cairo 12 Months 1132 2151</p> <p>Dar es Salaam 12 Months 773 1469</p> <p>Y 12 Months 2621 4980</p> <p>Entebbe 12 Months 1501 2852</p> <p>Y 12 Months 2364 4492</p> <p>London 12 Months 1400 2660</p> <p>F 12 Months 252 479</p> <p>Nairobi 12 Months 191 363</p> <p>F 12 Months 2464 4682</p> <p>Y 12 Months 1423 2704</p> <p>Ndola 12 Months 2565 4874</p> <p>Y 12 Months 1490 2831</p> <p>Paris 12 Months 330 627</p> <p>Salisbury 12 Months 240 456</p> <p>Y 12 Months 2711 5151</p> <p>Y 12 Months 1512 2873</p> <p>Gulu 6 Months 100 180 0 70 0 60</p> <p>Arusha 6 Months 190 342 1 60 1 20</p> <p>Kampala 6 Months 210 378 1 80 1 40</p> <p>Kasese 6 Months 290 522 2 05 1 60</p> <p>Murchison Falls 6 Months 100 180 0 70 0 60</p> <p>Soroti 6 Months 110 198 0 80 0 60</p> <p>Iringa 6 Months 260 468 2 00 1 50</p> <p>Dar es Salaam 6 Months 600 1080 4 90 3 70</p> <p>Kampala 6 Months 620 1116 5 10 3 90</p> <p>Mbeya 6 Months 200 360 1 40 1 10</p> <p>Mwanza 6 Months 440 792 3 60 2 70</p> <p>Nairobi 6 Months 600 1080 4 90 3 70</p> <p>Njombe 6 Months 150 270 1 10 0 90</p> <p>Sao Hill 6 Months 60 108 0 50 0 40</p> <p>Songea 6 Months 230 414 1 70 1 30</p> <p>Tabora 6 Months 300 540 2 30 1 80</p>																							
<p>Jinja to</p> <p>Entebbe 6 Months 65 117 0 50 0 40</p> <p>Kampala 6 Months 85 153 0 70 0 60</p> <p>Kasese 6 Months 230 414 1 70 1 30</p> <p>Kitumu 6 Months 120 216 0 90 0 70</p> <p>Kitale 6 Months 135 243 1 00 0 80</p> <p>Mwanza 6 Months 400</p> <p>B/E 6 Days 290 522 2 20 1 70</p> <p>Nairobi 6 Months 360</p> <p>B/E 6 Days 360</p> <p>Tororo 6 Months 80 144 0 60 0 50</p> <p>Kampala 6 Months 235 423 1 90 1 50</p> <p>Arusha 6 Months 430 774 3 50 2 70</p> <p>Dar es Salaam 6 Months 920 1656</p> <p>6 Months 760 1368 6 40 4 80</p> <p>B/E 6 Days 886</p> <p>12/30 Days 906</p> <p>Spec. Exc. 628</p> <p>Gulu 6 Months 210 378 1 80 1 40</p> <p>Iringa 6 Months 620 1116 5 10 3 90</p> <p>Jinja 6 Months 85 153 0 70 0 60</p> <p>Kampala 1 Day 306</p> <p>Kasese 6 Months 190 342 1 40 1 10</p> <p>Kitumu 6 Months 190 342 1 55 1 20</p> <p>Kitale 6 Months 215 387 1 65 1 30</p> <p>Malindi 6 Months 636</p> <p>12/30 Days 636</p> <p>Spec. Exc. 464</p> <p>Mbeya 6 Months 600 1080 4 90 3 70</p> <p>B/E 6 Days 656</p> <p>12/30 Days 636</p> <p>Spec. Exc. 464</p> <p>Murchison Falls 6 Months 210 378 1 80 1 40</p> <p>Musoma 6 Months 300 540 2 20 1 70</p> <p>Mwanza 6 Months 250 450 1 75 1 40</p> <p>Nairobi 6 Months 460 720</p> <p>6 Months 330 594 2 80 2 10</p> <p>B/E 6 Days 396</p> <p>12/30 Days 416</p> <p>Spec. Exc. 284</p> <p>Seronera 6 Months 350 630 2 60 2 00</p> <p>Soroti 6 Months 145 261 1 20 0 90</p> <p>Tabora 6 Months 350 630 2 90 2 20</p> <p>Tororo 6 Months 155 279 1 20 0 90</p> <p>Karachi 12 Months 1393 2647</p> <p>Addis Ababa 12 Months 955 1815</p> <p>Aden 12 Months 987 1876</p> <p>Y 12 Months 650 1235 3 85 2 90</p> <p>Blantyre 12 Months 2134 4055</p> <p>Y 12 Months 1480 2812</p> <p>Bombay 12 Months 246 468</p> <p>F 12 Months 189 360</p> <p>Dar es Salaam 12 Months 1747 3320 1 60 1 20</p> <p>Y 12 Months 1160 2204</p> <p>Entebbe 12 Months 1694 3219</p> <p>Y 12 Months 1120 2128</p> <p>Nairobi 12 Months 1526 2900</p> <p>Y 12 Months 1006 1912 5 85 4 40</p> <p>Ndola 12 Months 2067 3928</p> <p>F 12 Months 1467 2788</p> <p>Salisbury 12 Months 2267 4308</p> <p>Y 12 Months 1600 3040</p> <p>Kasese 6 Months 260 468 1 85 1 40</p> <p>Arusha 6 Months 170 306 1 20 0 90</p> <p>Entebbe 6 Months 230</p> <p>Gulu 6 Months 290 522 2 05 1 60</p> <p>Jinja 6 Months 230 414 1 70 1 30</p> <p>Kampala 6 Months 347</p> <p>6 Days 342</p> <p>1 Day 266</p>																							

F First Class Y Economy Class B/E Business Excursion * Bank and Public Holiday Excursion. Details on application.
 T Tourist Class † Limited stopover facilities. Details on application. ‡ Stopovers en route not permitted.
 † Excursion Fare. Details on application. § Special Day Excursion valid for Day of travel only on services EC. 067/EC. 068

All Special and Business Excursion Fares between points in East Africa are saleable only within East Africa.

FARES AND RATES GUIDE

From	Class	Validity	Single	Return	Cargo Per Kilo under 45 Kgs.	Cargo Per Kilo 45 Kgs. and over	From	Class	Validity	Single	Return	Cargo Per Kilo under 45 Kgs.	Cargo Per Kilo 45 Kgs. and over	From	Class	Validity	Single	Return	Cargo Per Kilo under 45 Kgs.	Cargo Per Kilo 45 Kgs. and over																																																	
Kasese Continued Kisumu Malindi Mombasa Murchison Falls Nairobi Soroti Tororo	T	6 Months	300	540	2 50	1 90	London Benghazi Blantyre Cairo Dar es Salaam Entebbe Frankfurt Khartoum Kisumu Lindi Mombasa Mtwara Nairobi Ndola Paris Rome Salisbury Tabora Tanga Zanzibar	F	12 Months	72 16	138 7			Malindi Continued Dar es Salaam Entebbe Kampala Lushoto Mombasa Mombo Moshi Nairobi Tanga Zanzibar	T	6 Months	285	513	2 10	1 60	Mbeya Dar es Salaam Entebbe Iringa Kampala Mwanza Nairobi Njombe Sao Hill Songea Tabora	T	6 Months	390	702	3 20	2 40																																										
		12/30 Days	820	1 480	—	—			12 Months	51 9	97 16	—	—			6 Months	580	1044	4 70	3 60			6 Months	580	1044	4 70	3 60																																										
	Kilwa Dar es Salaam Lindi Mafia Mtwara Nachingwea	T	6 Months	150	270	1 10		0 90	Lushoto Arusha Dar es Salaam Malindi Mombasa Moshi Nairobi Pemba Tanga Zanzibar	T	12 Months	212	402 16				Mogadishu Aden Nairobi	T	12 Months	591		1123			Mombasa Aden Arusha Blantyre Cairo Dar es Salaam Entebbe Frankfurt Kampala Khartoum	T	12 Months	591	1123			Mombasa Aden Arusha Blantyre Cairo Dar es Salaam Entebbe Frankfurt Kampala Khartoum	F	12 Months	1220	2318	5 40	4 00	T	6 Months	215	387	1 65	1 30	T	6 Months	220	396	1 80	1 40	T	6 Months	215	387	1 65	1 30													
			6 Months	85	153	0 55		0 50			6 Months	215	387		1 65	1 30			6 Months	215		387	1 65	1 30			6 Months	215	387	1 65	1 30			6 Months	215	387	1 65	1 30																															
		Kisumu Cairo Entebbe Frankfurt Jinja Kampala Kasese Khartoum Kitale London Malindi Mombasa Mwanza Nairobi Rome Tororo	F	12 Months	2360	4464		—		—	Mafia Dar es Salaam Kiwa Lindi Mombasa Mtwara Nachingwea Nairobi Pemba Tanga Zanzibar	T	12 Months		1640	3116		9 80	7 40	Mafia Dar es Salaam Kiwa Lindi Mombasa Mtwara Nachingwea Nairobi Pemba Tanga Zanzibar		T	6 Months	170		306	1 35	1 10	Mafia Dar es Salaam Kiwa Lindi Mombasa Mtwara Nachingwea Nairobi Pemba Tanga Zanzibar	F	12 Months		4340	8246	—	—	Mafia Dar es Salaam Kiwa Lindi Mombasa Mtwara Nachingwea Nairobi Pemba Tanga Zanzibar	T	12 Months	220	396	1 80	1 40	Mafia Dar es Salaam Kiwa Lindi Mombasa Mtwara Nachingwea Nairobi Pemba Tanga Zanzibar	T	12 Months	220	396	1 80	1 40	Mafia Dar es Salaam Kiwa Lindi Mombasa Mtwara Nachingwea Nairobi Pemba Tanga Zanzibar	F	12 Months	220	396	1 80	1 40	T	6 Months	215	387	1 65	1 30	T	6 Months	215	387	1 65	1 30
				6 Months	85	153		0 55		0 50			6 Months		215	387		1 65	1 30				6 Months	215		387	1 65	1 30			6 Months		215	387	1 65	1 30			6 Months	215	387	1 65	1 30																										

F First Class
T Tourist Class

Y Economy Class

B/E Business Excursion

† Limited stopover facilities. Details on application.

* Bank and Public Holiday Excursion. Details on application.

‡ Stopovers en route not permitted.

● Excursion Fare. Details on application.

All Special and Business Excursion Fares between points in East Africa are saleable only within East Africa.

FARES AND RATES GUIDE

From	Class	Validity	Single	Return	Cargo Per Kilo under 45 Kgs.	Cargo Per Kilo 45 Kgs. and over	From	Class	Validity	Single	Return	Cargo Per Kilo under 45 Kgs.	Cargo Per Kilo 45 Kgs. and over	From	Class	Validity	Single	Return	Cargo Per Kilo under 45 Kgs.	Cargo Per Kilo 45 Kgs. and over		
Tabora	to		Shs.	Shs.	Sh. Ct.	Sh. Ct.	Tanga	to		Shs.	Shs.	Sh. Ct.	Sh. Ct.	Zanzibar	to		Shs.	Shs.	Sh. Ct.	Sh. Ct.		
Continued							Continued							Continued								
Entebbe	T	6 Months	330	594	—	2 10	Mombasa	T	6 Months	95	171	0 75	0 60	Frankfurt	F	12 Months	4680	8892	—	—	—	—
Frankfurt	F	12 Months	4520	8588	2 70	—	Spec. Exc.	T	B/E 6 Days	—	95	—	—	Khartoum	F	12 Months	2680	5092	—	—	—	—
Iringa	T	6 Months	300	540	2 30	1 80	Mombasa	T	6 Months	75	135	0 50	0 40	Lindi	F	12 Months	1440	2736	8 90	6 70	—	—
Kampala	T	6 Months	350	630	2 90	2 20	Moshi	T	6 Months	195	351	1 45	1 10	London	F	12 Months	265	477	2 00	1 50	—	—
Khartoum	F	12 Months	1940	3686	—	—	Spec. Exc.	T	B/E 6 Days	—	220	—	—	Lusaka	T	13/45 Days	4700	8930	—	—	—	—
London	T	12 Months	1340	2546	8 30	6 20	Mtwara	T	6 Months	340	612	2 90	2 20	Lushoto	T	6 Months	170	306	1 25	1 00	—	—
Mbeys	F	12 Months	4540	8626	—	—	Nachingwea	T	6 Months	320	576	2 70	2 10	Mafia	T	30 Days	—	275	—	—	—	—
Mwanga	T	6 Months	280	504	2 20	1 70	Nairobi	T	12/30 Days	—	370	—	—	Malindi	T	6 Months	135	243	0 95	0 80	—	—
Nairobi	T	6 Months	370	666	3 00	2 30	Pemba	T	6 Months	60	108	0 45	0 40	Mombasa	T	Spec. Exc.	—	240	—	—	—	—
Njombe	T	12/30 Days	340	612	2 80	2 10	Rome	F	12 Months	4240	8056	—	—	Mombasa	T	6 Months	170	306	1 35	1 10	—	—
Rome	F	12 Months	4120	7828	—	9 80	Zanzibar	†	6 Months	90	162	0 60	0 50	Mombasa	T	B/E 6 Days	—	198	—	—	—	—
Tanga	to		Shs.	Shs.	Sh. Ct.	Sh. Ct.	†	Spec. Exc.	—	105	—	—	Mombasa	T	Spec. Exc.	—	170	—	—	—	—	
Aden	F	12 Months	1340	2546	—	—	‡	Spec. Exc.	—	90	—	—	Mombasa	T	Spec. Exc.	—	170	—	—	—	—	
Arusha	T	12 Months	1035	1967	6 10	4 60	Tororo	to		Shs.	Shs.	Sh. Ct.	Sh. Ct.	Mombasa	T	6 Months	145	261	1 05	0 80	—	—
Arusha	T	6 Months	230	414	1 80	1 40	Entebbe	T	6 Months	135	243	1 00	0 80	Mombasa	T	30 Days	—	230	—	—	—	—
Cairo	F	12 Months	2780	5282	—	—	Jinja	T	6 Months	80	144	0 60	0 50	Mombasa	T	Spec. Exc.	—	145	—	—	—	—
Dar es Salaam	Y	12 Months	1960	3724	11 00	8 20	Kampala	T	6 Months	155	279	1 30	0 90	Mombasa	T	6 Months	270	486	2 00	1 50	—	—
Dar es Salaam	T	6 Months	125	225	0 95	0 80	Kisumu	T	6 Months	110	198	0 80	0 60	Mombasa	T	B/E 6 Days	—	320	—	—	—	—
Frankfurt	T	B/E 6 Days	—	150	—	—	Kitale	T	6 Months	65	117	0 50	0 40	Mombasa	T	Spec. Exc.	—	315	—	—	—	—
Frankfurt	F	12 Months	4660	8854	—	—	Nairobi	T	6 Months	250	450	1 85	1 40	Mombasa	T	6 Months	315	567	2 20	1 70	—	—
Frankfurt	Y	12 Months	2660	5054	—	—	Zanzibar	to		Shs.	Shs.	Sh. Ct.	Sh. Ct.	Mombasa	T	6 Months	395	711	3 25	2 50	—	—
Frankfurt	T	12 Months	1940	3686	—	—	Aden	F	12 Months	1440	2736	—	—	Mombasa	T	B/E 6 Days	—	460	—	—	—	—
Frankfurt	T	6 Months	1300	2622	8 40	6 30	Arusha	T	12 Months	1110	2109	6 70	5 00	Mombasa	T	12/30 Days	—	430	—	—	—	—
Frankfurt	T	6 Months	310	558	2 60	2 00	Arusha	T	6 Months	315	567	2 30	1 80	Mombasa	T	Spec. Exc.	—	316	—	—	—	—
Frankfurt	F	12 Months	4680	8892	—	—	Blantyre	T	6 Months	545	1036	4 20	3 20	Mombasa	T	6 Months	655	1245	—	—	—	—
Frankfurt	Y	12 Months	2660	5054	15 00	11 20	Cairo	T	13/45 Days	2840	5396	—	—	Mombasa	T	13/45 Days	—	162	—	—	—	—
Frankfurt	T	19/45 Days	—	4240	—	—	Cairo	F	12 Months	2020	3838	11 10	8 40	Mombasa	T	6 Months	90	162	0 60	0 50	—	—
Lushoto	T	6 Months	100	180	0 70	0 60	Cairo	T	6 Months	55	99	0 45	0 40	Mombasa	T	Spec. Exc.	—	80	—	—	—	—
Mafia	T	Spec. Exc.	—	120	—	—	Dar es Salaam	T	12 Months	2020	3838	—	—	Mombasa	T	6 Months	4300	8170	—	—	—	—
Malindi	T	6 Months	215	387	1 55	1 20	Dar es Salaam	T	6 Months	55	99	0 45	0 40	Mombasa	T	12 Months	2520	4788	13 50	10 10	—	—
	T	6 Months	160	288	1 20	0 90	Dar es Salaam	T	B/E 6 Days	—	70	—	—	Mombasa	T	6 Months	715	1359	5 50	4 10	—	—
	T	B/E 6 Days	—	180	—	—	Dar es Salaam	T	Spec. Exc.	—	55	—	—	Mombasa	T	13/45 Days	—	900	—	—	—	—
	T	Spec. Exc.	—	160	—	—	Dar es Salaam	T	Spec. Exc.	—	55	—	—	Mombasa	T	6 Months	—	162	—	—	—	—
	T	Spec. Exc.	—	160	—	—	Dar es Salaam	T	Spec. Exc.	—	55	—	—	Mombasa	T	B/E 6 Days	—	105	—	—	—	—

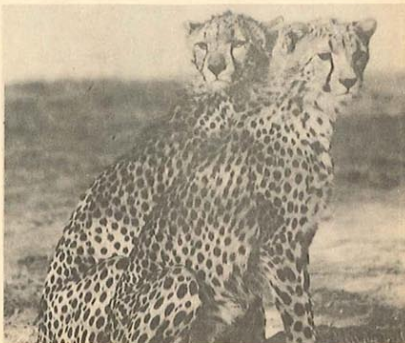
F First Class
T Tourist Class

Y Economy Class

B/E Business Excursion
† Limited stopover facilities. Details on application.

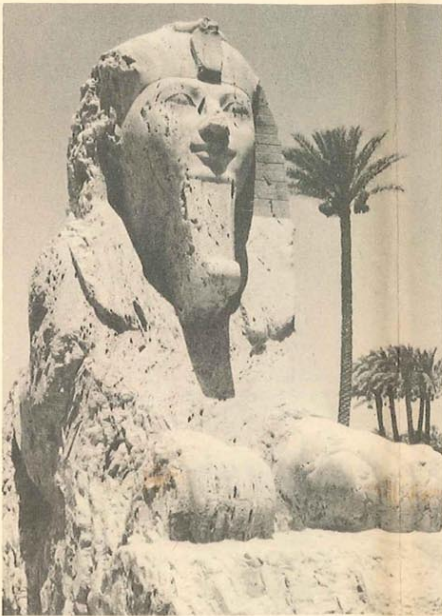
* Bank and Public Holiday Excursion. Details on application.
‡ Stopovers en route not permitted.
● Excursion Fare. Details on application.

All Special and Business Excursion Fares between points in East Africa are saleable only within East Africa.



FUN AND GAME IN EAST AFRICA

CAIRO



ROME

PARIS



STOPOVER EN ROUTE TO LONDON

EAST AFRICAN AIRWAYS OFFICES AND HANDLING AGENTS

TOWN	OFFICE	ADDRESS	TELEPHONE	TELEGRAMS
ADDIS ABABA (Ethiopia)	Ethiopian Airlines Inc. East African Airways Representative	Haile Selassie I Square Ato Tesfaye Kedjela Bldg., 2nd floor, Ras Mekonen Godana, P.O. Box 3381	13300 44258	Ethair Airservice
ADEN (S. Arabian Federation)	Aden Airways Ltd. East African Airways Representative	Queen Arwa Road, Crater Room 46, P & O House, Tawahi, P.O. Box 1189	2224/5 & 2258 4436	Adenair Airservice
ARUA (Uganda)	East African Airways Agent	c/o Arua Bus Syndicate Ltd., P.O. Box 40	—	Airservice
ARUSHA (Tanzania)	East African Airways Agent	c/o Coopers (Travel) Ltd., P.O. Box 142	2001	Airservice
BENGHAZI (Libya)	Mitchell Cotts & Co. (Libya) Ltd.	18, Sharia Omar Mukhtar, P.O. Box 202	2451	Cottseair
BLANTYRE (Malawi)	Central African Airways	Robins Road, P.O. Box 84	314/5	Centralair
BOMBAY (India)	Air India East African Airways Representative	New India Assurance Bldg., Mahatma Gandhi Rd., Fort c/o Air India, as above	25-9191 25-9191	Airindia (PG) Airservice
BUJUMBURA (Burundi)	Sabena Belgian World Airlines	10, Chaussee Prince Rwagasore	2150/2553	Airsabena
CAIRO (U.A.R.)	British Overseas Airways Corporation East African Airways Representative	I, Sharia El Bustan c/o British Overseas Airways Corporation, as above	71447/1 71447/1	Speedbird Airservice
DAR ES SALAAM (Tanzania)	East African Airways	Airways Terminal, Tancot House, City Drive, P.O. Box 543	—	—
ELDORET (Kenya)	East African Airways Agent	c/o Hughes Ltd., P.O. Box 85	85 & 292	Airservice
ENTEBBE (Uganda)	East African Airways	Entebbe Airport, P.O. Box 68	516	Airservice
FRANKFURT (Germany)	British Overseas Airways Corporation East African Airways Representative	Kaiserstrasse 26 c/o British Overseas Airways Corporation, as above	280891 285449	Speedbird Speedbird
GULU (Uganda)	East African Airways Agent	c/o H. S. Patel & Co. Ltd., P.O. Box 15	15	Airservice
IRINGA (Tanzania)	East African Airways Agent	c/o Manning Estates (J. G. de Brito), P.O. Box 69	35	Airservice
JINJA (Uganda)	East African Airways Agent	c/o Equatorial Agencies Ltd., P.O. Box 556	2492	Airservice
KAMPALA (Uganda)	East African Airways	Airways House, cnr. Harcourt Avenue and Colville Street, P.O. Box 523	54265	Airservice
KASESE (Uganda)	East African Airways Agent	c/o Kilembe Mines Ltd., P.O. Box 1	Kilembe 8	Kilemines
KARACHI (Pakistan)	East African Airways Pakistan International Airlines	Central Hotel Bldg., Club Road As above	Res. 54378 Exch. 51061	Airservice Pakintair
KILWA (Tanzania)	East African Airways Agent	c/o Central African Transport Co., P.O. Kilwa	—	Airservice
KISUMU (Kenya)	East African Airways Agent	c/o Kisumu Travel Service, P.O. Box 764	64	Airservice
KITALE (Kenya)	East African Airways Agent	c/o Hughes (Kitale) Ltd., P.O. Box 97	44	Airservice
LINDI (Tanzania)	East African Airways Agent	c/o Twentsche Overseas Trading Co. Ltd., P.O. Box 33	161	Airservice
LONDON (England)	British Overseas Airways Corporation East African Airways Representative	Airways Terminal, Buckingham Palace Road, S.W.1. Room 112, Grand Buildings, Trafalgar Square, W.C.2.	Victoria 2323 Trafalgar 1565	Speedbird Estafica
LUSHOTO/MOMBO (Tanzania)	East African Airways Agent	c/o Lushoto Provision Stores, P.O. Box 48	45	Provision Store
MAFIA (Tanzania)	East African Airways Agent	c/o H. J. Stanley & Sons Ltd., P.O. Box 32	—	Stanleysons
MALINDI (Kenya)	East African Airways Agent	c/o E. African Tourist Agency Ltd., P.O. Box 352	95	Airservice
MBEYA (Tanzania)	East African Airways	Standard Building, Main Avenue, P.O. Mbeya	61	Airservice
MOMBASA (Kenya)	East African Airways	Airways Terminal, Kilindini Road, P.O. Box 677	6251	Airservice
MOSHI (Tanzania)	East African Airways Agent	c/o Enslies Ltd., P.O. Box 29	2701	Airservice
MTWARA (Tanzania)	East African Airways Agent	c/o Twentsche Overseas Trading Co. Ltd., P.O. Box 55	47	Airservice
MUSOMA (Tanzania)	East African Airways Agent	c/o Musoma Emporium (Tanganyika) Ltd., P.O. Box 19	—	Airservice
MWANZA (Tanzania)	East African Airways	Post Street, P.O. Box 592	2249	Airservice
NACHINGWEA (Tanzania)	East African Airways Agent	c/o Central African Transport Co., P.O. Box 12	5	Airservice
NAIROBI (Kenya)	East African Airways	Mackinnon's Building, Kenyatta Avenue, P.O. Box 1010	26451	Airservice
NDOLA (Zambia)	Central African Airways	Airways Terminal, The Broadway, P.O. Box 184	2439, 3225, 2763	Centralair
NJOMBE (Tanzania)	East African Airways Agent	c/o Tanganyika Wattle Co. Ltd., P.O. Njombe	6	Airservice
PARIS (France)	British European Airways East African Airways Representative	129, Avenue Champs Elysees 1, Rue de Berri	Richelieu 4149 Elysees 83 -- 10	Bealine Speedbird
PEMBA (Tanzania)	East African Airways Agent	c/o Smith Mackenzie & Co. Ltd., P.O. Box 92	62	—
ROME (Italy)	East African Airways British European Airways	Via Barberini 69 Hotel Quirinale, Via Nazionale 6a	480400, 460803 489956	Airservice Bealine
SALISBURY (Rhodesia)	Central African Airways	Airways Terminal, Third Street/Speke Avenue P.O. Box 1319	61471	Centralair
SAO HILL (Tanzania)	East African Airways Representative	104, The Travel Centre, Third Street/Speke Avenue	22660	Airservice
SONGEA (Tanzania)	East African Airways Agent	John's Corner, Sao Hill Airfield, P.O. Box 22	—	Airservice
SOROTI (Uganda)	East African Airways Agent	c/o Twentsche Overseas Trading Co. Ltd., P.O. Box 15	—	Airservice
TABORA (Tanzania)	East African Airways Agent	c/o Hasham Mitha & Co. Ltd., P.O. Box 54	10	Airservice
TANGA (Tanzania)	East African Airways Agent	c/o A. J. Nazareth, Ltd., P.O. Box 115	31	Airservice
TORORO (Uganda)	East African Airways	Airways Terminal, Ngamiani Street, P.O. Box 660	7171/2	Airservice
ZANZIBAR (Tanzania)	East African Airways Agent East African Airways	c/o Bawa Travel Service, P.O. Box 16 Airways Terminal, Vuga Road, P.O. Box 773	326 2181	Airservice Airservice

EAST AFRICAN AIRWAYS, HEAD OFFICE: P.O. BOX 19002, EMBAKASI, NAIROBI AIRPORT. TEL: 82222. TELEGRAMS: AIRSERVICE