

YOU MAY BOOK THROUGH

NO BOOKING FEE

CALENDAR 1964/5

JULY					AUGUST					
S	5	12	19	26	S	2	9	16	23	30
M	6	13	20	27	M	3	10	17	24	31
T	7	14	21	28	T	4	11	18	25	
W	8	15	22	29	W	5	12	19	26	
T	9	16	23	30	T	6	13	20	27	
F	10	17	24	31	F	7	14	21	28	
S	11	18	25		S	8	15	22	29	

SEPTEMBER					OCTOBER				
S	6	13	20	27	S	4	11	18	25
M	7	14	21	28	M	5	12	19	26
T	8	15	22	29	T	6	13	20	27
W	9	16	23	30	W	7	14	21	28
T	10	17	24		T	8	15	22	29
F	11	18	25		F	9	16	23	30
S	12	19	26		S	10	17	24	31

NOVEMBER					DECEMBER					
S	1	8	15	22	29	S	6	13	20	27
M	2	9	16	23	30	M	7	14	21	28
T	3	10	17	24		T	8	15	22	29
W	4	11	18	25		W	9	16	23	30
T	5	12	19	26		T	10	17	24	31
F	6	13	20	27		F	11	18	25	
S	7	14	21	28		S	12	19	26	

JANUARY					FEBRUARY					
S	3	10	17	24	31	S	7	14	21	28
M	4	11	18	25		M	1	8	15	22
T	5	12	19	26		T	2	9	16	23
W	6	13	20	27		W	3	10	17	24
T	7	14	21	28		T	4	11	18	25
F	8	15	22	29		F	5	12	19	26
S	9	16	23	30		S	6	13	20	27

MARCH					APRIL					
S	7	14	21	28	S	4	11	18	25	
M	1	8	15	22	29	M	5	12	19	26
T	2	9	16	23	30	T	6	13	20	27
W	3	10	17	24	31	W	7	14	21	28
T	4	11	18	25		T	1	8	15	22
F	5	12	19	26		F	2	9	16	23
S	6	13	20	27		S	3	10	17	24

MAY					JUNE					
S	2	9	16	23	30	S	6	13	20	27
M	3	10	17	24	31	M	7	14	21	28
T	4	11	18	25		T	1	8	15	22
W	5	12	19	26		W	2	9	16	23
T	6	13	20	27		T	3	10	17	24
F	7	14	21	28		F	4	11	18	25
S	8	15	22	29		S	5	12	19	26

EAST AFRICAN AIRWAYS

EAST AFRICAN AIRWAYS

TIME TABLE

TIME TABLE

TIMETABLE
COLOUR SEQUENCE
JAN. ISSUE — GREEN
APRIL " — BLUE
JULY " — RED
OCT. " — TAN



EFFECTIVE DATE 1st JULY 1964
NEXT ISSUE 18th OCTOBER 1964

TRAVEL ADVICE

Some recommendations

- Save money by purchasing all tickets for your journey before departure.
- See your EAA-APPOINTED TRAVEL AGENT. He is there to help and will offer you complete trip planning advice at no extra cost.
- Let us know your contact address or telephone number up to departure time.
- Book your hotel accommodation at destination well in advance and check if accommodation will be provided at transfer points.
- Pack all you need during flight in a small cabin bag. All other articles should be packed in registered baggage, one case containing all that is required at night-stops.
- Keep your Cabin baggage to a minimum.
- Carry your Passport, Health Certificate and Currency with you. Do not pack them.
- Carry any valuables, such as jewellery, personally whenever possible.
- Check the "Message Board" on arrival. If friends are meeting you, give them your service and flight number.



PASSENGER INFORMATION

YOUR TICKET AND CONDITIONS OF CONTRACT

Your ticket is issued subject to these Regulations and to our General Conditions of Carriage of Passengers and Baggage. These conditions are available in all E A A offices and extracts can be found in your ticket.

RETURN AND ONWARD BOOKINGS

You are requested to check your return journey and onward reservations as soon as possible after your arrival at destination or transfer point, particularly attendance and departure times.

STOPOVERS

You may break your journey at one or more places en route and retain the benefit of the through fare, except where precluded by Government regulations, or on some Excursion Fares, provided notice is given before commencing the journey.

CHILDREN AND INFANTS

An infant under two accompanied by an adult, and not occupying a seat, is charged 10 per cent of the normal First, Tourist or Economy Class fare. Additional infants under two accompanying the same adult, an infant under two occupying a separate seat, and children of two years and over, who have not yet reached their twelfth birthday, are charged 50 per cent of the normal First, Tourist or Economy Class adult fare. Age is taken at the beginning of the outward journey.

PASSPORT, IMMIGRATION AND HEALTH REGULATIONS

Any E A A or Travel Agents' office will gladly advise you of the requirements of your journey.

BAGGAGE

For each adult and child paying half the adult fare, the free allowance on First Class services is 30 kilos (66 lbs.) and on Tourist or Economy Class services it is 20 kilos (44 lbs.). There is no free allowance for an infant carried at 10% of the adult fare, but infant's food for consumption en route and an infant's carrying basket may be carried free.

However, when First Class fare has been paid and a Tourist Class service is used as part of a through journey, the First Class baggage allowance may be carried over that sector, without additional charge. Certain personal articles may be carried free, and details of these may be obtained from any E A A or Travel Agents' Office. Brief cases, cabin bags, attache cases, parcels, typewriters and heavy cameras are weighed as part of your free allowance. If this is exceeded you become liable to excess charges.

Details of excess baggage charges and excess value charges (valuable baggage) can be obtained from any E A A or Travel Agents' office.

YOUR DEPARTURE

It is essential to attend at the departure terminal or airport not later than the time advised. This allows the minimum time to complete all formalities. Flights cannot be delayed for passengers arriving late and we cannot accept responsibility in such cases.

Attendance times should always be checked prior to departure date. These times vary according to the type of aircraft and according to the distance between Town Terminal and Airport.

CANCELLATIONS

Passengers who do not travel on the service for which they hold a reservation, and who have not cancelled in advance, are liable to payment of a "no-show" charge. Refund of fare for reservations cancelled or transferred at short notice cannot be guaranteed.

ABBREVIATIONS

The following abbreviations are used in this Timetable:

CATERING SERVICES—Breakfast, Lunch or Dinner ✱
Light Refreshments ?

AIRCRAFT TYPES

Comet 4 COM	Boeing B707
Friendship FRP	DC7F DC7F
Dakota DC3	Viscount VIS
Dominie DH89	Britannia BRIT
	VCI0 V10

AIRLINES

E.A.A. EC	Aden Airways AD
B.O.A.C. BA	Air India AI
B.U.A. BR	Zambia Airways QZ
C.A.A. CE	Air Malawi QM

CLASSES

First Class F	Night Tourist NT
Tourist Class T	Freighter Service ✱
Economy Class Y	

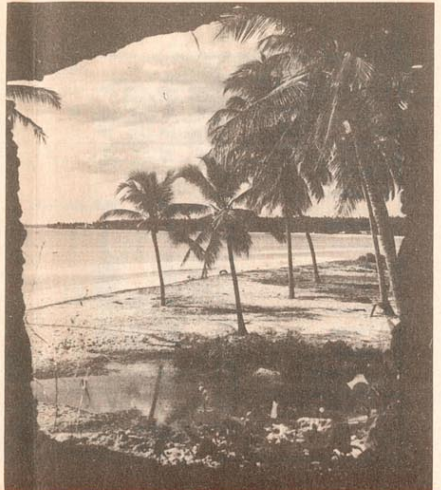
TIMETABLE

Contents

Passenger Information	1
E A A Domestic Route Map	2
Passenger Schedules	4-12
Some E A A All-Inclusive Tours	9
Fares and Rates Guide	13-18
E A A Offices and Handling Agents	19
Africa - Europe - Africa Comprehensive Schedule	20 & 21
International Route Map	23

The information contained in this timetable is subject to alteration without notice. All times shown are local times.





FLY TO THE EAST AFRICAN COAST ON EAA's ALL-INCLUSIVE HOLIDAYS



Rustling palm trees shading uncrowded pearl-white beaches, surf roaring over colourful coral reefs, flamboyant tropical fish moving gracefully through clear, warm cobalt-blue water in exotic lagoons adjoining the mighty Indian Ocean!

This is the renowned East African coast which beckons visitors and East Africans alike either to relax in the sun watching Arab dhows sport their vast lateen sails, or revel in a wide variety of aqua-sports—surfing, water-skiing, skin-diving, goggling, sailing, deepsea fishing or just plain swimming.



TABLE No. 1

ENTEBBE/NAIROBI TO DAR-ES-SALAAM AND COASTAL SERVICES

DAY	MONDAY												TUESDAY												WEDNESDAY												THURSDAY													
	DC3	DC3	DC3	FR'P	FR'P	COM	DH89	FR'P	FR'P	FR'P	FR'P	COM	DC3	DC3	FR'P	FR'P	FR'P	DH89	FR'P	FR'P	FR'P	COM	DC3	DC3	FR'P	FR'P	FR'P	DH89	FR'P	FR'P	FR'P	COM	DC3	DC3	FR'P	FR'P	FR'P	COM	V10	DH89	FR'P	FR'P	FR'P	COM						
AIRCRAFT																																																		
SERVICE	EC	EC	EC	EC	EC	EC	EC	EC	EC	EC	EC	EC	EC	EC	EC	EC	EC	EC	EC	EC	EC	EC	EC	EC	EC	EC	EC	EC	EC	EC	EC	EC	EC	EC	EC	EC	EC	EC	EC	EC	EC	EC	EC	EC	EC	EC	EC	EC		
FLIGHT	0400	051	031	303	329	703	209	362	203	331			0400	031	303	507	312	203	335	327	735				0400	051	321	209	033	337	705	203	319				0400	031	303	719	165†	209	362	203	335	323				
CLASS	NT	*	T	T	T	F/T	T	T	T	T			NT	T	T	T	T	T	T	T	F/T	T			NT	*	T	T	T	T	F/T	T	T				NT	T	T	F/T	F/T	T	T	T	T	T				
ENTEBBE dep																																																		
NAIROBI arr																																																		
ARUSHA arr																																																		
MOSHI arr																																																		
MALINDI dep																																																		
MOMBASA arr																																																		
MOMBO dep																																																		
TANGA dep																																																		
PEMBA arr																																																		
ZANZIBAR arr																																																		
DAR ES SALAAM dep																																																		

NOTES: EC.509/509; EC.703/706/713/717/719/735 and BA.165 are international services and space over domestic sectors may be limited.
 †Until 29th July BA.165 will dep NBO 1030, arr DAR 1140.
 The shaded columns indicate fast "INTER-CITY" services.

TABLE No. 2

DAR-ES-SALAAM TO NAIROBI/ENTEBBE AND COASTAL SERVICES

DAY	MONDAY												TUESDAY												WEDNESDAY												THURSDAY													
	DC3	FR'P	FR'P	DH89	DC3	DH89	FR'P	DC3	COM	FR'P	FR'P	FR'P	DC3	FR'P	FR'P	DH89	FR'P	DC3	FR'P	FR'P	FR'P	COM	DC3	COM	FR'P	DH89	DC3	FR'P	FR'P	FR'P	COM	DC3	FR'P	FR'P	DH89	DH89	FR'P	DC3	DC3	V10	FR'P	COM								
AIRCRAFT																																																		
SERVICE	EC	EC	EC	EC	EC	EC	EC	EC	EC	EC	EC	EC	EC	EC	EC	EC	EC	EC	EC	EC	EC	EC	EC	EC	EC	EC	EC	EC	EC	EC	EC	EC	EC	EC	EC	EC	EC	EC	EC	EC	EC	EC	EC	EC	EC					
FLIGHT No.	0630	361	336	204	052	208	304	032	736	328			0630	313	334	202	302	032	326					0630	714	320	204	052	338	208	302	032	508	716	0630	361	334	204	208	302	028	032	166	310	716					
CLASS	NT	T	T	T	*	T	T	T	F/T	T			NT	T	T	T	T	T	T					NT	F/T	T	T	*	T	T	T	T	T	T	NT	T	T	T	T	T	T	T	T	T	T					
DAR ES SALAAM dep																																																		
ZANZIBAR arr																																																		
PEMBA arr																																																		
TANGA dep																																																		
MOMBO dep																																																		
MOMBASA arr																																																		
MALINDI dep																																																		
MOSHI arr																																																		
ARUSHA arr																																																		
NAIROBI arr																																																		
ENTEBBE arr																																																		

NOTES: EC.508/510; EC.704/714/716/718/736 and BA.166 are international services and space over domestic sectors may be limited.
 The shaded columns indicate fast "INTER-CITY" services.

STANDARD BANK

TRAVELLER'S CHEQUES



Obtainable at all Branches and available in British Sterling and East African Currencies. Standard Bank cheques are encashable at any Branch of the Bank and at banking agents throughout the world. U.S. \$ travellers cheques can also be provided subject to exchange control regulations.



The STANDARD BANK Ltd.
Incorporated in the United Kingdom

TABLE No. 1 ENTEBBE/NAIROBI TO DAR-ES-SALAAM AND COASTAL SERVICES (CONT'D)

FRIDAY										SATURDAY										SUNDAY										DAY														
DC3	DC3	DC3	FR/P	COM	FR/P	FR/P	FR/P	FR/P	FR/P	DC3	DC3	DC3	FR/P	DH89	FR/P	DC3	DH89	FR/P	FR/P	DC3	DC3	DC3	FR/P	COM	DH89	FR/P	DC3	DC3	AIRCRAFT	+														
EC	EC	EC	EC	EC	EC	EC	EC	EC	EC	EC	EC	EC	EC	EC	EC	EC	EC	EC	EC	EC	EC	EC	EC	EC	EC	EC	EC	EC	SERVICE	-														
0400	031	051	301	717	305	333	318	325		0400	053	003	509	209	507	012	203	335	331	0400	019	001	329	713	203	319	005	221	FLIGHT	GMT														
NT	T	*	T	F/T	T	T	T	T	T	NT	T	T	T	T	T	T	T	T	T	NT	T	T	T	F/T/Y	T	T	T	T	CLASS															
				0745				1615											0815										1415	dep	ENTEBBE	+3												
				0845				1745											1020										1545	arr	NAIROBI	+3												
0400	0630	0700		1030	1500			1830		0400	0645	0700	0730		1000				1330	1630	0400	0700	0800	0900	1305				1630	1800											arr		ARUSHA	+3
																																arr		MOSHI	+3									
																																arr		MALINDI	+3									
																																arr		MOMBASA	+3									
																																arr		MOMBO	+3									
																																arr		TANGA	+3									
																																arr		PEMBA	+3									
																																arr		ZANZIBAR	+3									
																																arr		DAR ES SALAAM	+3									

NOTES: EC.507/509; EC.703/705/713/717/19/735 and BA.165 are international services and space over domestic sectors may be limited.
 †Until 29th July BA.165 will dep NBO 1030, arr DAR 1140.
 The shaded columns indicate fast "INTER-CITY" services.

TABLE No. 2 DAR-ES-SALAAM TO NAIROBI/ENTEBBE AND COASTAL SERVICES (CONT'D)

FRIDAY										SATURDAY										SUNDAY										DAY		
DC3	FR/P	FR/P	FR/P	DC3	DC3	FR/P	FR/P	FR/P	COM	DC3	COM	FR/P	DH89	DC3	DH89	DC3	FR/P	FR/P	FR/P	DC3	FR/P	DH89	FR/P	FR/P	DC3	COM	AIRCRAFT	+				
EC	EC	EC	EC	EC	EC	EC	EC	EC	EC	EC	EC	EC	EC	EC	EC	EC	EC	EC	EC	EC	EC	EC	EC	EC	EC	EC	SERVICE	-				
0630	336	315	330	052	002	328	306	716		0630	718	334	204	008	208	024	510	310		0630	320	202	304	508	222	704			FLIGHT	No.	GMT	
NT	T	T	T	*	T	T	T	F/T		NT	F/T	T	T	T	T	T	T	T		NT	T	T	T	T	T	T			CLASS			
																													dep		DAR ES SALAAM	+3
																													arr		ZANZIBAR	+3
																													arr		PEMBA	+3
																													arr		TANGA	+3
																													arr		MOMBO	+3
																													arr		MOMBASA	+3
																													arr		MALINDI	+3
																													arr		MOSHI	+3
																													arr		ARUSHA	+3
																													arr		NAIROBI	+3
																													arr		ENTEBBE	+3

NOTES: EC.500/510; EC.704/714/716/718/736 and BA.166 are international services and space over domestic sectors may be limited.
 The shaded columns indicate fast "INTER-CITY" services.

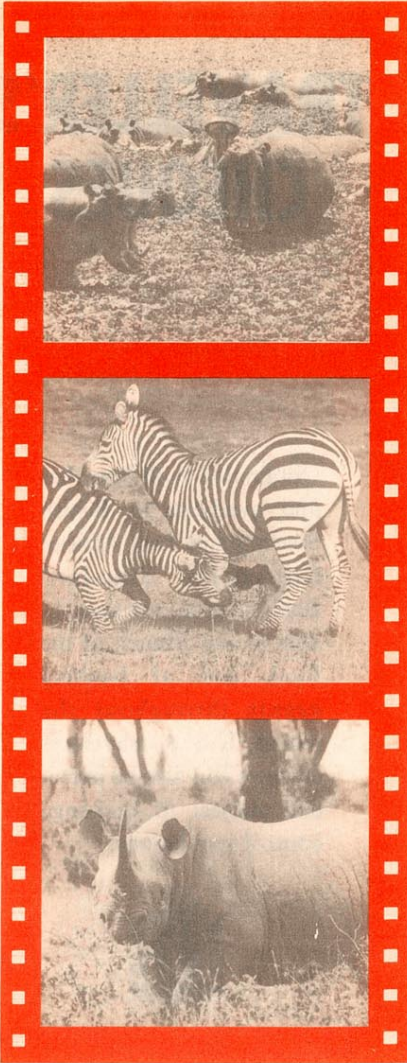


TABLE No. 3

NAIROBI TO ENTEBBE (KASESE, MWANZA, SERONERA)

DAY	MON.		TUES.			WED.			THUR.			FRI.				SAT.		SUN.	
	DC3	FR/P	DC3	FR/P	DC3	DC3	DC3	FR/P	COM	DC3	FR/P	COM	DC3	DC3	FR/P	COM	DC3	COM	FR/P
AIRCRAFT	DC3	FR/P	DC3	FR/P	DC3	DC3	DC3	FR/P	COM	DC3	FR/P	COM	DC3	DC3	FR/P	COM	DC3	COM	FR/P
SERVICE	EC	EC	EC	EC	EC	EC	EC	EC	EC	EC	EC	EC	EC	EC	EC	EC	EC	EC	EC
FLIGHT No.	043	361	037	313	064	015	065	320	716	039	361	716	013	063	315	716	015	718	320
CLASS	T	T	T	T	T	T	T	T	F/T	T	T	F/T	T	T	T	F/T	T	F/T	T
+3 NAIROBI	dep 0600	0800	0630	0715		0800	0800	1150	2300	0645	0800	2300	0630	0645	1330	2300	0800	0900	1150
+3 KISUMU	arr 0715					0915	0915			0800			0745				0915		
+3 KITALA	dep 0730					0930	0930			0815			0800				0930		
+3 TORORO	arr						1055												
+3 JINJA	dep 0820					1020	1140			0905			0850				1020		
+3 ENTEBBE	arr 0835					1035	1155			0920			0905				1035		
+3 KASESE	arr 0905	0930	0845		0945	1105	1225	1320	0001	0950	0930	0001	0935		1500	0001	1105	1000	1320
+3 ENTEBBE	dep 0920								TO	TO	TO	TO				TO	TO	TO	TO
+3 ENTEBBE	arr 1030								L	L	L	L				L	L	L	L
+3 ENTEBBE	dep 1050								O	O	O	O				O	O	O	O
+3 ENTEBBE	arr 1200								N	N	N	N				N	N	N	N
+3 MUSOMA	arr								See Table 12				0810						
+3 MWANZA	dep		0820		1055				1125				0830						
+3 SERONERA	arr		0900		1110				1150				0915						
+3 ARUSHA	dep		TO		1205				TO				0935						
+3 SERONERA	arr		DAR		1220				DAR										
+3 ARUSHA	dep		ES						ES										
+3 SERONERA	arr		SALAAM		1320				SALAAM				1120						
+3 MWANZA	dep		See Table 8		1350				See Table 8				1140						
+3 SERONERA	arr																		
+3 MWANZA	dep				1535														
+3 MUSOMA	arr				1555														
+3 ENTEBBE	dep				1640														
+3 ENTEBBE	arr				1700														
+3 ENTEBBE	arr				TO														
+3 ENTEBBE	arr				NAIROBI														
+3 ENTEBBE	arr				See Table 4														

NOTES: EC.716, EC.718 are international services and space over domestic sectors may be limited.

The shaded columns indicate the fast "INTER-CITY" services.

SEE UGANDA'S BIG GAME

East African Airways invite you to enjoy inclusive excursions at:—

(1) MURCHISON FALLS GAME PARK — Based at the delightful PARAA LODGE, you can see an abundance of elephant, hippo, buffalo, and crocodile on the banks of the mighty River Nile, close to the famous Murchison Falls surging through a mere 20 ft. cleft in the rocks.

4 day inclusive tour: From Nairobi Shs. 1180/-
From Entebbe Shs. 765/-
or
7 day inclusive tour: From Nairobi Shs. 1360/-
5 day inclusive tour: From Entebbe Shs. 830/-

(2) QUEEN ELIZABETH GAME PARK — At the foot of the snow-capped, majestic Mountains of the Moon — the Ruwenzori Range — you can photograph most of the animals seen at Murchison Falls, together with lion and antelope. On a high bluff overlooking the Kazinga Channel and Lake Edward, the MWEYA SAFARI LODGE offers you every comfort after each day's thrilling excursion.

4 day inclusive tour: From Nairobi Shs. 1090/-
From Entebbe Shs. 725/-
or
5 day inclusive tour: From Nairobi Shs. 1150/-
From Entebbe Shs. 785/-

TABLE No. 5

UGANDA INTERNAL

DAY	THUR.
AIRCRAFT	DC3
SERVICE	EC
FLIGHT No.	067
CLASS	T
+3 ENTEBBE	dep 0630
+3 SOROTI	arr 0730
+3 GULU	dep 0835
+3 ARUA	arr 0850
+3 MURCHISON FALLS	dep 0935
+3 ENTEBBE	arr 0950
+3 ENTEBBE	dep 1025
+3 ENTEBBE	arr 1040
+3 ENTEBBE	dep 1150

TABLE No. 4

ENTEBBE TO NAIROBI (SERONERA, MWANZA, KASESE)

DAY	MON.		TUES.			WED.			THUR.			FRI.				SAT.			SUN.		
	FR/P	DC3	FR/P	DC3	DC3	COM	DC3	FR/P	COM	FR/P	DC3	COM	DC3	DC3	FR/P	DC3	DC3	DC3	FR/P		
+	AIRCRAFT																				
-	SERVICE																				
GMT	FLIGHT No.																				
	CLASS OF SERVICE																				
+3	ENTEBBE	dep	FROM DAR ES		0945	FROM DAR ES		FROM DAR ES		FROM DAR ES		FROM DAR ES		FROM DAR ES		FROM DAR ES					
+3	MUSOMA	arr	S			N S		N S		N S		N S		N S		N S					
+3	MWANZA	arr	A		1055	D O L A		D O L A		D O L A		D O L A		D O L A		D O L A					
+3	SERONERA	arr	L		1110	N A		N A		N A		N A		N A		N A					
+3	SERONERA	dep	A		1205	See Table M		See Table M		See Table M		See Table M		See Table M		See Table M					
+3	ARUSHA	arr	M		1220	Table 13		Table 13		Table 13		Table 13		Table 13		Table 13					
+3	ARUSHA	dep	See Table 7		1320	See Table 7		See Table 7		See Table 7		See Table 7		See Table 7		See Table 7					
+3	SERONERA	arr	7		1350																
+3	SERONERA	dep																			
+3	MWANZA	arr			1305	1535		1025								1525					
+3	MWANZA	dep			1340	1555		1045								1545					
+3	MUSOMA	arr				1640															
+3	MUSOMA	dep				1700															
+3	ENTEBBE	arr								1210											
+3	ENTEBBE	dep								1320											
+3	KASESE	arr								1335											
+3	KASESE	dep								1445											
+3	ENTEBBE	arr	1450			1155		1300		1415		0840		1015		1515		1040		1415	
+3	ENTEBBE	dep	1515		0945	1500		1335		1350		1605		1125		1225		1305		1640	
+3	JINJA	arr	1550			1535		1350		1605		1125		1225		1305		1640		1655	
+3	JINJA	dep	1605			1550		1350		1605		1125		1225		1305		1640		1655	
+3	TORORO	arr	?		?	?		?		?		?		?		?		?		?	
+3	TORORO	dep	?		?	?		?		?		?		?		?		?		?	
+3	KITALE	arr	?		?	?		?		?		?		?		?		?		?	
+3	KITALE	dep	?		?	?		?		?		?		?		?		?		?	
+3	KISUMU	arr	1655			1640		1440		1655		1320		1710		1435		1745		1020	
+3	KISUMU	dep	1710			1655		1455		1710		1435		1745		1020		1735		1810	
+3	NAIROBI	arr	1145		1825	1115		1825		1810		0940		1605		1545		0940		1145	
			1825			1810		0940		1605		1545		0940		1145		1825		0845	

NOTES: EC.705, EC.719, EC.717, are international services and space over domestic sectors may be limited.
The shaded columns indicate the fast "INTER-CITY" services.

TABLE No. 6

UGANDA INTERNAL

DAY	MON.
+	AIRCRAFT
-	SERVICE
GMT	FLIGHT No.
	CLASS
+3	ENTEBBE
+3	MURCHISON FALLS
+3	ARUA
+3	GULU
+3	SOROTI
+3	ENTEBBE

SEE TANGANYIKA'S BIG GAME

East African Airways invite you to visit (3) On a 5 day inclusive excursion leaving Serengeti — Land of the Lions. every FRIDAY from:—
Dar-es-Salaam Shs. 1160/-
Zanzibar Shs. 1150/-
Tanga Shs. 1060/-
Mombasa Shs. 1040/-
Arusha Shs. 800/-

(1) On a day excursion from Nairobi every SUNDAY, Shs. 195/- (all inclusive) 0700 DEP | NAIROBI ARR. | 1605 0805 ARR | SERENGETI DEP. | 1500

(2) On a 4 day inclusive excursion leaving every TUESDAY from:—
Nairobi Shs. 660/-
Entebbe Shs. 840/-
Mwanza Shs. 630/-

(4) Ask your Travel Agent for further details concerning these excursions and for information regarding other game-viewing tours, from three to five days duration: in Serengeti, Ngorongoro Crater and at Lake Manyara

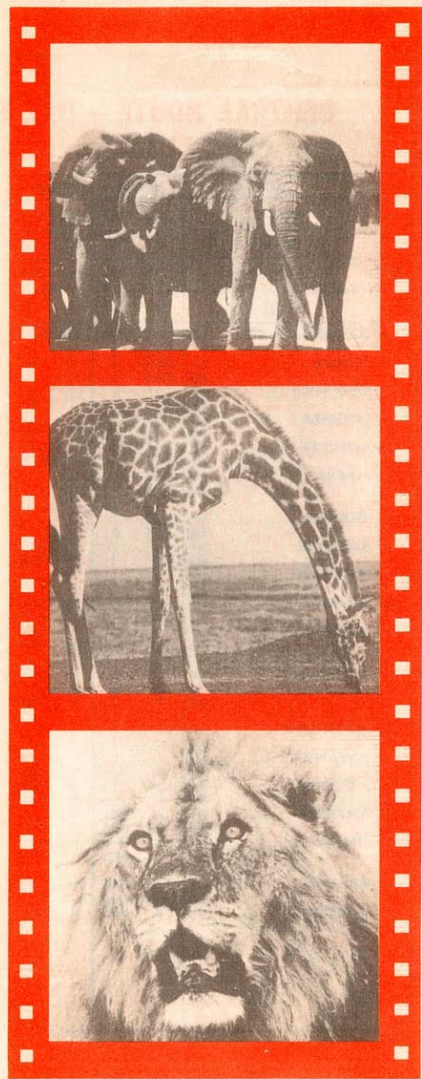


TABLE No. 7

CENTRAL ROUTE — DAR-ES-SALAAM TO ENTEBBE/NAIROBI

DAY	MON.		TUES.		WED		THU	FRI.		SAT.		
+	AIRCRAFT											
-	SERVICE											
GMT	FLIGHT No.											
	283 040		280 064		277 044		282	275 063		281 038		
	CLASS											
	T	T	T	T	T	T	T	T	T	T	T	
+3 DAR-ES-SALAAM	dep 0630	0940	0630	FROM	0630	0700	0745	0630	FROM	0630	1200	
+3 IRINGA	arr 0805			N	0805			0805	N	0805		
+3 SAO HILL	dep 0825			A	0825			0825	A	0825		
+3 NJOMBE	arr			I					R			
+3 SONGEA	arr			R					O	0925		
+3 MBEYA	arr			O					B	0945		
+3 TABORA	arr			B					I			
+3 ENTEBBE	arr			I								
+3 MUSOMA	arr											
+3 MWANZA	arr											
+3 SERONERA	arr											
+3 ARUSHA	arr											
+3 SERONERA	arr											
+3 MWANZA	arr											
+3 ENTEBBE	arr											
+3 JINJA	arr											
+3 KISUMU	arr											
+3 NAIROBI	arr											

TABLE No. 8

CENTRAL ROUTE — NAIROBI/ENTEBBE TO DAR-ES-SALAAM

DAY	MON	TUES.		WED.	THU.	FRI.	SAT.
+	AIRCRAFT						
-	SERVICE						
GMT	FLIGHT No.						
	283	037	280 313	277	282 039	063 275	281
	CLASS						
	T	T	T T	T	T T	T T	T
+3 NAIROBI	dep FROM	0630	FROM 0715	FROM	FROM 0645	0645	FROM
+3 KISUMU	arr D		D	D	D	0800	D
+3 JINJA	arr A		A	A	A	0815	A
+3 ENTEBBE	arr R		R	R	R	0905	R
+3 MUSOMA	arr E		E	E	E	0920	E
+3 MWANZA	arr S		S	S	S	0950	S
+3 SERONERA	arr S		S	S	S	1015	S
+3 ARUSHA	arr A		A	A	A	0810	A
+3 SERONERA	arr A		A	A	A	0830	A
+3 MWANZA	arr M		M	M	M	0915	M
+3 ENTEBBE	arr					0935	
+3 ARUSHA	arr					1120	
+3 SERONERA	arr					1240	
+3 MWANZA	arr					1255	
+3 MUSOMA	arr					1350	
+3 ENTEBBE	arr					1420	
+3 TABORA	arr					1530	
+3 MBEYA	arr					1615	
+3 SONGEA	arr					1715	
+3 NJOMBE	arr					1800	
+3 SAO HILL	arr					1800	
+3 IRINGA	arr					1800	
+3 DAR-ES-SALAAM	arr					1800	

TABLE No 9

SOUTHERN REGION SERVICES

DAY	TUE						WED			THU			FRI			SAT			SUN				
	MON	DC3	DH89	DH89	DH89	DH89	DC3	DC3	DC3	DC3	DC3	DC3	DC3	DC3	DC3	DC3	DC3	DC3	DC3	DC3	DC3		
AIRCRAFT	EC	EC	EC	EC	EC	EC	EC	EC	EC	EC	EC	EC	EC	EC	EC	EC	EC	EC	EC	EC	EC		
GMT	FLIGHT No.	279	213	212	211	210	272	279	273	279	271	213	212	211	210	278							
CLASS	T	T	T	T	T	T	T	T	T	T	T	T	T	T	T	T	T	T	T	T	T		
+3 DAR ES SALAAM_dep	1300	0730		0945		1000		1300	1000	1300	0600	0730		0945		1300							
+3 MAFIA_arr		0815										0815											
+3 KILWA_arr			1100										1100										
+3 NACHINGWEA_arr												0735											
+3 LINDI_dep						1125				1125													
+3 LINDI_dep						1145				1145													
+3 MTWARA_dep	1445					1210	1445	1210	1445	0835						1510							
+3 LINDI_dep	1505					1230	1505	1230	1505	0855						1530							
+3 LINDI_arr	1530						1530		1530	0920													
+3 NACHINGWEA_arr	1545						1545		1545	0935													
+3 KILWA_dep						1315																	
+3 MAFIA_dep						1330																	
+3 DAR ES SALAAM_arr	1710	0830	0915			1115						0830			1115								
						1230	1505	1710	1415	1710	1100				0915	1230	1715						

THE ANSWER TO THE BUSINESSMAN'S PRAYER....

FLY AND DRIVE

Fly there... and drive away the moment you arrive! Save yourself time, trouble and temper... fit more in... get more done. That's the way today's businessman's mind works... thanks to car hire facilities. Simply fly to your appointment and on arrival be met by a rented car (self-drive or chauffeur-driven) in any of the following centres:

- NAIROBI KAMPALA (for Entebbe)
- ARUSHA MOSHI DAR ES SALAAM
- MALINDI MOMBASA

For reservations and further information about

CAR HIRE FACILITIES

consult your travel agent or any East African Airways Office.



SOME E.A.A. "ALL-INCLUSIVE" TOURS

FROM	TO	TOUR NO.	DAYS	COST From
BULAWAYO	MALINDI and ZANZIBAR	EA/1	Wed-Tues (14)	£88 0 Od.
MOMBASA	MALINDI and ZANZIBAR	EA/6	Sat-Sun (16)	£92 0 Od.
		EA/2	Wed-Tues (14)	£85 10 Od.
DAR-ES-SALAAM	ARUSHA for Ngorongoro Crater and Lake Manyara	IDT/3	Mon-Thur (4)	Shs. 1120/-
ZANZIBAR	ZANZIBAR	ZNZ/3	Daily (1)	Shs. 160/-
ENTEBBE	MOMBASA	INX/2	Sun-Sun (8)	Shs. 920/-
	MURCHISON FALLS	IMF/3	Mon-Thur (4)	Shs. 765/-
	KASESE for Q. Elizabeth	IQE/3	Mon-Thur (4)	Shs. 725/-
LUSAKA	MALINDI and ZANZIBAR	EA/3	Sat-Sat (15)	£87 0 Od.
MOMBASA	MOMBASA	EA/4	Sat-Sat (15)	£83 0 Od.
MOMBASA	ARUSHA including Ngorongoro and Lake Manyara	IMT/3	Mon-Thur (4)	Shs. 1000/-
	MOSHI for Tsavo	IMV/1	Mon-Thur (4)	Shs. 840/-
	ZANZIBAR	ZNZ/7	Mon-Fri (1)	Shs. 275/-
NAIROBI	ARUSHA including Ngorongoro, Lake Manyara and Serengeti	INN/3	Tues-Fri (4)	Shs. 920/-
	LAKE MANYARA and Serengeti	INN/4	Wed-Sat (5)	Shs. 920/-
	MOSHI for Tsavo	INV/2	Tues-Sat (4)	Shs. 1235/-
	SERONERA for Serengeti	EC/SP	Sun (1)	Shs. 1235/-
	MALINDI	INZ/4	Wed-Fri (4)	Shs. 790/-
	MOMBASA	INX/1	Thur-Sun (4)	Shs. 790/-
	MOMBASA	INX/2	Sun-Sun (9)	Shs. 170/-
	MOMBASA	INX/1	Sat-Sun (4)	Shs. 385/-
	MOMBASA	INX/1	Thur-Sun (4)	Shs. 650/-
	MURCHISON FALLS	IMF/1	Mon-Thur (4)	Shs. 365/-
	KASESE for Q. Elizabeth	IQE/1	Mon-Thur (4)	Shs. 525/-
	ZANZIBAR	ZNZ/5	Daily (2)	Shs. 1180/-
NDOLA	MALINDI and ZANZIBAR	EA/3	Sat-Sat (15)	£81 0 Od.
MOMBASA	MOMBASA	EA/4	Sat-Sat (15)	£77 0 Od.
SALISBURY	MALINDI and ZANZIBAR	EA/1	Wed-Tues (14)	£81 0 Od.
MOMBASA	MOMBASA	EA/5	Sun-Sat (14)	£77 15 Od.
MOMBASA and ZANZIBAR	MOMBASA and ZANZIBAR	EA/6	Sat-Sun (16)	£82 0 Od.

These tours are a selection from the variety offered by East African Airways

Consult your TRAVEL AGENT or ANY E.A.A. OFFICE

Fares and Schedules are subject to alteration without notice



MARTELL

Fly among friends and make friends with Martell

DEACON'S

Sole Agents throughout East Africa for

MARKS & SPENCER
world famous

St Michael

range of clothing

Branches in all important centres including Aden.

DEACON'S
is a subsidiary of
DODWELL & CO. (E. A.) LTD.

Head Office:
P.O. Box 3401, Nairobi, Kenya
Agents and branch offices throughout the world.

TABLE No. 10 EAST AFRICA TO CENTRAL AFRICA SERVICES

DAY	MON.	TUES.	FRI.	SAT.	SUN.
+ AIRCRAFT	VIS	FR'P FR'P	VIS VIS FR'P FR'P	FR'P DC3 FR'P	DC3 FR'P VIS
- SERVICE	QZ	EC EC	CE QZ EC EC	EC EC EC	EC EC QM
GMT FLIGHT No.	805	303 507	807 883 333 325	509 003 507	019 329 801
CLASS OF SERVICE	T	T T	T T T T	T T T	T T T
+3 NAIROBI dep	1700	1000	1015	0730 1000	1015*
+3 MALINDI dep		0910 ?		0910 ?	0910
+3 MOMBASA arr dep		0930 1120 0950 1140		1700 2010 1720 2010	0945 1120 0945 1040
+3 TANGA dep	*	1040	*	1810	1055 ?
+3 ZANZIBAR dep		1130 ?		1900 ?	1150 ?
+3 DAR ES SALAAM arr dep		1150 1245 1315		1920 2115 1005 1235	0930 1215 1245 1315 1145 1205*
+2 NDOLA arr dep	1950 2030		1305 1350 1545		
+2 LUSAKA arr dep	2120 2150		1635 1705	*	*
+2 BLANTYRE arr dep		1510 1555*	?		1510 1555* 1425 1505
+2 SALISBURY arr	2300	? 1720*	1815	? 1720*	? 1625
+2 LIVINGSTONE arr			1530		

*TRAFFIC RIGHTS: NO LOCAL TRAFFIC MAY BE CARRIED BLZ-SAY ON EC.507.
NO LOCAL TRAFFIC MAY BE CARRIED NBO-DAR ON QM.801.

NEW AVENUE HOTEL

Centrally Situated – First Class Accommodation

TELEPHONE 28711, P.O. BOX 2382, TELEGRAMS: AVENUEHOTEL, NAIROBI.

"White Label"
Dewar's
SCOTCH WHISKY
 - it never varies

Sole Distributors
Jardin Limited
 NAIROBI MOMBASA
 KAMPALA DAR ES SALAAM

"White Label"
Dewar's
SCOTCH WHISKY
 - it never varies



See the splendours of Rhodesia



on a **FLAME LILY HOLIDAY**



Many wonderful all-inclusive holidays from £94. 10s
 Your friendly travel agent will tell you about the many other all inclusive holidays.
 Write for free attractive brochures and maps to:-
 Rhodesia and Nyasaland Tourist Office,
 Pearl Assurance Building, Queensway,
 P.O. Box 2479, Nairobi.



EAST AFRICAN AIRWAYS
CENTRAL AFRICAN AIRWAYS

TABLE No. 11 **CENTRAL AFRICA TO EAST AFRICA SERVICES**

DAY	MON.		WED.			THUR.			SAT.			SUN.			MON.	
	+	-	+	-	+	-	+	-	+	-	+	-	+	-	+	-
AIRCRAFT	VIS	FR'P	FR'P	DC3	VIS	VIS	FR'P	FR'P	FR'P	FR'P	FR'P	DC3	FR'P	FR'P		
SERVICE	QZ	EC	EC	EC	CE	QM	EC	EC	EC	EC	EC	EC	EC	EC		
FLIGHT No.	804	508	334	028	806	802	510	310	320	304	508	222	336	304		
CLASS OF SERVICE	T	T	T	T	T	T	T	T	T	T	T	T	T	T		
+2 LIVINGSTONE dep					1235											
+2 SALISBURY dep	0900	1130*				1120					1130*					
+2 BLANTYRE arr		1255*				1240					1255*					
dep		1335				1320					1335					
+2 NDOLA arr	1040				1415											
dep	1115				1445			1330								
+3 DAR ES SALAAM arr		1740				1705	1810				1740					
dep		1815	0730			1745*	1845	1930	0730	1400	1815	2000	0730	1400		
+3 ZANZIBAR arr			0750						0750	1420		2025	0750	1420		
+3 TANGA arr			0840						0840	1510			0840	1510		
+3 MOMBASA arr		1920						2035		1610	1920		0940	1610		
dep		1940		1720						1630	1940			1630		
+3 MALINDI arr				1755						1650				1650		
+3 NAIROBI arr	1605	2100			1935	1935*	2045				2100					

*TRAFFIC RIGHTS: NO LOCAL TRAFFIC MAY BE CARRIED SAY-BLZ ON EC.508.
 NO LOCAL TRAFFIC MAY BE CARRIED DAR-NBO ON QM.802.

MAYFAIR HOTEL

TERMS: FULL BOARD OR BED AND BREAKFAST

TELEPHONE 55549, P.O. BOX 2680, TELEGRAMS: MAYFAIRHOTEL, NAIROBI

TABLE No. 12 EAST AFRICA/LIBYA/ITALY/France/Britain SERVICES

DAY	MON.		TUES.		WED.		THUR.		FRI.		SAT.		SUN.		
	COM	COM	COM	FR'P	COM	FR'P	COM	FR'P	COM	FR'P	COM	FR'P	COM	COM	
+	AIRCRAFT														
-	SERVICE														
GMT	FLIGHT No.		736	720	714	508	716	310	716	306	716	718	310	712	724* 704
	CLASS OF SERVICE														
	F/T/Y	F/T/Y	F/T/Y	T	F/T/Y	T	F/T/Y	T	F/T/Y	T	F/T/Y	T	F/T/Y	F/T/Y	
+3	DAR ES SALAAM	dep 1745		0650	1815		1930		2000		1930		2050		
+3	NAIROBI	arr 1900		0800	2100		2215		2200		2215		2200		
+3	ENTEBBE	dep	0900	0900		2300		2300		0900		0900	2300		
						THU 0001		FRI 0001		SAT 0001					
+2	BENGHAZI	arr	1330	1330	0450	0450	0450	1505	0330	1330	0350	0450			
		dep	1415	1415	0535	0535	0535	1550	0415	1415	0450	0450			
+1	ROME	arr	1530	1530				1705		1530					
		dep	1615	1615				1750		1615					
+1	PARIS	arr											0705		
		dep											0735		
+1	LONDON	arr	1835	1835	0835	0835	0835	0835	2010	0715	1835	0835			

*EC.724 will operate only on 26th July, 2nd, 9th and 16th August.

TABLE No. 14 EAST AFRICA/SOMALI REPUBLIC/S. ARABIAN FED./PAKISTAN/INDIA POOL SERVICES

DAY	MON.	TUE.	THU.	FRI.	SAT.	SUN.		
	COM	VIS	B707	COM	VIS	B707		
+	AIRCRAFT							
-	SERVICE							
GMT	FLIGHT No.		736	480	210	734	468	202
	CLASS OF SERVICE							
	F/T/Y	T	F/Y	F/T/Y	T	F/Y		
+3	DAR ES SALAAM	dep 1745						
		arr 1900						
+3	NAIROBI	arr 2000	0700	1945	1045	0700	1945	
		dep 2000	0945			0945		
+3	MOGADISHU	arr						
		dep	1030			1030		
+3	ADEN	arr	2245	1335	2215	1330	1335	2215
		dep	2345	2250	1430	2250		
+5	KARACHI	arr	0530		2015			
		dep	0630		2115			
+5	BOMBAY	arr	0840		FRI 0520		2325	MON. 0520

TABLE No. 13 BRITAIN/France/ITALY/LIBYA/EAST AFRICA SERVICES

DAY	MON.		TUES.		WED.		THUR.		FRI.		SAT.		SUN.		
	COM	FR'P	COM	FR'P	COM	FR'P	COM	FR'P	COM	FR'P	COM	FR'P	COM	COM	
+	AIRCRAFT														
-	SERVICE														
GMT	FLIGHT No.		715	507	705	319	719	1651	717	305	711	507	721	713	703 723*
	CLASS OF SERVICE														
	F/T/Y	T	F/T/Y	T	F/T/Y	T	F/T/Y	T	F/T/Y	T	F/T/Y	T	F/T/Y	F/T/Y	
+1	LONDON	dep 1830		2000		2000		1800		1945		1915	2300	2000 2200	
		arr 1													
+1	PARIS	arr													
		dep													
+1	ROME	arr	2040				2010								
		dep	2125				2055								
+2	BENGHAZI	arr	0025		WED. 0050		THU. 0050		FRI. 0040		SAT. 0035		SUN. 0005	0455	
		dep	0110		0135		0135		0120		0120		0050	0540	
+3	ENTEBBE	arr			0740		0740		0645					0940	
		dep			0840		0840		0745					1025	
+3	NAIROBI	arr	0735		0940		0940		0845		0745		0715	1205	
		dep			1000		1630		1055		1030		1000	1305	
		arr			1245		2010		1205		1230		1245	1415	
+3	DAR ES SALAAM	arr												1055	

1BA.165 will dep NBO 1030, arr DAR 1140 until 29th July.
*EC.723 will operate only on 26th July, 2nd, 9th and 16th August.

TABLE No. 15 INDIA/PAKISTAN/S. ARABIAN FED./SOMALI REPUBLIC/EAST AFRICA POOL SERVICES

DAY	MON.	TUE.	THU.	FRI.	SAT.	SUN.		
	VIS	COM	B707	VIS	COM	B707		
+	AIRCRAFT							
-	SERVICE							
GMT	FLIGHT No.		469	735	209	481	733	201
	CLASS OF SERVICE							
	T	F/T/Y	F/Y	T	F/T/Y	F/Y		
+5	BOMBAY	dep	1030	1100		0100	1100	
		arr				0210		
+5	KARACHI	arr	1140			0210		
		dep	1240			0255		
+3	ADEN	arr	1130	1555	1300	1130	0600	1300
		dep	1435			1435		
+3	MOGADISHU	arr	1515			1515		
		dep	1745			1745		
+3	NAIROBI	arr	1840	1530	1745	0845	1530	
		dep	1940					
+3	DAR ES SALAAM	arr						

FARES AND RATES GUIDE

From	Class	Validity	Single	Return	Cargo Per Kilo under 45 Kgs.	Cargo Per Kilo 45 Kgs. and over	From	Class	Validity	Single	Return	Cargo Per Kilo under 45 Kgs.	Cargo Per Kilo 45 Kgs. and over	From	Class	Validity	Single	Return	Cargo Per Kilo under 45 Kgs.	Cargo Per Kilo 45 Kgs. and over	
Abercorn	T	6 Months	£ s.	£ s.	s. d.	s. d.	Benghazi	to	Libyan £	Libyan £			Dar es Salaam	to		Shs.	Shs.	Sh. Ct.	Sh. Ct.		
Nairobi	T	14/30 Days	38 6	72 16	4 10	3 8	Continued	F	12 Months	153 000	290 700			Kampala	F	6 Months	920	1656	—	—	
Aden	to	F	12 Months	1614	3067	8 40	6 30	Nairobi	F	12 Months	94 000	178 600				F	6 Months	760	1368	—	—
Bombay	F	12 Months	1068	2030	—	—	Salisbury	F	12 Months	194 000	368 600				F	12/30 Days	—	906	—	4 80	
Dar es Salaam	F	12 Months	1480	2812	7 00	5 30			Y	12 Months	194 000	368 600				F	12 Months	—	4978	—	—
Karachi	F	12 Months	1155	2195	5 90	4 50									F	12 Months	2620	4978	—	—	
Mogadishu	F	12 Months	975	1853	—	—									Y	12 Months	1740	3306	—	—	
Mombasa	F	12 Months	591	1123	—	—									F	12 Months	2080	3952	—	—	
Nairobi	F	12 Months	1220	2318	5 40	4 00									F	12 Months	1480	2812	9 10	6 90	
Tanga	F	12 Months	940	1786	—	—									Y	12 Months	150	270	1 10	0 90	
Zanzibar	F	12 Months	1140	2166	5 00	3 80									T	6 Months	220	396	1 80	1 40	
	F	12 Months	880	1672	—	—									T	6 Months	—	330	—	—	
	F	12 Months	940	1786	—	—									T	12 Months	—	220	—	—	
	F	30 Days	2081	3955	—	—									Y	19/45 Days	4700	8930	—	—	
	Y	12 Months	1712	3214	—	—									T	6 Months	2680	5092	15 10	11 40	
	F	12 Months	1340	2546	6 10	4 60									T	6 Months	—	4320	—	—	
	F	12 Months	1035	1967	—	—									Y	30 Days	220	396	1 65	1 30	
	F	12 Months	1440	2736	6 70	5 00									T	30 Days	—	335	—	—	
	T	12 Months	1110	2109	—	—									Y	Spec. Exc.	—	247	—	—	
	T	12 Months	—	—	—	—									T	6 Months	100	213	0 75	0 60	
Arua	to	T	6 Months	Shs.	Shs.	Sh. Ct.	Sh. Ct.								T	6 Months	285	517	2 10	1 60	
Entebbe	T	6 Months	215	387	1 70	1 30									T	6 Months	—	330	—	—	
Gulu	T	6 Months	100	180	0 70	0 60									T	6 Months	—	380	—	—	
Kampala	T	6 Months	235	423	1 90	1 50									T	12/30 Days	—	380	—	—	
Murchison Falls	T	6 Months	72	130	0 50	0 40									T	6 Months	—	330	—	—	
Soroti	T	6 Months	190	342	1 40	1 10									T	6 Months	390	702	3 20	2 40	
															T	6 Months	215	387	1 65	1 30	
															T	6 Months	—	248	—	—	
															T	6 Months	—	287	—	—	
															T	12/30 Days	—	247	—	—	
															T	Spec. Exc.	—	172	—	—	
															T	6 Months	195	351	1 45	1 10	
															T	30 Days	—	172	—	—	
															T	Spec. Exc.	—	320	—	1 80	
															T	6 Months	—	370	—	—	
Arusha	to	T	6 Months	Shs.	Shs.	Sh. Ct.	Sh. Ct.								T	6 Months	—	247	—	—	
Dar es Salaam	to	T	6 Months	330	594	2 70	2 10								T	6 Months	—	370	—	—	
		T	6 Months	—	380	—	—								T	6 Months	—	320	—	—	
		T	Spec. Exc.	—	330	—	—								T	6 Months	260	468	2 00	1 50	
		T	6 Months	410	738	3 30	2 50								T	6 Months	—	390	—	—	
		T	6 Months	430	774	3 50	2 70								T	6 Months	—	260	—	—	
		T	6 Months	205	369	1 65	1 30								T	6 Months	600	1080	4 90	3 70	
		T	6 Months	290	522	2 10	1 60								T	6 Months	—	630	—	—	
		T	12/30 Days	—	390	—	—								T	12/30 Days	—	247	—	—	
		T	Spec. Exc.	—	290	—	—								T	6 Months	260	468	1 90	1 50	
		T	6 Months	220	396	1 80	1 40								T	6 Months	520	936	—	—	
		T	6 Months	—	220	—	—								T	6 Months	430	774	3 65	2 60	
		T	Spec. Exc.	—	220	—	—								T	6 Months	—	495	—	—	
		T	6 Months	180	324	1 45	1 10								T	6 Months	—	490	—	—	
		T	6 Months	55	99	0 50	0 40								T	6 Months	—	344	—	—	
		T	6 Months	330	594	2 70	2 10								T	6 Months	800	1440	—	—	
		T	6 Months	304	568	2 00	1 50								T	6 Months	600	1140	4 00	3 00	
		T	6 Months	280	504	2 00	1 50								T	6 Months	—	750	—	—	
		T	6 Months	150	270	1 15	0 90								T	6 Months	350	630	2 90	2 20	
		T	B/E 6 Days	—	150	—	—								T	6 Months	4660	8854	—	—	
		T	Spec. Exc.	—	150	—	—								T	6 Months	2660	5054	—	—	
		T	6 Months	230	414	1 80	1 40								T	6 Months	125	225	0 95	0 80	
		T	6 Months	160	288	1 10	0 90								T	6 Months	—	125	—	—	
		T	6 Months	230	414	1 80	1 40								T	6 Months	4300	8170	—	—	
		T	B/E 6 Days	—	270	—	—								T	6 Months	2520	4788	13 50	10 10	
		T	Spec. Exc.	—	230	—	—								T	6 Months	660	1254	5 00	3 80	
		T	6 Months	315	567	2 30	1 80								T	13/45 Days	—	830	—	—	
		T	Spec. Exc.	—	315	—	—								T	6 Months	320	576	2 40	1 80	
		T	6 Months	—	—	—	—								T	6 Months	430	774	3 50	2 70	
		T	6 Months	—	—	—	—								T	6 Months	430	774	3 50	2 70	
		T	6 Months	—	—	—	—								T	6 Months	125	225	0 95	0 80	
		T	Spec. Exc.	—	—	—	—								T	6 Months	—	150	—	—	
		T	6 Months	—	—	—	—								T	6 Months	—	125	—	—	
		T	6 Months	—	—	—	—								T	6 Months	55	99	0 45	0 40	
		T	Spec. Exc.	—	—	—	—								T	6 Months	—	55	—	—	
Benghazi	to	F	12 Months	Libyan £	Libyan £	—	—	Dar es Salaam	to	F	12 Months	Shs.	Shs.	Sh. Ct.	Sh. Ct.						
Blantyre	F	12 Months	186 000	353 400	—	—	Aden	F	12 Months	1480	2812	—	—								
Dar es Salaam	F	12 Months	117 000	222 300	—	—	Arusha	T	6 Months	1155	2195	7 00	5 30								
Entebbe	F	12 Months	173 000	328 700	—	—	Arusha	T	6 Months	330	594	2 70	2 10								
Johannesburg	F	12 Months	109 000	207 100	—	—	Benghazi	T	6 Months	—	380	—	—								
London	F	12 Months	141 000	267 900	—	—	Blantyre	T	12 Months	2180	4142	12 30	9 20								
	F	12 Months	88 000	167 200	—	—	Bombay	T	6 Months	490	931	3 80	2 90								
	F	12 Months	201 000	381 900	—	—	Bombay	T	13/45 Days	—	620	—	—								
	F	12 Months	123 000	233 700	—	—	Bombay	F	12 Months	2780	5282	—	—								
	F	12 Months	72 800	138 350	—	—	Entebbe	F	6 Months	1840	3496	—	—								

FARES AND RATES GUIDE

From				Class				Validity				Single				Return				Cargo Per Kilo under 45 Kgs.				Cargo Per Kilo 45 Kgs. and over							
From				Class				Validity				Single				Return				Cargo Per Kilo under 45 Kgs.				Cargo Per Kilo 45 Kgs. and over							
From	Class	Validity	Single	Return	Sh.	Sh.	Sh. Ct.	Sh. Ct.	From	Class	Validity	Single	Return	Sh.	Sh.	Sh. Ct.	Sh. Ct.	From	Class	Validity	Single	Return	Sh.	Sh.	Sh. Ct.	Sh. Ct.					
Entebbe				to																											
Continued																															
Benghazi				to				6 Months				Shs. 252.00				Rand 478.80				Kampala				to							
F				12 Months				65				117				0 50				0 40				Continued				to			
T				6 Months				85				153				0 70				0 60				Nairobi				to			
F				12 Months				230				414				1 70				1 30				Nairobi				to			
T				6 Months				120				216				0 90				0 70				Seroneira				to			
F				12 Months				135				243				1 00				1 08				Seroneira				to			
T				6 Months				400				—				—				—				Soroti				to			
F				12 Months				290				522				2 20				1 70				Tabora				to			
T				6 Months				360				—				—				—				Tabora				to			
F				12 Months				80				144				0 60				0 50				Tororo				to			
T				6 Months				—				—				—				—				Tororo				to			
T				Spec. Exc.				—				—				—				—				Karachi				to			
T				6 Months				190				342				1 60				1 20				Karachi				to			
T				12 Months				600				1080				4 90				3 70				Aden				to			
T				6 Months				65				117				0 50				0 40				Aden				to			
T				12 Months				1580				3002				9 50				7 20				Benghazi				to			
T				6 Months				1320				2508				—				—				Benghazi				to			
T				12 Months				2540				4826				—				—				Bombay				to			
T				6 Months				1680				3192				—				—				Bombay				to			
T				12 Months				170				306				1 20				0 90				Dar es Salaam				to			
T				6 Months				1300				2470				—				—				Dar es Salaam				to			
T				12 Months				900				1710				6 00				4 50				Entebbe				to			
T				6 Months				170				340				1 35				1 10				Entebbe				to			
T				12 Months				195				351				1 45				1 10				Johannesburg				to			
T				6 Months				4240				8056				—				—				Johannesburg				to			
T				12 Months				2500				4750				13 90				10 40				Karachi				to			
T				19/45 Days				—				3800				—				—				Karachi				to			
T				12/30 Days				—				620				—				—				Kasere				to			
T				Spec. Exc.				—				428				—				—				Kasere				to			
T				6 Months				580				1044				4 70				3 60				Khartoum				to			
T				12/30 Days				—				620				—				—				Khartoum				to			
T				B/E 6 Days				—				428				—				—				Khartoum				to			
T				Spec. Exc.				—				428				—				—				Khartoum				to			
T				6 Months				190				342				1 60				1 20				Khartoum				to			
T				12 Months				280				504				2 30				1 50				Khartoum				to			
T				6 Months				230				414				1 55				1 20				Khartoum				to			
T				12 Months				380				684				—				—				Khartoum				to			
T				6 Months				310				558				2 60				2 00				Khartoum				to			
T				B/E 6 Days				—				360				—				—				Khartoum				to			
T				12/30 Days				—				380				—				—				Khartoum				to			
T				Spec. Exc.				—				248				—				—				Khartoum				to			
T				6 Months				1006				1912				6 00				4 50				Khartoum				to			
T				14/30 Days				—				1509				—				—				Khartoum				to			
T				12 Months				3800				7220				—				—				Khartoum				to			
T				6 Months				2220				4218				12 00				9 00				Khartoum				to			
T				12 Months				1200				2280				7 60				5 70				Khartoum				to			
T				14/30 Days				—				1800				—				—				Khartoum				to			
T				6 Months				330				594				2 40				1 80				Khartoum				to			
T				12 Months				125				225				1 00				0 80				Khartoum				to			
T				6 Months				330				594				2 70				2 10				Khartoum				to			
T				12 Months				135				243				1 00				0 80				Khartoum				to			
T				6 Months				344				654				—				—				Khartoum				to			
T				12 Months				—				—				—				—				Khartoum				to			
T				Spec. Exc.				—				—				—				—				Khartoum				to			
T				6 Months				210				378				1 80				1 40				Khartoum				to			
T				12 Months				620				1116				5 10				3 90				Khartoum				to			
T				6 Months				85				153				0 70				0 60				Khartoum				to			
T				12 Months				190				342				1 40				1 10				Khartoum				to			
T				6 Months				190				342				1 55				1 20				Khartoum				to			
T				12 Months				215				387				1 65				1 30				Khartoum				to			
T				B/E 6 Days				—				656				—				—				Khartoum				to			
T				12/30 Days				—				636				—				—				Khartoum				to			
T				Spec. Exc.				—				464				—				—				Khartoum				to			
T				6 Months				600				1080				4 90				3 70				Khartoum				to			
T				B/E 6 Days				—				656				—				—				Khartoum				to			
T				12/30 Days				—				636				—				—				Khartoum				to			
T				Spec. Exc.				—				464				—				—				Khartoum				to			
T				6 Months				210				378				1 80				1 40				Khartoum				to			
T				12 Months				300				540				2 20				1 70				Khartoum				to			
T				6 Months				250				450				1 75				1 40				Khartoum				to			
T				12 Months				400				720				—				—				Khartoum				to			
T				6 Months				330				594				2 80				2 10				Khartoum				to			
T				B/E 6 Days				—				396				—				—				Khartoum				to			
T				12 Months				—				—				—				—				Khartoum				to			
T				6 Months				170				306				—				—				Khartoum				to			
T				12 Months				150				270				1 10				0 90				Khartoum				to			
T				6 Months				60				108				0 50				0 40				Khartoum				to			
T				12 Months				230				414				1 70				1 30				Khartoum				to			
T				6 Months				300				540				2 30				1 80				Khartoum				to			

F First Class
T Tourist Class

Y Economy Class

B/E Business Excursion
† Limited stopover facilities. Details on application.

* Bank and Public Holiday Excursion. Details on application.
† Stopovers en route not permitted.

• Excursion Fare. Details on application.

All Special and Business Excursion Fares between points in East Africa are saleable only within East Africa.

FARES AND RATES GUIDE

From	Class	Validity	Single	Return	Cargo Per Kilo under 45 Kgs.	Cargo Per Kilo and over	From	Class	Validity	Single	Return	Cargo Per Kilo under 45 Kgs.	Cargo Per Kilo and over	From	Class	Validity	Single	Return	Cargo Per Kilo under 45 Kgs.	Cargo Per Kilo and over		
Kitale		to					Lushoto		to					Mogadishu		to						
Entebbe	T	6 Months	Shs. 195	Shs. 351	Sh. Ct. 1 45	Sh. Ct. 1 10	Continued							Aden	T	12 Months	Somalo 591	Somalo 1123	Somalo	Somalo		
Jinja	T	6 Months	135	243	1 00	0 80	Mombasa	*	T	Spec. Exc.	—	—	—	Nairobi	T	12 Months	—	—	—	—		
Kampala	T	6 Months	215	387	1 65	1 30	Moshi	T	6 Months	160	288	1 15	0 90	Aden	to							
Kisumu	T	6 Months	90	162	0 60	0 50	Nairobi	T	6 Months	315	567	2 70	2 10	F	12 Months	Shs. 1220	Shs. 2318	Sh. Ct. —	Sh. Ct. —			
Nairobi	T	6 Months	215	387	1 55	1 20	Pemba	T	6 Months	140	252	1 05	0 80	T	6 Months	940	1786	5 40	4 00			
Tororo	T	6 Months	65	117	0 50	0 40	Tanga	T	6 Months	100	180	0 70	0 60	T	6 Months	220	396	1 80	1 40			
							Zanzibar	*	T	Spec. Exc.	—	—	—	Arusha	T	B/E 6 Days	—	—	—	—		
								*	T	Spec. Exc.	170	306	1 25	1 00	T	6 Months	705	1340	5 40	4 10		
Lindi		to					Mafia		to					Dar es Salaam	T	6 Months	215	387	1 65	1 30		
Dar es Salaam	T	6 Months	Shs. 220	Shs. 396	Sh. Ct. 1 80	Sh. Ct. 1 40	Dar es Salaam	T	6 Months	Shs. 100	Shs. 180	Sh. Ct. 0 75	Sh. Ct. 0 60	T	12/30 Days	—	—	—	—	—		
	T	B/E 6 Days	—	—	—	—	Kilwa	T	6 Months	80	144	0 50	0 40	T	B/E 6 Days	—	—	—	—	—		
	T	Spec. Exc.	—	—	—	—	Lindi	T	6 Months	140	252	1 05	0 80	T	6 Months	—	—	—	—	—		
Khartoum	F	12 Months	2260	4294	10 10	7 60	Mombasa	T	6 Months	305	549	2 20	1 70	T	B/E 6 Days	—	—	—	—	—		
Kilwa	T	6 Months	85	153	0 55	0 50	Mtwara	T	6 Months	180	324	1 35	1 10	T	12/30 Days	—	—	—	—	—		
London	F	12 Months	4820	9158	15 80	11 90	Nachingwea	T	6 Months	200	360	1 45	1 10	T	Spec. Exc.	1016	1931	9 50	7 10			
	Y	12 Months	2720	5168	15 80	11 90	Nairobi	T	6 Months	500	900	4 20	3 20	T	B/E 6 Days	—	—	—	—	—		
	Y	19/45 Days	—	4460	—	—	Pemba	T	6 Months	215	387	1 55	1 20	T	12/30 Days	—	—	—	—	—		
Mafia	T	6 Months	140	252	1 05	0 80	Tanga	T	6 Months	215	387	1 55	1 20	F	12 Months	1860	3534	7 80	5 90			
Mombasa	T	6 Months	380	684	3 30	2 50	Zanzibar	T	6 Months	135	243	0 95	0 80	T	12 Months	1280	2432	—	—			
Mtwara	T	6 Months	50	90	0 40	0 30																
Nachingwea	T	6 Months	90	162	0 60	0 50																
Nairobi	T	6 Months	605	1089	5 15	3 90																
Pemba	T	6 Months	310	558	2 60	2 00																
Rome	F	12 Months	4420	8398	—	—																
Tanga	F	12 Months	2580	4902	14 40	10 80																
Zanzibar	T	6 Months	310	558	2 60	2 00																
	T	6 Months	265	477	2 00	1 50																
London		to			£ s.	£ s.	Malindi		to													
Blantyre	F	12 Months	235 0	446 10	27 3	20 6	Arusha	T	6 Months	Shs. 290	Shs. 522	Sh. Ct. 2 10	Sh. Ct. 1 60									
	Y	12 Months	135 0	256 10	—	—	Dar es Salaam	*	T	12/30 Days	—	—	—	—								
Dar es Salaam	†	Y	12 Months	127 0	241 6	—	—	Entebbe	*	T	6 Months	285	513	2 10	1 60							
Entebbe	F	12 Months	235 0	446 10	—	—	B/E 6 Days	—	—	—	—	—	—									
Johannesburg	F	12 Months	134 0	254 12	26 5	19 10	12/30 Days	—	—	—	—	—	—									
Khartoum	F	12 Months	212 0	402 16	—	—	Spec. Exc.	—	—	—	—	—	—									
Kisumu	F	12 Months	125 0	237 10	24 2	18 2	6 Months	—	—	—	—	—	—									
Lindi	Y	12 Months	250 0	475 0	—	—	B/E 6 Days	—	—	—	—	—	—									
Mombasa	Y	12 Months	137 0	260 6	28 2	21 2	12/30 Days	—	—	—	—	—	—									
Mtwara	F	12 Months	139 0	264 2	—	—	Spec. Exc.	—	—	—	—	—	—									
Nairobi	T	6 Months	102 0	193 16	17 2	12 11	30 Days	—	—	—	—	—	—									
Ndola	F	12 Months	218 0	414 4	—	—	Spec. Exc.	—	—	—	—	—	—									
Paris	†	Y	12 Months	126 0	239 8	24 9	18 7	6 Months	75	135	0 60	0 50										
Salisbury	†	Y	12 Months	126 0	239 8	—	—	B/E 6 Days	—	—	—	—	—									
Tabora	F	12 Months	241 0	457 18	—	—	Spec. Exc.	—	—	—	—	—	—									
Tanga	F	12 Months	136 0	258 8	26 9	20 1	6 Months	—	—	—	—	—	—									
Zanzibar	F	12 Months	230 0	437 0	—	—	30 Days	190	342	1 40	1 10											
	Y	12 Months	132 0	250 16	25 10	19 5	Spec. Exc.	—	—	—	—	—	—									
	Y	12 Months	241 0	457 18	—	—	6 Months	—	—	—	—	—	—									
	Y	12 Months	136 0	258 8	—	—	12/30 Days	—	—	—	—	—	—									
	F	12 Months	221 0	419 18	—	—	Spec. Exc.	—	—	—	—	—	—									
	F	12 Months	127 0	241 6	25 1	18 10	Nairobi	*	T	6 Months	240	432	1 80	1 40								
	F	12 Months	230 0	437 0	—	—	B/E 6 Days	—	—	—	—	—	—									
	Y	12 Months	133 0	252 14	26 11	20 3	12/30 Days	—	—	—	—	—	—									
	Y	12 Months	119 0	226 2	—	—	Spec. Exc.	—	—	—	—	—	—									
	Y	12 Months	12 17	24 9	—	—	6 Months	—	—	—	—	—	—									
	T	6 Months	9 11	18 3	—	—	12/30 Days	—	—	—	—	—	—									
	F	12 Months	243 0	461 14	1 4	1 0	Spec. Exc.	—	—	—	—	—	—									
	Y	12 Months	135 0	256 10	27 7	20 9	B/E 6 Days	—	—	—	—	—	—									
	Y	12 Months	123 0	233 14	—	—	6 Months	—	—	—	—	—	—									
	F	12 Months	227 0	431 6	—	—	12/30 Days	—	—	—	—	—	—									
	Y	12 Months	130 0	247 0	25 6	19 2	Spec. Exc.	—	—	—	—	—	—									
	F	12 Months	234 0	444 12	—	—	6 Months	—	—	—	—	—	—									
	Y	12 Months	230 0	434 6	—	—	12/30 Days	—	—	—	—	—	—									
	F	12 Months	235 0	446 10	—	—	Spec. Exc.	—	—	—	—	—	—									
	Y	12 Months	134 0	254 12	26 4	19 9	B/E 6 Days	—	—	—	—	—	—									
							Spec. Exc.	—	—	—	—	—	—									
Lushoto		to					Mbeya		to					Mombo		to						
Arusha	T	6 Months	Shs. 205	Shs. 369	Sh. Ct. 1 65	Sh. Ct. 1 30	Dar es Salaam	T	6 Months	Shs. 390	Shs. 702	Sh. Ct. 3 20	Sh. Ct. 2 40	Arusha	T	6 Months	Shs. 180	Shs. 324	Sh. Ct. 1 45	Sh. Ct. 1 10		
Dar es Salaam	*	T	6 Months	220	396	1 65	1 30	Entebbe	T	6 Months	580	1044	4 70	3 60	Dar es Salaam	T	6 Months	195	351	1 45	1 10	
Malindi	*	T	Spec. Exc.	—	—	—	—	Iringa	T	6 Months	200	360	1 40	1 10	Malindi	*	T	Spec. Exc.	—	—	—	—
	T	6 Months	215	387	—	—	—	Kampala	T	6 Months	600	1080	4 90	3 70	T	6 Months	190	342	1 40	1 10		
	T	30 Days	—	305	—	—	—	Mwanza	T	6 Months	420	756	3 40	2 60	T	30 Days	—	—	—	—		
	T	Spec. Exc.	—	—	—	—	—	Nairobi	T	6 Months	600	1080	4 90	3 70	T	Spec. Exc.	—	—	—	—		
Mombasa	*	T	6 Months	140	252	1 10	0 90	Njombe	T	6 Months	110	198	0 70	0 60	T	6 Months	115	20				

FARES AND RATES GUIDE

Main table containing fare and rate information for various routes and classes, including columns for From, Class, Validity, Single, Return, Cargo Per Kilo under 45 Kgs., and Cargo Per Kilo 45 Kgs. and over.

F First Class
T Tourist Class

Y Economy Class

B/E Business Excursion
+ Limited stopover facilities. Details on application.

* Bank and Public Holiday Excursion. Details on application.
+ Stopovers en route not permitted.
+ Excursion Fare. Details on application.
◆ Special Night Tourist Fare. Details on application.

All Special and Business Excursion Fares between points in East Africa are saleable only within East Africa.

FARES AND RATES GUIDE

From						To						From						To					
Class	Validity	Single	Return	Cargo Per Kilo under 45 Kgs.	Cargo Per Kilo 45 Kgs. and over	Class	Validity	Single	Return	Cargo Per Kilo under 45 Kgs.	Cargo Per Kilo 45 Kgs. and over	Class	Validity	Single	Return	Cargo Per Kilo under 45 Kgs.	Cargo Per Kilo 45 Kgs. and over	Class	Validity	Single	Return	Cargo Per Kilo under 45 Kgs.	Cargo Per Kilo 45 Kgs. and over
Ndola						Salisbury						Tabora											
Continued						Aden						Continued											
London						Benghazi						Khartoum											
Mafia						Bombay						London											
Malindi						Dar es Salaam						Mbeya											
Mombasa						Entebbe						Nairobi											
Nairobi						Karachi						Njombe											
Paris						Khartoum						Rome											
Zanzibar						London																	
Njombe						Paris						Tanga											
Dar es Salaam						Blantyre						Aden											
Iringa						Dar es Salaam						Arusha											
Mbeya						London						Dar es Salaam											
Mwanza						Nairobi						Khartoum											
Nairobi						Ndola						Lindi											
Tabora						Salisbury						London											
Paris						Sao Hill						Moshi											
Blantyre						Dar es Salaam						Mombasa											
Dar es Salaam						Iringa						Mombasa											
London						Mbeya						Mombasa											
Nairobi						Nairobi						Mombasa											
Ndola						Songea						Mombasa											
Salisbury												Mombasa											
Pemba						Seronera						Mombasa											
Arusha						Arusha						Mombasa											
Dar es Salaam						Entebbe						Mombasa											
Lindi						Kampala						Mombasa											
Lushoto						Musoma						Mombasa											
Mafia						Nairobi						Mombasa											
Mombasa						Nairobi						Mombasa											
Mombo						Songea						Mombasa											
Moshi						Dar es Salaam						Mombasa											
Mtwara						Iringa						Mombasa											
Nachingwea						Mbeya						Mombasa											
Nairobi						Nairobi						Mombasa											
Tanga						Sao Hill						Mombasa											
Zanzibar												Mombasa											
Rome						Soroti						Tororo											
Blantyre						Arusha						Entebbe											
Dar es Salaam						Entebbe						Jinja											
Entebbe						Gulu						Kampala											
Johannesburg						Kampala						Kisumu											
Nairobi						Murichison Falls						Kitale											
Salisbury						Tabora						Nairobi											
						Dar es Salaam																	
						Entebbe																	
						Kampala																	

F First Class Y Economy Class B/E Business Excursion † Limited stopover facilities. Details on application. * Bank and Public Holiday Excursion. Details on application.
 T Tourist Class ‡ Stopovers en route not permitted. ‡ Excursion Fare. Details on application.

All Special and Business Excursion Fares between points in East Africa are saleable only within East Africa.

FARES AND RATES GUIDE

From	Class	Validity	Single	Return	Cargo Per Kilo under 45 Kgs.	Cargo Per Kilo 45 Kgs. and over	From	Class	Validity	Single	Return	Cargo Per Kilo under 45 Kgs.	Cargo Per Kilo 45 Kgs. and over	From	Class	Validity	Single	Return	Cargo Per Kilo under 45 Kgs.	Cargo Per Kilo 45 Kgs. and over		
Zanzibar			Shs.	Shs.	Sh. Ct.	Sh. Ct.	Zanzibar			Shs.	Shs.	Sh. Ct.	Sh. Ct.	Zanzibar			Shs.	Shs.	Sh. Ct.	Sh. Ct.		
Aden	F	12 Months	1440	2736	—	—	Continued							Continued								
Arusha	T	6 Months	315	567	2 30	1 80	Lushoto	T	6 Months	170	306	1 25	1 00	Mtwara	T	6 Months	315	567	2 30	1 80		
	T	B/E 6 Days	—	370	—	—		T	30 Days	—	275	—	—	Nachingwea	T	6 Months	395	711	3 25	2 50		
Blantyre	* T	6 Months	—	315	—	—	Mafia	* T	6 Months	135	243	0 95	0 80	Nairobi	T	B/E 6 Days	—	460	—	—		
Dar es Salaam	T	13/45 Days	545	1036	4 20	3 20	Malindi	T	6 Months	240	432	1 80	1 40		* T	Spec. Exc.	—	430	—	—		
	T	6 Months	—	690	—	—		T	B/E 6 Days	—	280	—	—	Ndola	T	6 Months	655	1245	—	—		
	T	6 Months	55	99	0 45	0 40	Mombasa	* T	Spec. Exc.	—	240	—	—		T	13/45 Days	—	820	—	—		
Khartoum	T	B/E 6 Days	—	70	—	—		T	6 Months	170	306	1 35	1 10	Pemba	* T	6 Months	90	162	0 60	0 50		
Lindi	* T	Spec. Exc.	—	55	—	—	Mombo	* T	Spec. Exc.	—	198	—	—		T	Spec. Exc.	—	90	—	—		
London	F	12 Months	2040	3876	8 90	6 70		T	6 Months	145	270	1 05	0 80	Rome	F	12 Months	4300	8170	—	—		
	T	6 Months	1440	2736	2 00	1 50	Moshi	* T	Spec. Exc.	—	261	—	—	Salisbury	* Y	12 Months	2320	4788	13 50	10 10		
Lusaka	Y	19/45 Days	2680	5092	15 10	11 40		T	6 Months	270	486	2 00	1 50		T	6 Months	715	1359	5 50	4 10		
	T	13/45 Days	—	960	—	—		* T	Spec. Exc.	—	145	—	—	Tanga	* T	13/45 Days	—	900	—	—		
								* T	6 Months	—	486	—	—		T	6 Months	—	162	—	—		
								* T	B/E 6 Days	—	320	—	—		‡ T	B/E 6 Days	—	105	—	—		
									Spec. Exc.	—	270	—	—		‡ T	Spec. Exc.	—	90	—	—		

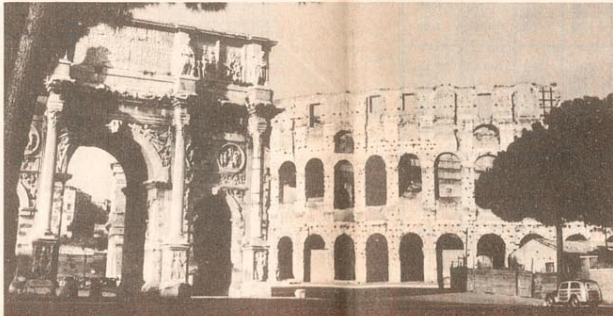
F First Class
T Tourist Class

Y Economy Class

B/E Business Excursion
† Limited stopover facilities. Details on application.

* Bank and Public Holiday Excursion. Details on application.
‡ Stopovers en route not permitted.
● Excursion Fare. Details on application.

All Special and Business Excursion Fares between points in East Africa are saleable only within East Africa.



STOPOVER IN ROME OR PARIS EN ROUTE TO LONDON

EAST AFRICAN AIRWAYS OFFICES AND HANDLING AGENTS

TOWN	OFFICE	ADDRESS	TELEPHONE	TELEGRAMS
ADEN (S. Arabian Federation)	Aden Airways Ltd. East African Airways Representative	Queen Arwa Road, Crater Room 46, P. & O House Tawahi, P.O. Box 1189 P.O. Box 40 P.O. Box 142	2224/5 & 2258 4436	Adenair Airservice
ARUA (Uganda)	Arua Bus Syndicate Ltd.			Airservice
ARUSHA (Tanganyika)	Coopers (Travel) Ltd.		2001	Airservice
BENGHAZI (Libya)	Mitchell Cotts & Co. (Libya) Ltd.		2451	Cottseair
BLANTYRE (Nyasaland)	Central African Airways	18 Sharia Omar Mukhtar P.O. Box 202	2451	Centralair
BOMBAY (India)	British Overseas Airways Corporation East African Airways Representative	Robins Road, P.O. Box 84 202-B Vir Nariman Road, Churchgate, Bombay I c/o B.O.A.C. as above	314/5 242211/2/3/4/5	Speedbird Airservice
DAR-ES-SALAAM (Tanganyika)	East African Airways	Tancot House, City Drive P.O. Box 543	21251	Airservice
ELDORET (Kenya)	Hughes Ltd.	P.O. Box 85	85 & 292	Airservice
ENTEBBE (Uganda)	East African Airways	Entebbe Airport, P.O. Box 68	516	Airservice
GULU (Uganda)	H. S. Patel & Co. Ltd.	P.O. Box 15	15	Airservice
IRINGA (Tanganyika)	Maninga Estates (J. G. de Brito)	P.O. Box 69	2492	Airservice
JINJA (Uganda)	Equatorial Agencies Ltd.	P.O. Box 556		Airservice
KASESE (Uganda)	Kilembe Mines Ltd.	P.O. Box 1		Kilembe 8
KAMPALA (Uganda)	East African Airways	Airways House, cnr. Harcourt Avenue and Colville Street, P.O. Box 523	54265	Airservice
KARACHI (Pakistan)	Pakistan International Airlines East African Airways Representative	Central Hotel Building, Club Road c/o Pakistan International Airlines as above	Exch. 51061 Res. 54378	Pakintair Airservice
KILWA (Tanganyika)	Central Africa Transport Co.	P.O. Box Kilwa		Airservice
KISUMU (Kenya)	Kisumu Travel Service	P.O. Box 764	64	Airservice
KITALE (Kenya)	Hughes (Kitale) Ltd.	P.O. Box 97	44	Airservice
LINDI (Tanganyika)	Twentsche Overseas Trading Co. Ltd.	P.O. Box 33	161	Airservice
LONDON (England)	British Overseas Airways Corporation East African Airways Representative	Airways Terminal, Buckingham Palace Road London, S.W.1. Room 230 Grand Buildings Trafalgar Square, London W.C. 2. P.O. Box 48	Victoria 2323	Speedbird
LUSHOTO MOMBO (Tanganyika)	Lushoto Provision Stores		Trafalgar 1565	Estafira, London WC 2.
MAFIA (Tanganyika)	H. J. Stanley & Sons Ltd.	Mafia Island, P.O. Box 32	45	Provision Store (Lushoto)
MALINDI (Kenya)	Mr. G. Cook	P.O. Box 71		Stanleysons
MBEYA (Tanganyika)	East African Airways	Standard Building, Main Avenue, P.O. Mbeya	13 & 88Y2	Airservice
MOMBASA (Kenya)	East African Airways	Jubilee Insurance Building, Kilindini Road, P.O. Box 677	61 6251	Airservice Airservice
MOSHI (Tanganyika)	Emslies Ltd.	P.O. Box 29	2701	Airservice
MTWARA (Tanganyika)	Twentsche Overseas Trading Co. Ltd.	P.O. Box 55	47	Airservice
MUSOMA (Tanganyika)	Musoma Emporium (Tanganyika) Ltd.	P.O. Box 19		Airservice
MWANZA (Tanganyika)	East African Airways	P.O. Box 592	2249	Airservice
NACHINGWEA (Tanganyika)	Central Africa Transport Co.	P.O. Box 12	5	Airservice
NAIROBI (Kenya)	East African Airways	Mackinnon Building, Kenyatta Avenue P.O. Box 30030 Airways Terminal, Sadler House Koinange Street. P.O. Box 1010	26451 26451	Airservice Airservice
NDOLA (Northern Rhodesia)	Central African Airways		2439, 3225, 2763	Centralair
NJOMBE (Tanganyika)	Mrs. J. Rogerson	Airways Terminal, The Broadway, P.O. Box 184 c/o Tanganyika Wattle Co. Ltd., Njombe	6 (Tue & Sat)	Airservice
PARIS (France)	British European Airways East African Airways Representative	129, Avenue Champs Elysees 1, Rue de Berri	Richelieu 41 - 19 Elysees 83 - 10	Bealine Speedbird
PEMBA (Zanzibar)	Smith Mackenzie & Co. Ltd.	P.O. Box 92, Chake Chake	62	
ROME (Italy)	British European Airways	Hotel Quirinale, Via Nazionale 6a	489111	Bealine
SALISBURY (Southern Rhodesia)	Central African Airways East African Airways Representative	Airways Terminal, P.O. Box 1319 Harvest House, Baker Avenue	61471 22660	Centralair Airservice
SAO HILL (Tanganyika)	Mr. R.T. Seal	P.O. Box 22 John's Corner, Sao Hill Airfield		Airservice
SONGEA (Tanganyika)	Twentsche Overseas Trading Co. Ltd.	P.O. Box 15		Airservice
SOROTI (Uganda)	Hasham Mitha & Co. Ltd.	P.O. Box 54	10	Airservice
TABORA (Tanganyika)	A.J. Nazareth Ltd.	P.O. Box 115	31	Airservice
TANGA (Tanganyika)	East African Airways	Ngamiani Street, P.O. Box 660	7171/2	Airservice
TORORO (Uganda)	Bawa Travel Service	P.O. Box 16	326	Airservice
ZANZIBAR (Zanzibar)	East African Airways	Vuga Road, P.O. Box 773	2181	Airservice

EAST AFRICAN AIRWAYS, HEAD OFFICE: P. O. BOX 19002, EMBAKASI, NAIROBI AIRPORT. TEL: 82222. TELEGRAMS: AIRSERVICE

EUROPE TO AFRICA—PARTNERSHIP SERVICES
BRITAIN—EUROPE—LIBYA—U.A.R.—SUDAN—MAURITIUS—EAST, CENTRAL & SOUTH AFRICA

DAY	MONDAY				TUESDAY				WEDNESDAY				THURSDAY				FRIDAY				SATURDAY				SUNDAY													
	COM	COM	V10	BRIT	V10	COM	COM	V10	COM	COM	V10	V10	BRIT	V10	COM	COM	V10	COM	COM	COM	V10	V10	V10	COM	COM	V10	BRIT	COM	V10	COM	COM	V10	V10	COM	V10			
AIRCRAFT	EC	BA	BA	BR	BR	BA	EC	BA	BA	EC	BA	BA	BA	BR	BR	EC	CE	CE	BA	CE	EC	BA	BA	BA	BA	BA	EC	BA	BR	EC	BR	BA	EC	BA	BA	EC	BA	
SERVICE	715	121	159	101	103	115	705	117	115	719	115	165	165	211	211	719	893	893	129	893	711	119	119	161	141	115	721	115	101	713	101	117	703	115	167	723	167	
FLIGHT No.	F111 F111 F111 Y				Y F111 F111 F111				F111 F111 F111 F111 Y				Y Y F111 F111 F111 F111				F111 F111 F111 F111 F111				F111 F111 F111 Y F111 Y				F111 F111 F111 F111 F111													
CLASS	From To				From To				From To				From To				From To				From To				From To													
EFFECTIVE	Jul 20 on Aug 31				Sep. 8 on Jul 14 Jul 21 on				Jul 15 on Jul 22 on Jul 29 on Sep. 2 on				Jul 16 on Jul 23 on Jul 30 on				Jul 17 on Jul 24 on Jul 31 on				Jul 18 on Jul 25 on Aug 29 on Sep 5 on				Jul 19 on Jul 26 on Aug 2 on Jul 26 on Aug 16 Jul 26													
+1 LONDON	dep	1830	1900	1930	2115	0950	1900	2000	2045	1900	2000	2045	2100	2100	2115	2220	1800	1900	2045	2215	1900	1945	2045	2045	2100	2100	1900	1915	2045	2115	2300	2320	1730	2000	2045	2145	2200	2245
+1 PARIS	arr																																					
+1 FRANKFURT	arr																																					
+1 ROME	arr	2040	x																																			
+2 TRIPOLI	dep	2125																																				
+2 BENGHAZI	arr																																					
+3 CAIRO	arr																																					
+2 KHARTOUM	arr																																					
+3 ENTEBBE	arr																																					
+3 NAIROBI	arr																																					
+3 DAR ES SALAAM	arr																																					
+4 MAURITIUS	arr																																					
+2 NDOLA	arr																																					
+2 LUSAKA	arr																																					
+2 SALISBURY	arr																																					
+2 JOHANNESBURG	arr																																					

NOTES: 1. BR.101, BR.103 and BR.211 Services operate from Gatwick Airport.
 2. Special fares apply for travel by pure jet services between Central Africa/South Africa and East Africa/Central Africa. Details on application.
 3. From 1st October Cairo times should read 1 hour later.
 4. x†Served to disembarking passengers only.



BARCLAYS BANK D.C.O.
 provide a first class service for all travellers.



AFRICA TO EUROPE—PARTNERSHIP SERVICES

SOUTH, CENTRAL & EAST AFRICA—MAURITIUS—SUDAN—U.A.R.—LIBYA—EUROPE—BRITAIN

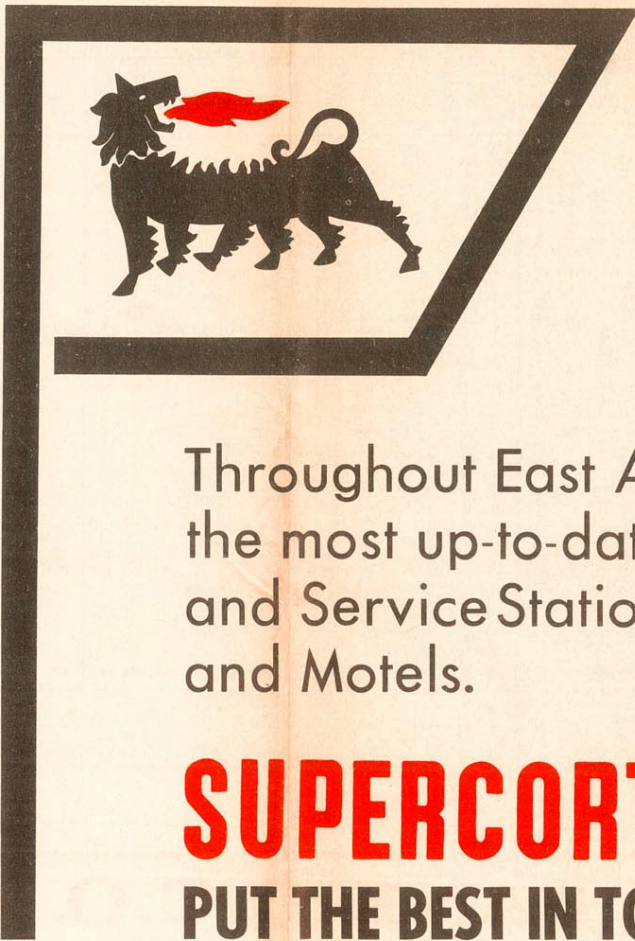
DAY	MONDAY			TUESDAY			WEDNESDAY			THURSDAY			FRIDAY			SATURDAY			SUNDAY																			
	V10	COM	V10	COM	V10	BRIT	V10	COM	COM	COM	V10	V10	COM	COM	V10	V10	COM	COM	V10	V10	COM	BRIT	COM	COM	V10													
AIRCRAFT	BA	BA	BA	EC	BA	BR	BR	BA	EC	EC	BA	BA	BA	EC	BA	BA	BR	BR	EC	BA	CE	CE	EC	BA	BA	EC	BR	BR	EC	BA	BA							
SERVICE	168	118	116	720	160	102	104	122	714	716	116	116	166	166	716	116	118	212	212	716	130	892	892	718	142	162	712	892	120	120	724	102	704	116	116			
FLIGHT No.	FIFTY	FIFTY	FIFTY	FIFTY	FIFTY	Y	Y	FIFTY	FIFTY	FIFTY	FIFTY	FIFTY	FIFTY	FIFTY	FIFTY	FIFTY	FIFTY	Y	Y	FIFTY	FIFTY	FIFTY	FIFTY	FIFTY	FIFTY	FIFTY	FIFTY	FIFTY	FIFTY	FIFTY	FIFTY	FIFTY	FIFTY	FIFTY	FIFTY			
CLASS	FIFTY			FIFTY			FIFTY			FIFTY			FIFTY			FIFTY			FIFTY			FIFTY			FIFTY			FIFTY			FIFTY			FIFTY				
EFFECTIVE	From	To	Jul 27 on	Jul 28 on	Sep 1	Sep 8	Jul 21	Jul 15 on	Jul 22	Jul 15 on	Jul 23 on	Jul 16 on	Jul 23 on	Jul 16 on	Sep 11 on	Sep 4	Jul 17	Jul 17	Aug 1 on	Jul 25	Aug 1 on	Jul 18 only	Aug 1 on	Jul 25	Aug 1 on	Jul 26	Sep 6	Aug 16 on	Aug 30	Jul 19 on	Jul 26	Jul 19 on	Jul 26	Jul 19 on				
+2 JOHANNESBURG	dep	1715	1845				1715		1715	1845			1715	1845																								
+2 SALISBURY	arr	1850	2010				1850		1850	2010			1850	2010																								
	dep	1935	2055				1935		1935	2055			1935	2055																								
+2 LUSAKA	arr	x	x																																			
	dep																																					
+2 NDOLA	arr																																					
	dep																																					
+4 MAURITIUS	1900																																					
+3 DAR ES SALAAM	dep	x																																				
+3 NAIROBI	arr	2200	TUE. 0025				2325		0800	2325	0025		2110	2110																								
	dep	2245	0115				0900	1045	2000	2245	0015		0900	2300	0015	0115																						
+3 ENTEBBE	arr	x*	2325				2115	2335																														
	dep		TUE. 0015				2200	0025																														
+2 KHARTOUM	arr	0020	0155																																			
	dep	0110	0245																																			
+3 CAIRO	arr		x†																																			
	dep	0620	0715																																			
+2 BENGHAZI	arr																																					
	dep	x																																				
+2 TRIPOLI	arr																																					
	dep																																					
+1 ROME	arr	0445	0600																																			
	dep	0535	0655																																			
+1 FRANKFURT	arr		1000																																			
	dep	x	1045																																			
+1 PARIS	arr																																					
	dep	x																																				
+1 LONDON	arr	0745	1215	0905																																		
	dep																																					

NOTES: 1. BR102, BR104 and BR212 Services operate to Gatwick Airport.
 2. Special fares apply for travel by pure jet services between South Africa/Central Africa and Central Africa/East Africa. Details on application.
 3. From 1st October Cairo times should read 1 hour later.
 4. x†Served to joining passengers only.
 5. x†Served to disembarking passengers only.



BARCLAYS BANK D.C.O.
 provide a first class service for all travellers.





AGIP

Throughout East Africa Agip provide the most up-to-date network of Petrol and Service Stations, Bars, Restaurants and Motels.

SUPERCORTEMAGGIORE
PUT THE BEST IN TO GET THE MOST OUT

