

YOU MAY BOOK THROUGH

NO BOOKING FEE

CALENDAR 1962/3

OCTOBER				NOVEMBER							
S	7	14	21	28	S	4	11	18	25		
M	1	8	15	22	29	M	5	12	19	26	
T	2	9	16	23	30	T	6	13	20	27	
W	3	10	17	24	31	W	7	14	21	28	
T	4	11	18	25		T	1	8	15	22	29
F	5	12	19	26		F	2	9	16	23	30
S	6	13	20	27		S	3	10	17	24	

DECEMBER				JANUARY							
S	2	9	16	23	30	S	6	13	20	27	
M	3	10	17	24	31	M	7	14	21	28	
T	4	11	18	25		T	1	8	15	22	29
W	5	12	19	26		W	2	9	16	23	30
T	6	13	20	27		T	3	10	17	24	31
F	7	14	21	28		F	4	11	18	25	
S	8	15	22	29		S	5	12	19	26	

FEBRUARY				MARCH						
S	3	10	17	24	S	3	10	17	24	31
M	4	11	18	25	M	4	11	18	25	
T	5	12	19	26	T	5	12	19	26	
W	6	13	20	27	W	6	13	20	27	
T	7	14	21	28	T	7	14	21	28	
F	8	15	22		F	1	8	15	22	29
S	2	9	16	23	S	2	9	16	23	30

APRIL				MAY							
S	7	14	21	28	S	5	12	19	26		
M	1	8	15	22	29	M	6	13	20	27	
T	2	9	16	23	30	T	7	14	21	28	
W	3	10	17	24		W	1	8	15	22	29
T	4	11	18	25		T	2	9	16	23	30
F	5	12	19	26		F	3	10	17	24	31
S	6	13	20	27		S	4	11	18	25	

JUNE				JULY							
S	2	9	16	23	30	S	7	14	21	28	
M	3	10	17	24		M	1	8	15	22	29
T	4	11	18	25		T	2	9	16	23	30
W	5	12	19	26		W	3	10	17	24	31
T	6	13	20	27		T	4	11	18	25	
F	7	14	21	28		F	5	12	19	26	
S	8	15	22	29		S	6	13	20	27	

AUGUST				SEPTEMBER							
S	4	11	18	25	S	1	8	15	22	29	
M	5	12	19	26	M	2	9	16	23	30	
T	6	13	20	27	T	3	10	17	24		
W	7	14	21	28	W	4	11	18	25		
T	8	15	22	29	T	5	12	19	26		
F	2	9	16	23	30	F	6	13	20	27	
S	3	10	17	24	31	S	7	14	21	28	

EAST AFRICAN AIRWAYS

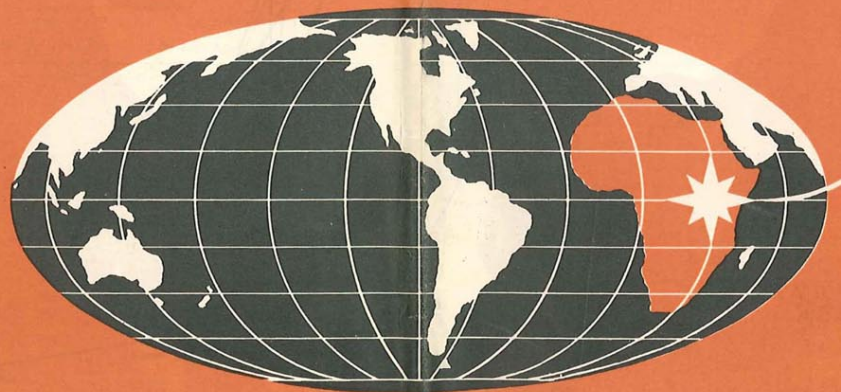
EAST AFRICAN AIRWAYS

# TIME TABLE

# TIME TABLE

TIMETABLE  
COLOUR SEQUENCE

JAN.	ISSUE	—	GREEN
APRIL	"	—	BLUE
JULY	"	—	RED
OCT.	"	—	TAN



EFFECTIVE DATE 15th OCTOBER 1962

## PASSENGER INFORMATION

### RESERVATIONS

It is advisable to make your reservations well in advance through your appointed Travel Agent, or E.A.A. Booking Office. We cannot guarantee reservation of specific seats, although at terminal stations every effort will be made to meet your preferences.

### YOUR TICKET AND CONDITIONS OF CONTRACT

Your ticket is issued subject to these Regulations and to our General Conditions of Carriage of Passengers and Baggage. These conditions are available in all E.A.A. offices and extracts can be found in your ticket.

### RETURN AND ONWARD BOOKINGS

You are requested to check your return journey and onward reservations as soon as possible after your arrival at destination or transfer point, particularly attendance and departure times.

### STOPOVERS

You may break your journey at one or more places en route and retain the benefit of the through fare, except where precluded by Airline or Government regulations, or on some Excursion Fares, provided notice is given before commencing the journey.

### CHILDREN AND INFANTS

An infant under two accompanied by an adult, and not occupying a seat, is charged 10 per cent of the normal First, Tourist, Economy or Sky Coach Class fare. Additional infants under two accompanying the same adult, an infant under two occupying a separate seat, and children of two years and over, who have not yet reached their twelfth birthday, are charged 50 per cent of the normal First, Tourist, Economy or Sky Coach Class adult fare. Age is taken at the beginning of the outward journey.

### PASSPORT, IMMIGRATION AND HEALTH REGULATIONS

Any E.A.A. or Travel Agents' office will gladly advise you of the requirements of your journey.

### BAGGAGE

Free allowance on First Class service is 30 kilos (66 lb.) On Tourist and Economy Class services it is 20 kilos (44 lb.) On Sky Coach Class it is 15 kilos (33 lb.) Passengers travelling part-way on First Class and part-way on Tourist Class, are given the free allowance applicable to the class of travel used.

However, when First Class fare has been paid and a Tourist Class service is used as part of a through journey, the First Class baggage allowance may be carried over that sector, without additional charge. Personal articles, such as a lady's handbag, an overcoat or wrap, a footrug, an umbrella or walking stick, a small camera, binoculars, infant's food for flight and carrying basket and reading matter for the flight may be carried free. Brief cases, cabin bags, attache cases, parcels, typewriters and heavy cameras are weighed as part of your free allowance. If this is exceeded you become liable to excess charges.

Details of excess baggage charges and excess value charges (valuable baggage) can be obtained from any E.A.A. or Travel Agents' office.

### YOUR DEPARTURE

It is essential to attend at the departure terminal or airport not later than the time advised. This allows the minimum time to complete all formalities. Flights cannot be delayed for passengers arriving late and we cannot accept responsibility in such cases.

Attendance times should always be checked prior to departure date. These times vary according to the type of aircraft and according to the distance between Town Terminal and Airport.

### CANCELLATIONS

Passengers who do not travel on the service for which they hold a reservation, and who have not cancelled in advance, are liable to payment of a "no-show" charge. Refund of fare for reservations cancelled or transferred at short notice cannot be guaranteed.

### ABBREVIATIONS

The following abbreviations are used in this Timetable:

CATERING SERVICES—Breakfast, Lunch or Dinner . . . . . X  
Light Refreshments . . . . . Y

### AIRCRAFT TYPES

Britannia . . . . . BRIT Dakota . . . . . DC3  
Comet 4 . . . . . COM Dominie . . . . . DH89  
Canadair . . . . . CAN Viscount . . . . . VIS

### CLASS OF SERVICE

F . . . . . First Class  
T . . . . . Tourist Class  
Y . . . . . Economy Class  
C . . . . . Sky Coach Class



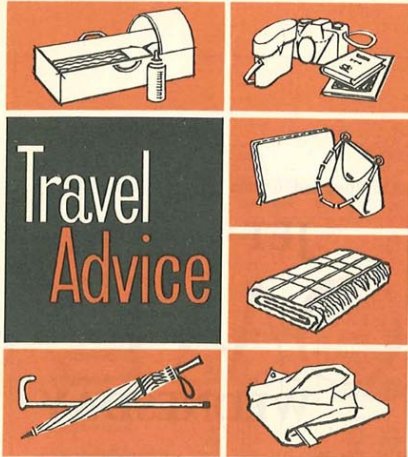
**EAST AFRICAN AIRWAYS**

## TIMETABLE

### CONTENTS

	Page
Passenger Information . . . . .	1
E.A.A. Internal Route Map . . . . .	2
Passenger Schedules . . . . .	3-10
Fares and Rates Guide . . . . .	11-16
E.A.A. Offices and Handling Agents . . . . .	17
Africa - Europe - Africa Comprehensive Schedule . . . . .	18
Africa - Europe - Africa Route Map . . . . .	19

The information contained in this timetable is subject to alteration without notice. All times shown are local times.

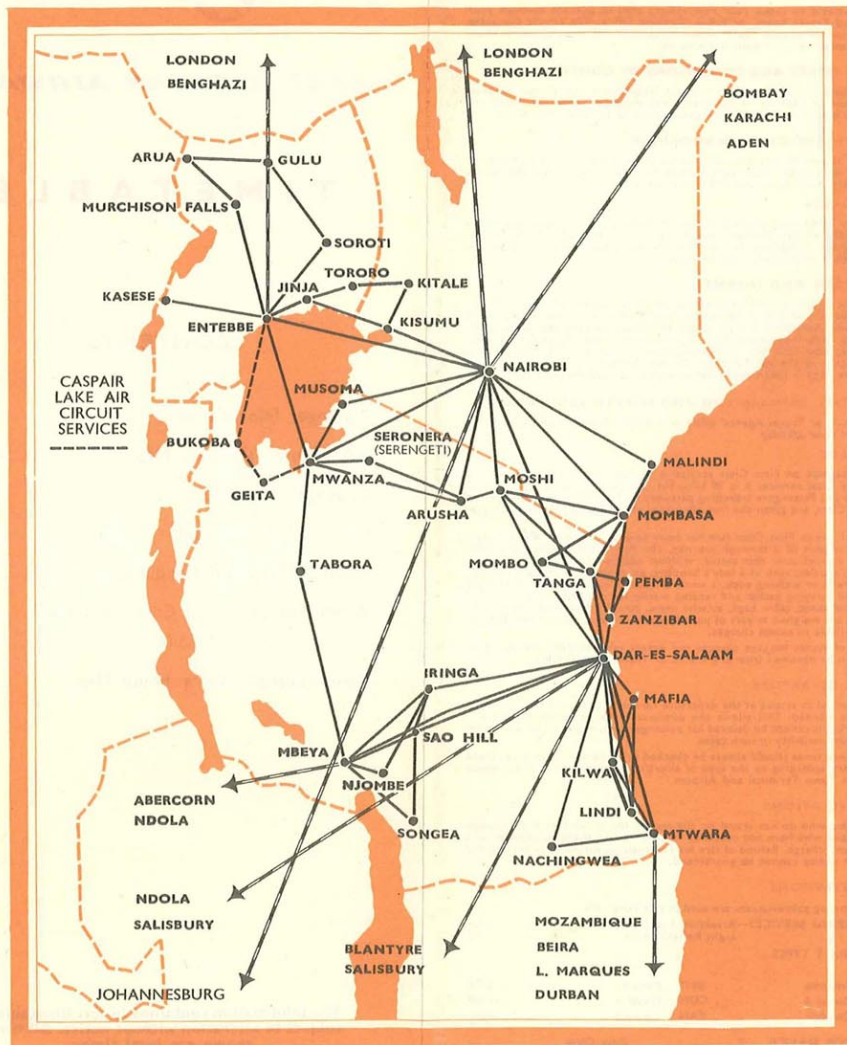


**Travel  
Advice**

## We advise you to

- Save money by purchasing all tickets for your journey before departure.
- See your EAA APPOINTED TRAVEL AGENT. He is there to help and will offer you complete trip planning advice at no extra cost.
- Let us know your contact address or telephone number up to departure time.
- Book your hotel accommodation at destination well in advance and check if accommodation will be provided at transfer points.
- Pack all you need during flight in a small cabin bag. All other articles should be packed in registered baggage, one case containing all that is required at night-stops.
- Keep your Cabin baggage to a minimum.
- Carry your Passport, Health Certificate and Currency with you. Do not pack them.
- Carry any valuables, such as jewellery, personally whenever possible.
- Check the "Message Board" on arrival. If friends are meeting you, give them your service and flight number.
- Check your return journey and onward reservations as soon as possible after your arrival at destination or transfer point, particularly attendance and departure times.

## E A A Domestic Route Map



3 times a week to Rome and 6 times to London from October

JET TO 

JET TO ROME BY EAA COMET<sup>4</sup>  
**ROME**  
 WEDNESDAY

JET TO ROME BY EAA COMET<sup>4</sup>  
**ROME**  
 THURSDAY

JET TO ROME BY EAA COMET<sup>4</sup>  
**ROME**  
 SATURDAY



Fly among friends by 

**EAST AFRICAN AIRWAYS**  
 IN ASSOCIATION WITH BOAC, CAA, SAA AND BUA

TABLE No. 1

**NAIROBI TO DAR-ES-SALAAM AND COASTAL SERVICES**

DAY	MONDAY					TUESDAY				WEDNESDAY				THURSDAY				FRIDAY				SATURDAY				SUNDAY										
	DC3	DC3	COM	DH89	DC3	DC3	CAN	DC3	DC3	DC3	DC3	DH89	DC3	DC3	DC3	COM	DH89	DC3	DC3	DC3	CAN	DH89	DC3	DC3	DC3	CAN	DH89	DC3	DC3	DC3	DC3	DC3				
+	AIRCRAFT																																			
-	SERVICE																																			
GMT	FLIGHT No.																																			
+3 NAIROBI	dep 0800	0815	1115	1400	0700	1000	1230	1800	0700	0900	1400	1800	0700	1115	1230	0800	1000	1400	1700	0700	1000	1100	1400	0700	1400	1430	1700									
+3 ARUSHA	arr	?	?	?	?	?	?	?	?	?	?	?	?	?	?	?	?	?	?	?	?	?	?	?	?	?	?	?	?	?	?	?	?	?	?	?
+3 MOSHI	arr																																			
+3 MALINDI	arr																																			
+3 MOMBASA	dep	0945	1000	1545	1600	0945	1120	1545	1945	0845	0900	1545	1945	0945	1055	0945	1120	1545	1845	0945	1055	1325	1545	1600	1000	1600	1000	1600	1000	1600	1000	1600	1000	1600	1000	1600
+3 MOMBO	dep	1000	1015	1600	1600	1000	1150	1600	2010	1005	1025	1600	2010	1000	1600	1000	1150	1600	1905	1000	1600	1000	1600	1000	1600	1000	1600	1000	1600	1000	1600	1000	1600	1000	1600	
+3 TANGA	arr	1040	1055	1530	1655	1040	1055	1640	1655	1100	1115	1640	1655	1040	1055	1530	1655	1055	1640	1655	1040	1055	1310	1640	1040	1310	1640	1040	1310	1640	1040	1310	1640	1040	1310	
+3 PEMBA	arr																																			
+3 ZANZIBAR	arr	1135	1710	1735	1750	1135	1735	1750	1750	1155	1210	1735	1750	1155	1210	1735	1750	1155	1210	1735	1750	1155	1210	1735	1750	1155	1210	1735	1750	1155	1210	1735	1750	1155	1210	
+3 DAR-ES-SALAAM	arr	1215	1135	1230	1800	1815	1215	1255	1815	2130	1235	1215	1800	1815	2130	1215	1230	1800	1815	2025	1215	1255	1800	1815	2025	1215	1255	1800	1815	2025	1215	1255	1800	1815	2025	1215

NOTES: EC.103 (DC3), EC.507/509 (CAN), EC.703 (COM) and EC.713 (COM) are international services and space over domestic sectors may be limited.  
 \* These services offer First and Tourist Class accommodation.

TABLE No. 2

**DAR-ES-SALAAM TO NAIROBI AND COASTAL SERVICES**

DAY	MONDAY					TUESDAY			WEDNESDAY					THURSDAY					FRIDAY				SATURDAY				SUNDAY									
	DC3	DC3	DH89	DC3	COM	DC3	DC3	DC3	DC3	DC3	DH89	DC3	DC3	CAN	DC3	DH89	DC3	DC3	COM	DC3	DH89	DC3	CAN	DC3	DH89	DC3	DC3	DC3	DC3	DC3	DC3	DC3	DC3	DC3		
+	AIRCRAFT																																			
-	SERVICE																																			
GMT	LIGHT No.																																			
+3 DAR-ES-SALAAM	dep	0645	0700	0800	1400	2030	0700	1400	1700	0700	0800	1230	1400	1700	1820	0700	1230	1400	1700	2030	0700	1230	1400	1745	0700	1230	1405	1400	1800	0700	1400	1825	1830			
+3 ZANZIBAR	arr	?	?	?	?	?	?	?	?	?	?	?	?	?	?	?	?	?	?	?	?	?	?	?	?	?	?	?	?	?	?	?	?	?	?	?
+3 PEMBA	arr																																			
+3 TANGA	arr																																			
+3 MOMBO	arr																																			
+3 MOMBASA	arr	0805	0925	1625	1740	0925	1625	1850	1925	0925	1625	1850	1925	0925	1625	1850	1925	0925	1625	1850	1925	0925	1625	1850	1925	0925	1625	1850	1925	0925	1625	1850	1925	0925	1625	
+3 MALINDI	arr	0820	0940	1640	1715	1005	1640	1915	0940	?	1640	1915	1955	0940	?	1640	1915	1955	0940	?	1640	1915	1955	0940	?	1640	1915	1955	0940	?	1640	1915	1955	0940	?	1640
+3 MOSHI	arr																																			
+3 ARUSHA	arr	?	?	?	?	?	?	?	?	?	?	?	?	?	?	?	?	?	?	?	?	?	?	?	?	?	?	?	?	?	?	?	?	?	?	?
+3 NAIROBI	arr	1005	1255	1920	2145	1150	1825	2100	1125	1255	1825	2100	2115	1125	1255	1920	2100	2145	1125	1255	1825	2040	1240	1720	1825	2130	1220	1825	2000	2030						

NOTES: EC.104 (DC3), EC.508/EC.510 (CAN), EC.704 (COM) and EC.714 (COM) are international services and space over domestic sectors may be limited.  
 \* These services offer First and Tourist Class accommodation.

TABLE No. 3

**NAIROBI TO ENTEBBE (MWANZA, KASESE, SERONERA)**

DAY	MON.		TUES.			WED.			THUR.		FRI.		SAT.			SUN.
	AIRCRAFT	DC3	DC3	DC3	DC3	DC3	DC3	COM	DC3	CAN	DC3	DC3	DC3	COM	COM	DC3
SERVICE	EC	EC	EC	EC	EC	EC	EC	EC	EC	EC	EC	EC	EC	BA	EC	
GMT FLIGHT No.	043	017	037	011	064	065	019	716*	039	401	011	063	015	720*	160*	013
+3 NAIROBI	dep 0700	1045	0630	0645		0730	1430	2240	0645	0830	0645	0730	0730	0945	1915	0800
+3 KISUMU	arr 0815	?	?	?		0845	?	?	0800	?	?	?	0845	?	?	?
+3 KITALE	arr 0830					0900			0815				0900			
+3 TORORO	arr					0940										
+3 JINJA	arr 0920					1025			0905				0950			
+3 ENTEBBE	arr 0925	1250	0850			1110			0920				1005			
+3 ENTEBBE	dep 1005					1155	1635	2345	0950	1005	0850		1035	1050	2025	1005
+3 KASESE	dep 1020			0935					1015							
+3 ENTEBBE	arr 1130															
+3 ENTEBBE	arr 1150															
+3 ENTEBBE	arr 1300															
+3 MUSOMA	arr															
+3 MWANZA	arr															
+3 MWANZA	dep		0820	1045					1125				0855	0910		
+3 MWANZA	dep		0840	1105					1145				0955	1015		
+3 SERONERA	arr															
+3 SERONERA	dep															
+3 ARUSHA	arr															
+3 ARUSHA	dep															
+3 SERONERA	arr															
+3 SERONERA	dep															
+3 MWANZA	arr															
+3 MWANZA	dep															
+3 MUSOMA	arr															
+3 MUSOMA	dep															
+3 ENTEBBE	arr															
+3 ENTEBBE	arr															

NOTE: EC.716, EC.720 and BA.160 are international services and space over domestic sectors may be limited.  
\* These services offer First and Tourist Class accommodation.

TABLE No. 5

**UGANDA INTERNAL**

DAY	THUR.
AIRCRAFT	DC3
SERVICE	EC
GMT FLIGHT No.	067
+3 ENTEBBE	dep 0640
+3 SOROTI	arr 0740
+3 GULU	dep 0755
+3 GULU	arr 0845
+3 ARUA	arr 0900
+3 ARUA	dep 0945
+3 MURCHISON FALLS	arr 1000
+3 MURCHISON FALLS	arr 1035
+3 ENTEBBE	dep 1050
+3 ENTEBBE	arr 1200

**SEE UGANDA'S BIG GAME**

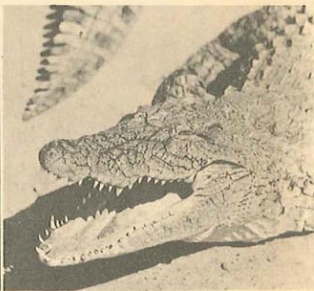
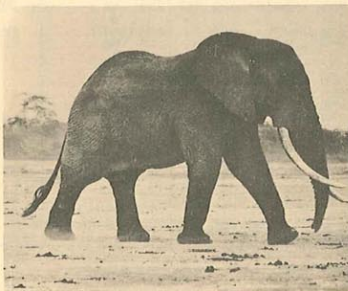
East African Airways invite you to enjoy inclusive excursions at:—

(1) MURCHISON FALLS GAME PARK — Based at the delightful PARAA LODGE, you can see an abundance of elephant, hippo, buffalo, and crocodile on the banks of the mighty River Nile, close to the famous Murchison Falls surging through a mere 20 ft. cleft in the rocks.

4 day inclusive tour: From Nairobi Shs. 1140/-  
From Entebbe Shs. 720/-  
5 day inclusive tour: From Nairobi Shs. 1300/-  
From Entebbe Shs. 780/-

(2) QUEEN ELIZABETH GAME PARK — At the foot of the snow-capped, majestic Mountains of the Moon — the Ruwenzori Range — you can photograph most of the animals seen at Murchison Falls, together with lion and antelope. On a high bluff overlooking the Kazanga Channel and Lake Edward, the MWEYA SAFARI LODGE offers you every comfort after each day's thrilling excursion.

4 day inclusive tour: From Nairobi Shs. 945/-  
From Entebbe Shs. 580/-  
5 day inclusive tour: From Nairobi Shs. 995/-  
From Entebbe Shs. 630/-



"Some of the memorable sights to be seen on E.A.A.'s inclusive game-viewing tours"

TABLE No. 4

**ENTEBBE TO NAIROBI (SERONERA, KASESE, MWANZA)**

DAY	MON.		TUES.		WED.		THUR.		FRI.				SAT.			SUN.
	DC3	DC3	DC3	DC3	COM	DC3	CAN	DC3	COM	DC3	DC3	DC3	COM	DC3	DC3	DC3
+	AIRCRAFT															
-	SERVICE															
GMT	FLIGHT No.															
	040	018	012	064	715*	012	402	046	719*	066	063	014	159*	038	016	042
			From Nairobi See Table 3 (EC.011)						From Nairobi See Table 3							
+3 ENTEBBE	dep			0935												
+3 MUSOMA	arr									0855						
	dep									0910						
+3 MWANZA	arr			1045						0955						
+3 SERONERA	arr	FROM		1105						1015			FROM			
	dep			1200												
	dep	A		1215									T			
	dep	B		x									O			
+3 ARUSHA	arr	O		1315						1200			R			
+3 SERONERA	arr	R		1430						x			A			
	dep	A								1315			See Table 7			
	dep	See Table 7								1330						
+3 MWANZA	arr	1320		1615						1425			1455			
+3 MUSOMA	arr	1340		1635						1445			1515			
+3 ENTEBBE	arr			1720												
	arr			1735												
	dep															
	dep	x														
+3 KASESE	arr															
+3 ENTEBBE	arr															
	dep	1450								1555						
	dep	1515	1600	1500		0940	1500	1035	1530	0740	0930	1640	1420	1500	1400	
+3 JINJA	arr															
+3 TORORO	arr	1550							1605		1005			1535		
	arr	1605							1620		1020			1550		
	arr										1050					
+3 KITALE	arr										1105					
+3 KISUMU	arr	1655							1710		1135					
	arr	1710							1725		1150					
	arr										1245			1640		
+3 NAIROBI	arr	1825	1805	1705	1900	1045	1705	1210	1840	0845	1400	1845	1530	1705	1810	1605

NOTE: EC.715, EC.719 and BA.159 are International services and space over domestic sectors may be limited.  
\* These services offer First and Tourist Class accommodation.

TABLE No. 6

**UGANDA INTERNAL**

DAY		MON.
+	AIRCRAFT	DC3
-	SERVICE	EC
GMT	FLIGHT No.	068
+3 ENTEBBE	dep	1330
+3 MURCHISON FALLS	arr	1440
	dep	1455
+3 ARUA	arr	1530
	dep	1545
+3 GULU	arr	1630
	dep	1645
+3 SOROTI	arr	1735
	dep	1750
+3 ENTEBBE	arr	1850

**SEE TANGANYIKA'S BIG GAME**

East African Airways invite you to visit Serengeti — Land of the Lions.

- On a day excursion from Nairobi every SUNDAY, Shs. 170/- (all inclusive) 0700 DEP. | NAIROBI ARR. | 1605 0805 ARR. | SERENGETI DEP. | 1500
- On a 4 day inclusive excursion leaving every TUESDAY from:—  
Nairobi ... Shs. 660/-  
Entebbe ... Shs. 840/-  
Mwanza ... Shs. 630/-
- On a 5 day inclusive excursion leaving every FRIDAY from:—  
Dar-es-Salaam ... Shs. 1160/-  
Zanzibar ... Shs. 1150/-  
Tanga ... Shs. 1040/-  
Mombasa ... Shs. 1040/-  
Arusha ... Shs. 800/-
- Ask your Travel Agent for further details concerning these excursions and for information regarding other game-viewing tours, from three to five days duration; in Serengeti, Ngorongoro Crater and at Lake Manyara.



"Tourists disembarking at Seronera in Tanganyika's Serengeti National Park on the immensely popular Sunday excursion from Nairobi."

TABLE No. 7

**CENTRAL ROUTE — DAR-ES-SALAAM TO ENTEBBE / NAIROBI**

DAY	MON.	TUES.	FRI.	SAT.
<b>AIRCRAFT</b>	DC3	DC3	DC3	DC3
<b>SERVICE</b>	EC	EC	EC	EC
<b>FLIGHT No.</b>	040	064	151	277
<b>DAR-ES-SALAAM</b>	dep 0630	FROM N 1330	0730	FROM N 0715
<b>IRINGA</b>	arr 0805	A	0905	A 0850
	dep 0825	I	0925	I 0910
<b>SAO HILL</b>	arr	R	1000	R
	dep	O	1020	O
<b>NJOMBE</b>	arr	B		B 1010
	dep	I		I 1030
<b>MBEYA</b>	arr 0940	See Table 8	1120	See Table 8
	dep 1000	EC 011	1140	1135
<b>TABORA</b>	arr 1150		TO D 1325	
	dep 1210		A R 1345	
<b>ENTEBBE</b>	arr	(0850) 0935	A B E R C O N	N D O L A
<b>MUSOMA</b>	arr	I	E S	0855
	dep	2	0910	0910
<b>MWANZA</b>	arr 1320	1045	S A	0955
	dep 1340	1105	R N	1015
<b>SERONERA</b>	arr	1200	L A	
	dep	1215	A M	2
<b>ARUSHA</b>	arr	1315	See Table 8	1200
	dep	1430		1215
<b>SERONERA</b>	arr			1315
	dep			1330
<b>MWANZA</b>	arr	1615		1425
	dep	1635		1445
<b>MUSOMA</b>	arr	1720		1555
	dep	1735		EC.014 1640
<b>ENTEBBE</b>	arr 1450			1555
	dep 1515			EC.014 1640
<b>JINJA</b>	arr 1550			
	dep 1605			
<b>KISUMU</b>	arr	1655		2
	dep	1710		
<b>NAIROBI</b>	arr	1825	1900	1845
				1705

NOTE: EC.151 is an international service, therefore space over domestic sectors may be limited.

TABLE No. 8

**CENTRAL ROUTE — NAIROBI / ENTEBBE TO DAR-ES-SALAAM**

DAY	TUES.	WED.	THUR.	FRI.
<b>AIRCRAFT</b>	DC3	DC3	DC3	DC3
<b>SERVICE</b>	EC	EC	EC	EC
<b>FLIGHT No.</b>	037	011	152	039
<b>NAIROBI</b>	dep 0630	0645		0645
	2	2		2
<b>KISUMU</b>	arr			0800
	dep			0815
<b>JINJA</b>	arr			0905
	dep			0920
<b>ENTEBBE</b>	arr	0850		0950
	dep	EC.064 0935		
<b>MUSOMA</b>	arr			0855
	dep			0910
<b>MWANZA</b>	arr 0820	1045		0955
	dep 0840	1105		1015
<b>SERONERA</b>	arr	1200	FROM A B E R C O N	FROM D A R E S A L A M
	dep	1215	N D O L A	
<b>ARUSHA</b>	arr	1315		1200
	dep	1430		1215
<b>SERONERA</b>	arr			1315
	dep			1330
<b>MWANZA</b>	arr	1615	1125	1425
	dep	1635	1145	1445
<b>MUSOMA</b>	arr	1720		2
	dep	1735		2
<b>ENTEBBE</b>	arr	TO N A		1555 (1640)
	dep	0950		
<b>TABORA</b>	arr		1255	
	dep	1010		
<b>MBEYA</b>	arr	1200	1245	1505
	dep	1220	1345	1525
<b>SONGEA</b>	arr	2		
	dep	2		
<b>NJOMBE</b>	arr	1305		
	dep	1325		
<b>SAO HILL</b>	arr			1425
	dep			1445
<b>IRINGA</b>	arr	1425		1640
	dep	1445		1700
<b>DAR-ES-SALAAM</b>	arr	1620	1625	1835
				1715

NOTE: EC.152 is an international service, therefore space over domestic sectors may be limited.

TABLE No. 9

**SOUTHERN REGION SERVICES**

DAY	MON.	WED.	THUR.	SAT.
+ AIRCRAFT	DC3	DC3	DC3	DC3
- SERVICE	EC	EC	EC	EC
GMT FLIGHT No.	274	103	273	271
+3 DAR-ES-SALAAM dep	1300	1330	0730	1100
+3 MAFIA arr	1340			1140
dep	1355		2	1155
+3 KILWA arr	1430			
dep	1445	2		2
+3 NACHINGWEA arr	2			1310
dep				1325
+3 MTWARA arr	1530	1515	0915	1410
dep	1550	1535	0935	1425
+3 LINDI arr	1615	TO	1000	1450
dep	1630	D	1015	1505
+3 KILWA arr		U	1050	1540
dep		R	1105	1555
+3 MAFIA arr	1730	B	1140	1630
dep	1745	A	1155	1645
+3 DAR-ES-SALAAM arr	1820	N	1230	1720

NOTE: EC.103 is an international service and space over domestic sectors may be limited.

TABLE No. 10

**SOUTHERN REGION SERVICES**

DAY	TUES.	SAT.	SUN.
+ AIRCRAFT	DC3	DC3	DC3
- SERVICE	EC	EC	EC
GMT FLIGHT No.	272	104	278
+3 DAR-ES-SALAAM dep	0730	See Table 12 FROM D	1315
+3 MAFIA arr	0810	U	
dep	0825	R	
+3 LINDI arr	0920	A	1440
dep	0935	N	1500
+3 MTWARA arr	1000	1035	1525
dep	1020	1055	1545
+3 NACHINGWEA arr	1105		
dep	1120	2	2
+3 DAR-ES-SALAAM arr	1255	1230	1720

NOTE: EC.104 is an international service and space over domestic sectors may be limited.

**SOME E.A.A. ALL-INCLUSIVE TOURS**

FROM	TO	TOUR NO.	DAYS	COST
BULAWAYO	MALINDI or MOMBASA	EA/1 EA/6	Wed-Tue Sat-Sun	(14) £81 0 Od. (15) £83 10s. Od.
DAR-ES-SALAAM	SERONERA for Serengeti MAFIA SALISBURY including Kariba and Victoria Falls	ITS/1 ITT/2 ED/IX	Fri-Tue Sat-Mon Sun-Sun	(5) Shs. 1160/- (3) Shs. 270/- (8) Shs. 1855/- (11) Shs. 1580/-
ENTEBBE	SERONERA for Serengeti MURCHISON FALLS KASESE for Queen Elizabeth Park SALISBURY including Kariba and Victoria Falls	IUS/1 IMF/3 IQE/3 EK/2X	Tue-Fri Mon-Thu Mon-Thu Sun-Sun	(4) Shs. 840/- (4) Shs. 720/- (4) Shs. 580/- (15) Shs. 2260/-
MOMBASA	ARUSHA including Lake Manyara, Ngorongoro, Serengeti MOSHI including Tsavo Royal, Amboseli, Ngurdoto SERONERA for Serengeti SALISBURY including Kariba and Victoria Falls	IMT/1 IMV/1 IKS/2 EM/IX	Mon-Thu Mon-Thu Fri-Tue Sun-Sat	(4) Shs. 900/- (4) Shs. 700/- (5) Shs. 1040/- (6) Shs. 1610/- (10) Shs. 1800/-
NAIROBI	ARUSHA including Lake Manyara, Ngorongoro Crater, Serengeti MOSHI including Tsavo Royal, Amboseli, Ngurdoto SERONERA for Serengeti MURCHISON FALLS KASESE for Queen Elizabeth Park MALINDI	INN/2 INN/4 INV/2 INV/4 EC/PT IMV/1 IQE/1 INZ/3 INZ/6 INX/2 INX/3	Sat-Mon Thu-Mon Tue-Fri Sat-Fri Sun Mon-Thu Mon-Thu Thu-Sun Wed/Sun	(3) Shs. 660/- (5) Shs. 1075/- (5) Shs. 650/- (7) Shs. 1130/- (1) Shs. 170/- (4) Shs. 1140/- (4) Shs. 945/- (2) Shs. 285/- (4) Shs. 370/- (4) Shs. 550/- (3) Shs. 330/- (5) Shs. 410/-
MAFIA	SALISBURY including Kariba, Victoria Falls	IMV/1 ENI/1 EN/2X EN/7X	Fri-Tue Tue-Sat Tue-Sat	(5) Shs. 960/- (5) Shs. 1510/- (10) Shs. 1745/- (14) Shs. 1870/-
DURBAN including Zanzibar, Lourenco Marques		ESA/1 ESA/2 ESA/3 ESA/4	Tue-Sat Wed-Sat Wed-Sat Wed-Sat	(19) Shs. 2025/- (25) Shs. 1995/- (18) Shs. 1955/- (25) Shs. 2085/-
NDOLA	MALINDI or MOMBASA	EA/3 EA/5	Fri-Thu Sun-Sat	(14) £71 0 Od. (14) £71 0 Od.
SALISBURY	MALINDI or MOMBASA	EA/1 EA/4	Wed-Tue Fri-Thu	(14) £74 0 Od. (14) £73 0 Od.
TANGA	SALISBURY including Kariba, Victoria Falls	ET/IX	Sun-Sun	(8) Shs. 1820/-
ZANZIBAR	SALISBURY including Kariba, Victoria Falls	EZ/IX	Sun-Sun	(8) Shs. 1840/-

If you are a resident in East Africa OR If you are visiting East Africa OR If you wish to "break" your journey in East Africa

Why Not Plan a visit to the Game Parks. Sample the thrill of deep-sea fishing. Relax on the beach at Durban, Mombasa or Malindi, or Marvel at nature's wonder, the Victoria Falls

The above tours are a selection from the variety offered by East African Airways Consult your TRAVEL AGENT or ANY E.A.A. OFFICE

Fares and Schedules are subject to alteration without notice

Fly among friends by



**EAST AFRICAN AIRWAYS**  
**Business Excursions ARE VALID FOR 6 DAYS WITH STOP-OVERS**

Whichever way you travel, it's cheaper to fly by E.A.A. Businessman's Excursions. To prove our point — particularly in relation to driving — study this table of comparative figures:—

	Return Road Mileage	Business Excursion Fare	Approx. Cost per Road Mile
Nairobi—Dar-es-Salaam	1,392	495/-	36 cts.
Nairobi—Moshi	450	170/-	38 cts.
Dar-es-Salaam—Arusha	1,046	380/-	36 cts.
Dar-es-Salaam—Mombasa	950	248/-	26 cts.
Kampala—Dar-es-Salaam	2,204	886/-	40 cts.
Kampala—Nairobi	820	396/-	48 cts.



# 15 DAYS IN DURBAN FOR £97.10.0



on an EAA all-inclusive holiday

These new low-cost EAA holidays are just what so many people have been waiting for who have dreamed of a holiday in South Africa. Durban has everything the holiday-maker could wish for, it is a colourful modern city with wide thoroughfares and a character all its own, from the rickshaws on the marine parade to the abundance of fine shops, theatres and restaurants. Along the beautiful coastline there are many sunny beaches and coves with excellent surfing and big game fishing as well as sporting facilities of every kind. When you can make day-trips to the highlands and beauty spots of Natal - the Garden Province.

**From Nairobi**

15 days from £97.10.0 (Shs. 1950/-)  
15 days in Durban, plus one day and night in Zanzibar.

18 days from £97.15.0 (Shs. 1955/-)  
12 days in Durban, plus 3 days in Lourenço Marques.

These costs include return tourist class air fare, hotel accommodation and all meals during your stay. Ask your Travel Agent for full details.

Fly among friends by



**EAST AFRICAN AIRWAYS**

TABLE No. 11 EAST, CENTRAL, PORTUGUESE EAST AND SOUTH AFRICA

DAY		MON.		TUES.		WED.	FRI.		SAT.			SUN.		
		VIS	CAN	DC3	DC3	DC3	VIS	VIS	VIS	COM	DC3	CAN	DC3	VIS
+	AIRCRAFT	CE	EC	EC	EC	EC	CE	CE	CE	EC	EC	EC	EC	CE
-	SERVICE	CE	EC	EC	EC	EC	CE	CE	CE	EC	EC	EC	EC	CE
GMT	FLIGHT No.	805	507	003	151	103	807	883	871	711	003	509	003	801
	CLASS OF SERVICE	T	T	T	T	T	T	T	T	F/T	T	T	T	T
+3	NAIROBI dep	1700	1000			0900	1015		1050		1100		1015*	
+3	MOSHI arr		?			1010			?					
+3	MALINDI dep			0910		1030				0910		0910		
+3	MOMBASA arr		1120	0945						1000		1000	?	
+3	TANGA dep		1150							1055	?	1055		
+3	ZANZIBAR dep	x		1150			x			1150		1150		
+3	DAR-ES-SALAAM arr		1255	1215		1215				1215	1305	1215	1205*	
+3	MTWARA dep		1340		1330	1330					1350		1250	
+3	MBEYA arr					1515								
+3	MBEYA dep				1610	1630				x				
+2	ABERCORN arr					1630								
+2	NDOLA arr	1950			1900		1305				1635		x	
+2	LUSAKA dep	2020					1350	1545			1720			
+2	LUSAKA arr	2120						1635						
+2	BLANTYRE dep	2145						1700						
+2	BLANTYRE arr		1550										1435	
+2	BLANTYRE dep		1635										1515	
+2	SALISBURY arr		2255	1805				1810			1905		1635	
+2	SALISBURY dep								1015				1705	
+2	LIVINGSTONE arr						1530							
+2	LIVINGSTONE dep						1600							
+2	JOHANNESBURG arr						1825			1405			1935	
+2	MOZAMBIQUE arr					1640			x					
+2	MOZAMBIQUE dep					THUR. 0645								
+2	BEIRA arr					1000								
+2	LOURENÇO MARQUES arr					1030								
+2	LOURENÇO MARQUES dep					1320								
+2	DURBAN arr					1420								
+2	DURBAN dep					1615			1330					

NOTES: \*NO LOCAL TRAFFIC NAIROBI-DAR-ES-SALAAM ON SERVICE CE.801.

TRAFFIC RIGHTS: No Traffic may be carried between points in Portuguese East Africa nor from Portuguese East Africa to the Republic of South Africa.

EC.151 and 152: Full traffic rights are available between all stations.

EC.507 and 508: Traffic may be carried between East Africa and the Federation or vice versa; including passengers with a stopover at Blantyre.

EC.509 and 510: Traffic on these services between the Federation of Rhodesia and Nyasaland and East Africa can be carried. Traffic from points in the Republic of South Africa to Nairobi and points beyond and vice versa, in addition to traffic from the Federation of Rhodesia and Nyasaland to points beyond Nairobi and vice versa, can be carried, but fares should be checked with the nearest East African Airways or Central African Airways office. No traffic may be carried between Salisbury and Ndola or vice versa.

TABLE No. 12

**SOUTH, PORTUGUESE EAST, CENTRAL AND EAST AFRICA**

DAY	MON.		WED.		THUR.		FRI.		SAT.			SUN.			MON.
	AIRCRAFT	VIS	DC3	CAN	DC3	VIS	DC3	VIS	DC3	COM	DC3	CAN	DC3	DC3	
SERVICE	CE	EC	EC	EC	CE	EC	EC	CE	EC	CE	EC	EC	EC	EC	
GMT FLIGHT No.	804	152	508	004	806	104	802	028	712	054	510	222	004		
CLASS OF SERVICE	T	T	T	T	T	T	T	T	T	F/T	T	T	T	T	
+2 DURBAN dep							0745								
+2 LOURENCO MARGUES arr							0940								
+2 LOURENCO MARGUES dep							1000								
+2 BEIRA arr							x								
+2 BEIRA dep							1250								
+2 MOZAMBIQUE arr							1315								
+2 MOZAMBIQUE dep							1625								
+2 JOHANNESBURG arr							SAT. 0730								
+2 JOHANNESBURG dep						0930		0800		1630					
+2 LIVINGSTONE arr						1155		x							
+2 LIVINGSTONE dep						1235		1025							
+2 SALISBURY arr								1120				1030			
+2 SALISBURY dep	0900		1130					1240							
+2 BLANTYRE arr			1300					1320							
+2 BLANTYRE dep			1330			x									
+2 LUSAKA arr															
+2 LUSAKA dep															
+2 NDOLA arr	1040					1415						1220			
+2 NDOLA dep	1115	0800				1445						1300			
+2 ABERCORN arr			1010												
+2 ABERCORN dep			1045	x				x							
+3 MBEYA arr			1245												
+3 MBEYA dep			x												
+3 MBEYA dep			1345							x			x		
+3 MTWARA arr							1035								
+3 MTWARA dep							1055								
+3 DAR-ES-SALAAM arr			1625	1735			1230	1705				1740			
+3 DAR-ES-SALAAM dep	x		1820				x	*1755	1800			1825	1830	1400	
+3 ZANZIBAR arr												1855			
+3 ZANZIBAR dep															
+3 MOMBASA arr			1925					1920						1625	
+3 MOMBASA dep			1955	1640				1945			0940			1640	
+3 MALINDI arr				1715							1015			1715	
+3 MALINDI dep							1550								
+3 MALINDI dep							1610								
+3 NAIROBI arr	1605		2115		1935	1720	*1945	2130	2140			2030			

NOTE: \* NO LOCAL TRAFFIC DAR-ES-SALAAM—NAIROBI ON SERVICE CE.802.

**TRAFFIC RIGHTS:** No Traffic may be carried from the Republic of South Africa to points in Portuguese East Africa, nor between points in Portuguese East Africa.

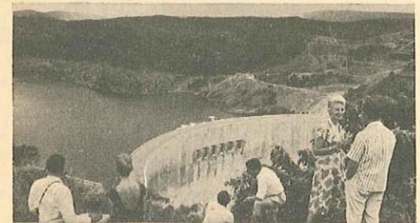
EC.151 and 152: Full traffic rights are available between all stations.

EC.507 and 508: Traffic may be carried between East Africa and the Federation or vice versa; including passengers with a stopover at Blantyre.

EC.509 and 510: Traffic on these services between the Federation of Rhodesia and Nyasaland and East Africa can be carried. Traffic from points in the Republic of South Africa to Nairobi and points beyond and vice versa, in addition to traffic from the Federation of Rhodesia and Nyasaland to points beyond Nairobi and vice versa, can be carried, but fares should be checked with the nearest East African Airways or Central African Airways office. No traffic may be carried between Salisbury and Ndola or vice versa.



See the splendours of Rhodesia



on a **FLAME LILY HOLIDAY**



**Many wonderful all-inclusive holidays from £75.10s**

Sample holidays below include your tourist return air fares by EAA or CAA and good hotel accommodation throughout. You save up to 25% over normal hotel rates and air fares.

**SAMPLE HOLIDAYS FROM NAIROBI**

5 Days Nairobi, Salisbury, Kariba, Victoria Falls, Nairobi.  
Standard Holiday from Shs. 1,250/-  
De Luxe Holiday from Shs. 1,600/-

14 Days Nairobi, Mombasa, Zanzibar, Dar es Salaam, Salisbury, Kariba, Victoria Falls, Nairobi.  
Standard Holiday from Shs. 1,870/-  
De Luxe Holiday from Shs. 2,000/-

Special Fare to Victoria Falls  
8-day Tourist Excursion return fare Shs. 1,250/-  
Accommodation not included.

Your friendly travel agent will tell you about the many other all-inclusive holidays.

Write for free attractive brochures and maps to  
Rhodesia and Nyasaland Tourist Office,  
Pearl Assurance Building, Queensway,  
P.O. Box 2479, Nairobi.



**EAST AFRICAN AIRWAYS**  
**CENTRAL AFRICAN AIRWAYS**

**TABLE No. 13 SOUTH AFRICA / EAST AFRICA / BRITAIN**

DAY	MON.	TUES.	WED.	THUR.	SAT.
+	AIRCRAFT	COM	DC3 COM	BRIT CAN COM	COM DC3 COM
-	SERVICE	EC	EC EC	EC EC EC	EC EC EC
GMT	FLIGHT No.	704	026 718	608* 508 716	714 720 038 712
	CLASS OF SERVICE	F/T/Y	T F/T/Y	C T F/T/Y	F/T/Y T F/T/Y
+2 JOHANNESBURG	dep			See Sailing List Below	1630
+3 DAR-ES-SALAAM	dep	2030	1700	1820	2030 1800
+3 NAIROBI	arr	2145	2100	2115	2145 2130 2140
+3 ENTEBBE	arr				2240 0945 2240
+2 BENGHAZI	dep				1135 0930 1600
+2 CAIRO	arr				0430 0430 0555
+1 ROME	dep				0720 0805 0640
0 LONDON	arr	0700	0700	0700	0815 1930 0815

NOTES: \* Traffic may be carried only between London and points in British East Africa and vice versa. No stopover is permitted.  
 † Service EC.608 'C' (Skycoach) will operate on 7th and 28th November.  
 ‡ From 15th October until 28th October times at London should read 1 hour later.

**TABLE No. 14 BRITAIN / EAST AFRICA / SOUTH AFRICA**

DAY	TUES.	WED.	THUR.	FRI.	SAT.	SUN.
+	AIRCRAFT	BRIT COM	DC3 COM	COM	CAN COM	CAN COM DC3 COM
-	SERVICE	EC EC	EC EC	EC EC	EC EC	EC EC EC
GMT	FLIGHT No.	607* 715	033 713	719	423 711	509 717 033 703
	CLASS OF SERVICE	C F/T/Y	T F/T/Y	F/T/Y	T F/T/Y	T F/T/Y
0 LONDON	dep	1545 1825	1930 1745	1915	2315	2050
+1 ROME	arr	2145 2230	2250 2335	2235 2320		
+2 CAIRO	arr					
+2 BENGHAZI	arr					
+3 ENTEBBE	dep					
+3 NAIROBI	arr					
+3 DAR-ES-SALAAM	arr					
+2 JOHANNESBURG	arr					

NOTES: \* Traffic may be carried only between London and points in British East Africa and vice versa. No stopover is permitted.  
 † Service EC.607 Coach Class will operate ex London on 6th and 27th November 1962.  
 ‡ From 15th October until 28th October times at London should read 1 hour later.

**TABLE No. 15 EAST AFRICA/ADEN/PAKISTAN/INDIA**

DAY	MON.	FRI.	
+	AIRCRAFT	COM	COM
-	SERVICE	EC	EC
GMT	FLIGHT No.	736	734
	CLASS OF SERVICE	F/T/Y	F/T/Y
+3 NAIROBI	dep	2000	1045
+3 ADEN	arr	2245	1330
	dep	2345	1430
+5 KARACHI	arr	0530	2015
	dep	0630	2115
+5 1/2 BOMBAY	arr	0840	2325

**FLY TODAY**  
with  
**TIME TO PAY**  
**10%**  
DOWN  
Take advantage of  
**EAST AFRICAN AIRWAYS**  
**CREDIT TRAVEL PLAN**

**TABLE No. 16 INDIA / PAKISTAN / ADEN EAST AFRICA**

DAY	TUES.	SAT.	
+	AIRCRAFT	COM	COM
-	SERVICE	EC	EC
GMT	FLIGHT No.	735	733
	CLASS OF SERVICE	F/T/Y	F/T/Y
+5 1/2 BOMBAY	dep	1130	0100
+5 KARACHI	arr	1240	0210
	dep	1340	0310
+3 ADEN	arr	1555	0525
	dep	1655	0625
+3 NAIROBI	arr	1940	0910














### FARES AND RATES GUIDE

Tanga continued						Tanga continued						Zanzibar continued						
From	Class	Validity	Single	Return	Cargo Per Kilo up to 45 Kgs.	From	Class	Validity	Single	Return	Cargo Per Kilo up to 45 Kgs.	From	Class	Validity	Single	Return	Cargo Per Kilo up to 45 Kgs.	
Durban	T	6 Months (DC3)	1209	2177	—	Zanzibar	T	6 Months	90	162	0 60	Lourenco Marques	T	6 Months (DC3)	895	1611	—	
	T	12/30 Days (DC3)	1025	1845	—		* T	B/E 6 Days Spec. Exc.	—	105	90		T	14/30 Days (DC3)	—	1193	—	
Khartoum	F	12 Months	1940	3492	—	Tororo	to	T	6 Months	135	243	Sh. Ct.	Lusaka	T	13/45 Days (DC3)	—	960	—
	T	12 Months	1300	2484	8 40	Entebbe	T	6 Months	80	144	0 60	Lushoto	T	6 Months	170	306	1 25	
Lindi	T	6 Months	310	558	2 60	Jinja	T	6 Months	155	279	1 20		T	30 Days	—	275	—	
Lourenco Marques	T	6 Months	965	1737	—	Kampala	T	6 Months	110	198	0 80	Mafia	T	6 Months	135	243	0 95	
	F	12 Months	4680	8424	—	Kisumu	T	6 Months	65	117	0 50	Malindi	T	6 Months	240	432	1 80	
London	Y	12 Months	2600	4680	15 00	Kitale	T	6 Months	250	450	1 85		T	B/E 6 Days	—	280	—	
	Y	12 Months	2360	4248	—	Nairobi	T	6 Months	—	—	—	Mombasa	* T	Spec. Exc.	—	240	—	
Lushoto	T	6 Months	100	180	0 70							T	6 Months	170	306	1 35		
	T	Spec. Exc.	—	120	—	Zanzibar	to	T	6 Months	455	819	Sh. Ct.		T	B/E 6 Days	—	198	—
Mafia	T	6 Months	215	387	1 55	Abercorn	T	13/45 Days	—	570	—		T	Spec. Exc.	—	170	—	
Malindi	T	6 Months	160	288	1 20	Aden	F	12 Months	1440	2592	—	Mombo	T	6 Months	145	261	1 05	
	T	B/E 6 Days	—	180	—	Arusha	T	12 Months	1110	1998	6 70		T	30 Days	—	230	—	
Mombasa	T	6 Months	95	171	0 75	Blantyre	T	6 Months	315	567	2 30	Moshi	* T	Spec. Exc.	—	145	—	
	T	B/E 6 Days	—	95	—	Dar-es-Salaam	T	13/45 Days	—	690	—		T	6 Months	270	486	2 00	
Mombo	* T	Spec. Exc.	—	75	0 50		T	B/E 6 Days	—	370	—		T	B/E 6 Days	—	320	—	
Moshi	T	6 Months	195	351	1 45	Durban	T	6 Months	1193	2148	—	Mtwara	T	Spec. Exc.	—	270	—	
	T	B/E 6 Days	—	220	—		T	12/30 Days (DC3)	955	1719	—	Nachingwea	T	6 Months	315	567	2 30	
Mtwara	T	6 Months	340	612	2 90	Khartoum	F	12 Months	2040	3672	—	Nairobi	T	6 Months	395	711	3 25	
Nachingwea	T	6 Months	340	612	2 80		T	12 Months	1440	2592	8 90		T	B/E 6 Days	—	460	—	
Nairobi	T	6 Months	320	576	2 70	Lindi	T	6 Months	265	477	2 00	Ndola	T	12/30 Days	—	430	—	
	T	B/E 6 Days	—	370	—	London	F	12 Months	4680	8424	—	Pemba	* T	Spec. Exc.	—	316	—	
	T	12/30 Days	—	330	—		Y	12 Months	2660	4788	15 10	Rome	F	12 Months	4300	7740	—	
Pemba	* T	Spec. Exc.	—	275	—		Y	12 Months	2380	4284	—	Salisbury	Y	12 Months	2520	4536	13 50	
	T	6 Months	60	108	0 45		†	12 Months	2095	3771	—	Tanga	T	6 Months	90	162	0 60	
Rome	Y	12 Months	4240	7632	13 30		†	12 Months	—	—	—		T	B/E 6 Days	—	105	—	
	Y	12 Months	2500	4500	10 00								T	Spec. Exc.	—	90	—	

F First Class      Y Economy Class      B E Business Excursion      \* Bank and Public Holiday Excursion. Details on application  
 T Tourist Class      C Skycoach Class      † Limited stopover facilities. Details on application      † Stopovers en route not permitted

All Special and Business Excursion Fares between points in East African Territories are saleable only within these territories.

## EAA EXCURSIONS

 <h3>Family</h3> <p>Travel Plan. The family man can take advantage of this special concession fare and save considerably. Father pays normal return whilst Mother pays single fare for return journey. Corresponding reductions are given to children. This concession is also available on Regional services between East and Central Africa.</p>	 <h3>Big Game</h3> <p>Queen Elizabeth, Murchison Falls, Serengeti, Lake Manyara and Royal Tsavo National Parks, together with Ngorongoro Crater and Masai Amboseli Game Reserve, are among exciting excursions offered by E.A.A. These short-duration, inclusive tours are cheap and comfortable ways of seeing the big game and bird life that East Africa has to offer.</p>	 <h3>Sport</h3> <p>Sportsmen's Concession fares are available and in most cases amount to the single fare only for the return journey. Special concessions for sportsmen are also available on Regional services between East and Central Africa for a group of four or more persons.</p>
 <h3>Holidays</h3> <p>E.A.A. offer a comprehensive choice of all inclusive holidays at Mombasa and Malindi, where swimming, surfing, goggling and fishing are unsurpassed as well as Big Game Fishing holidays at Mafia. E.A.A. also offer exciting all-inclusive holidays in South Africa at very reasonable cost. Please ask for details.</p>	 <h3>Businessmen</h3> <p>E.A.A.'s Business Excursion fares give you a saving of up to 35% on normal return fares and the maximum validity is six days. Stopovers are permitted at no additional fare, provided all travel is completed within six days. Flying is not only cheaper, but less fatiguing, faster, more convenient and more comfortable.</p>	<h3>Credit Travel</h3> <p>Only 10% deposit is required for any flight by East African Airways, which will enable you to fly now and pay later, with easy repayment terms for the balance of the fare. An EAA AIR TRAVEL CARD can be obtained, too. This entitled you to an air ticket to any East African destination on demand.</p>

## EAST AFRICAN AIRWAYS

## EAST AFRICAN AIRWAYS OFFICES AND HANDLING AGENTS

TOWN	OFFICE	ADDRESS	TELEPHONE	TELEGRAMS
ABERCORN (Northern Rhodesia)	Central African Airways	Shop No. 1 'Little Poland'	265	Centralair
ADEN (Aden Colony)	Aden Airways Ltd. East African Airways Representative	Queen Arwa Road, Crater Room 46, P & O House Tawahi, Aden. P.O. Box 1189	2224/5 & 2258 4436	Adenair Airservice
ARUA (Uganda)	Arua Bus Syndicate Ltd.	P.O. Box 40	—	Airservice
ARUSHA (Tanganyika)	Cooper Ltd.	P.O. Box 142	2001	Airservice
BEIRA (Mozambique)	Divisao de Exploracao dos Transportes Aereos (D.E.T.A.)	—	3467	Detra
BENGHAZI (Libya)	Mitchell Cotts & Co. (Libya) Ltd.	18 Sharia Omar Mukhtar Robins Road, P.O. Box 84	1422	Speedbird
BLANTYRE (Nyasaland)	Central African Airways	202-B Vir Nariman Road, Churchgate, Bombay 1	3145	Centralair
BOMBAY (India)	British Overseas Airways Corporation East African Airways Representative	C/o B.O.A.C. as above	242211/2/3/4/5	Speedbird Airservice
DAR-ES-SALAAM (Tanganyika)	East African Airways	Tancot House, Main Avenue, P.O. Box 543	21251	Airservice
DURBAN (South Africa)	South African Airways	South African Railways and Harbours, New Administration Building, Smith Street Marine Hotel Building, 14 Gardiner Street	66941 62275	Railplane
ELDORET (Kenya)	East African Airways Representative	P.O. Box 85	85 & 292	Estafica
ENTEBBE (Uganda)	Hughes Ltd.	Entebbe Airport, P.O. Box 68	781/2/3	Airservice
GULU (Uganda)	H. S. Patel & Co. Ltd.	P.O. Box 15	15	Airservice
IRINGA (Tanganyika)	Maninga Estates (J. G. de Brito)	P.O. Box 69	35	Airservice
JINJA (Uganda)	Equatorial Agencies Ltd.	P.O. Box 556	2492	Airservice
JOHANNESBURG (South Africa)	South African Airways East African Airways Representative	Leysds Street 125 Maritime House, Loveday Street	23-7682 33-8210	Railplane Eastair
KASESE (Uganda)	Kilembe Mines Ltd.	P.O. Box 1	54265	Kilemines
KAMPALA (Uganda)	East African Airways	Airways House, cor. Harcourt Avenue and Colville Street, P.O. Box 523	(4 lines)	Airservice
KARACHI (Pakistan)	Pakistan International Airlines East African Airways Representative	Central Hotel Building, Club Road C/o Pakistan International Airlines as above	Exch. 51061 Res. 54378	Pakintair Airservice
KHARTOUM (Sudan)	British Overseas Airways Corporation	Wingate Avenue, P.O. Box 250	3171 & 7172/3	Speedbird
KILWA (Tanganyika)	A. Baumann & Co. (E.A.) Ltd.	P.O. Box Kilwa	—	Airservice
KISUMU (Kenya)	Kisumu Travel Service	P.O. Box 764	64	Airservice
KITALE (Kenya)	Hughes (Kitale) Ltd.	P.O. Box 97	44	Airservice
LINDI (Tanganyika)	Twentsche Overseas Trading Co. Ltd.	P.O. Box 33	161	Airservice
LONDON (England)	British Overseas Airways Corporation	Airways Terminal, Buckingham Palace Road London, S.W.1.	Victoria 2323	Speedbird
LOURENCO MARQUES (Mozambique)	Divisao de Exploracao dos Transportes Aereos (D.E.T.A.)	103 Rue Araujo	8216	Detra
LUMBO (Mozambique)	Divisao de Exploracao dos Transportes Aereos (D.E.T.A.)	—	—	Detra
LUSHOTO/MOMBO (Tanganyika)	Lushoto Provision Stores	P.O. Box 48	45	Provision Store (Lushoto)
MAFIA (Tanganyika)	H. J. Stanley & Sons Ltd.	Mafia Island, T.T., P.O. Box 32	—	Stanleysons
MALINDI (Kenya)	Garry's	P.O. Box 71	13	—
MBEYA (Tanganyika)	East African Airways	Standard Building, Main Avenue, P.O. Mbeya	61	Airservice
MOMBASA (Kenya)	East African Airways	Jubilee Insurance Building, Kilindini Road, P.O. Box 677	6251	Airservice
MOSHI (Tanganyika)	Emslies Ltd.	P.O. Box 29	2701	Airservice
MTWARA (Tanganyika)	Twentsche Overseas Trading Co. Ltd.	P.O. Box 55	47	Airservice
MUSOMA (Tanganyika)	Musoma Emporium (Tanganyika) Ltd.	P.O. Box 19	—	Muemporium
MWANZA (Tanganyika)	East African Airways	P.O. Box 592	2249	Airservice
NACHINGWEA (Tanganyika)	Central Africa Transport Co.	P.O. Box 154	5	Airways
NAIROBI (Kenya)	East African Airways	Mackinnon Building, Delamere Avenue P.O. Box 30030	26451	Airservice
NDOLA (Northern Rhodesia)	Central African Airways	Airways Terminal, Sadler House Sadler Street, P.O. Box 1010	26451	Airservice
NJOMBE (Tanganyika)	Mrs. Iris Taylor	Airways Terminal, The Broadway, P.O. Box 184 C/o Tanganyika Wattle Co. Ltd., Njombe, T.T.	2439, 3225, 2763	Centralair Airservice
PEMBA (Zanzibar Protectorate)	Smith Mackenzie & Co. Ltd.	P.O. Box 92, Chake Chake, Pemba	62	—
ROME (Italy)	British European Airways	Hotel Quirinale, Via Nazionale 6a	489111	Bealine
SALISBURY (Southern Rhodesia)	Central African Airways	Airways Terminal, P.O. Box 1319	61471	Centralair
SAO HILL (Tanganyika)	East African Airways, Area Sales Manager	Harvest House, Baker Avenue	22660	Airservice
SONGEA (Tanganyika)	Sao Hill-Mufindi Farmers' Association	P.O. John's Corner, Sao Hill Airfield	—	Airservice
SOROTI (Uganda)	Twentsche Overseas Trading Co. Ltd.	P.O. Box 15	—	Airservice
TABORA (Tanganyika)	Hasham Mitha & Co. Ltd.	P.O. Box 54	10	Airservice
TANGA (Tanganyika)	A.J. Nazareth & Co.	P.O. Box 115	—	Airservice
TORORO (Uganda)	East African Airways	Ngamiani Street, P.O. Box 660	7171/2	Airservice
TORORO (Uganda)	Bawa Travel Service	P.O. Box 16	6	Airservice
ZANZIBAR (Zanzibar Protectorate)	East African Airways	Vuga Road, P.O. Box 773	2181 (2 lines)	Airservice

EAST AFRICAN AIRWAYS CORPORATION, HEAD OFFICE: P. O. BOX 19002, EMBAKASI, NAIROBI AIRPORT. TEL: 82222. TELEGRAMS: AIRSERVICE

EUROPE TO AFRICA - QUADRIpartite SERVICES

GREAT BRITAIN-EUROPE-LIBYA-U.A.R.-SUDAN-REPUBLIC OF CONGO-AURITIUS-EAST, CENTRAL & SOUTH AFRICA

(NOTE: Times at London prior to 28th October, should read one hour later.)

+ - GMT	DAY AIRCRAFT SERVICE FLIGHT No. CLASS OF SERVICE	MONDAY		TUESDAY		WEDNESDAY		THURSDAY		FRIDAY		SATURDAY		SUNDAY						
		COM BA F/T/Y	COM BR F/T/Y	COM BA F/T/Y	COM EC F/T/Y	COM BA F/T/Y	COM SA F/T/Y	COM EC F/T/Y	COM BR F/T/Y	COM BA F/T/Y	COM SA F/T/Y	COM EC F/T/Y	COM BA F/T/Y	COM SA F/T/Y	COM BR F/T/Y	COM EC F/T/Y				
EFFECTIVE DATE IN OCTOBER		15th	22nd	16th	16th	17th	17th	17th	18th	18th	18th	19th	19th	20th	20th	21st	21st	21st	14th	
0	LONDON	dep	1815	2000	1800	1825	1800	1830	1930	2000	1745	1800	1830	1800	1915	2200	1800	1830	1830	2050
+1	AMSTERDAM	arr	X	X	X	X	X	X	X	X	X	X	X	X	X	X	X	X	X	2030
+1	PARIS	arr	1955	X	X	X	X	X	X	X	X	X	X	X	X	X	X	X	X	2115
+1	FRANKFURT	arr	2040	X	X	X	X	X	X	X	X	X	X	X	X	X	X	X	X	2115
+1	ZURICH	arr	2100	X	X	X	X	X	X	X	X	X	X	X	X	X	X	X	X	2115
+1	ROME	arr	2225	2120	2145	2120	2120	2250	2030	2100	2130	2335	2120	2310	2335	2120	2310	2335	2325	2325
+2	ATHENS	arr	2310	2210	2230	2210	2335	2335	2315	2315	2359	2210	2320	2210	2355	2330	2325	2330	2225	0010
+2	BENGHAZI	arr	X	X	X	X	X	X	X	X	X	X	X	X	X	X	X	X	X	0245
+2	CAIRO	arr	X	X	X	X	X	X	X	X	X	X	X	X	X	X	X	X	X	0345
+2	KHARTOUM	arr	X	X	X	X	X	X	X	X	X	X	X	X	X	X	X	X	X	0345
+3	ENTEBBE	arr	X	X	X	X	X	X	X	X	X	X	X	X	X	X	X	X	X	0345
+3	NAIROBI	arr	1045	1130	0840	0840	0835	1020	0655	0745	0840	1005	1230	0840	1250	1245	1000	0855	0840	1020
+3	DAR-ES-SALAAM	arr	1130	1250	0940	0940	0930	1115	0845	0915	0930	1050	1320	0930	1250	1245	1050	0945	0925	1115
+4	MAURITIUS	arr	1245	X	X	X	X	X	X	X	X	X	X	X	X	X	X	X	X	1230
+1	BRAZZAVILLE	arr	0535	X	X	X	X	X	X	X	X	X	X	X	X	X	X	X	X	1515
+2	NDOLA	arr	0620	X	X	X	X	X	X	X	X	X	X	X	X	X	X	X	X	1540
+2	LUSAKA	arr	X	X	X	X	X	X	X	X	X	X	X	X	X	X	X	X	X	1540
+2	SALISBURY	arr	X	X	X	X	X	X	X	X	X	X	X	X	X	X	X	X	X	1540
+2	JOHANNESBURG	arr	X	X	X	X	X	X	X	X	X	X	X	X	X	X	X	X	X	1540

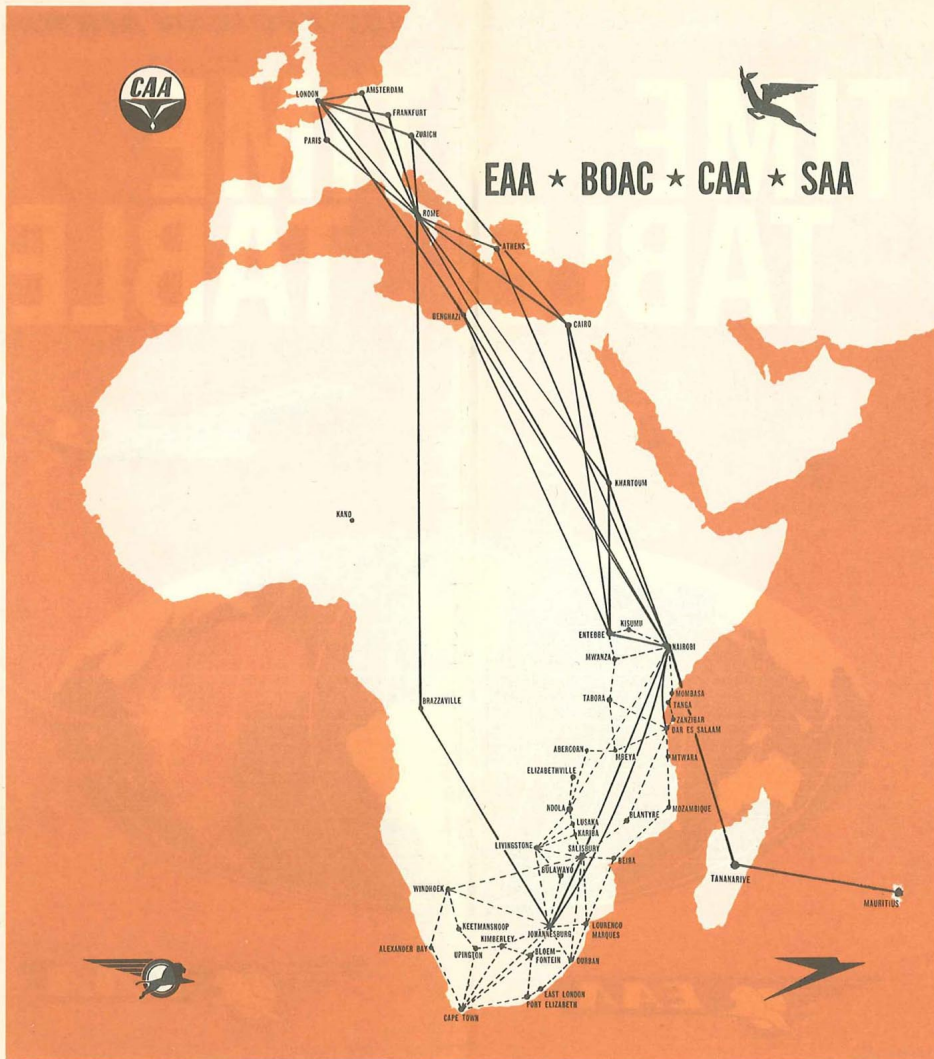
NOTES: 1. BR.101 and BR.211 Services operate from Gatwick Airport.  
2. Special fares apply for travel by pure jet services between South Africa/Central Africa and Central Africa/East Africa. Details on Application.  
3. B707-Boeing 707; BRIT-Britannia.

AFRICA TO EUROPE - QUADRIpartite SERVICES

SOUTH, CENTRAL & EAST AFRICA-AURITIUS-REPUBLIC OF CONGO-SUDAN-U.A.R.-LIBYA-EUROPE-GREAT BRITAIN

+ - GMT	DAY AIRCRAFT SERVICE FLIGHT No. CLASS OF SERVICE	MONDAY		TUESDAY		WEDNESDAY		THURSDAY		FRIDAY		SATURDAY		SUNDAY						
		COM BA F/T/Y	COM BR F/T/Y	COM BA F/T/Y	COM EC F/T/Y	COM BA F/T/Y	COM SA F/T/Y	COM EC F/T/Y	COM BR F/T/Y	COM BA F/T/Y	COM SA F/T/Y	COM EC F/T/Y	COM BA F/T/Y	COM SA F/T/Y	COM BR F/T/Y	COM EC F/T/Y				
EFFECTIVE DATE IN OCTOBER		15th	22nd	15th	16th	16th	17th	17th	17th	18th	18th	(21)	19th	19th	20th	20th	20th	21st	21st	28th
+2	JOHANNESBURG	dep	1715	X	1630	X	1715	1845	1715	1815	1845	1815	1845	1630	1715	2030	1815	1845	X	X
+2	SALISBURY	arr	1850	X	1805	X	1850	2020	1850	2020	2105	1850	2020	1850	2020	2105	1850	2020	2105	2105
+2	LUSAKA	arr	1935	X	1850	X	1935	2105	1935	2105	2105	1935	2105	1935	2105	2105	1935	2105	2105	2105
+2	NDOLA	arr	X	X	X	X	X	X	X	X	X	X	X	X	X	X	X	X	X	X
+1	BRAZZAVILLE	arr	X	X	X	X	X	X	X	X	X	X	X	X	X	X	X	X	X	X
+4	MAURITIUS	arr	1715	X	X	X	X	X	X	X	X	X	X	X	X	X	X	X	X	X
+3	DAR-ES-SALAAM	arr	X	X	X	X	X	X	X	X	X	X	X	X	X	X	X	X	X	X
+3	NAIROBI	arr	2330	2040	2145	2330	0045	2240	2330	2145	2240	2330	2145	2240	2330	2145	2240	2330	2145	2000
+3	ENTEBBE	arr	0030	2130	2240	2130	2240	0030	0030	0030	0030	2105	0030	0030	0030	0030	0030	0030	0030	2250
+2	KHARTOUM	arr	0210	2320	X	2115	2200	0210	0210	0300	0210	0305	0210	0305	0210	0300	0210	0305	0210	0205
+2	CAIRO	arr	0300	0010	X	0300	0300	0300	0300	0300	0300	0305	0300	0305	0300	0300	0300	0305	0300	0255
+2	BENGHAZI	arr	X	X	X	X	X	X	X	X	X	X	X	X	X	X	X	X	X	X
+2	ATHENS	arr	X	X	X	X	X	X	X	X	X	X	X	X	X	X	X	X	X	X
+1	ROME	arr	0725	0435	X	0420	X	0725	0725	0555	0640	0640	0555	0725	0725	0720	0720	0720	0640	0640
+1	ZURICH	arr	0820	0530	X	0505	X	0820	0820	0640	0640	0640	0555	0725	0725	0720	0720	0720	0640	0640
+1	FRANKFURT	arr	X	X	X	X	X	X	X	X	X	X	X	X	X	X	X	X	X	X
+1	PARIS	arr	X	X	X	X	X	X	X	X	X	X	X	X	X	X	X	X	X	X
+1	AMSTERDAM	arr	X	X	X	X	X	X	X	X	X	X	X	X	X	X	X	X	X	X
0	LONDON	arr	1000	0710	0700	0715	0735	0700	1000	0945	0940	1000	0815	0640	1230	1000	1000	0815	0945	0735

NOTES: 1. BR.102 and BR.212 Services operate to Gatwick Airport.  
2. Special fares apply for travel by pure jet services between South Africa/Central Africa and Central Africa/East Africa. Details on Application.  
3. B707-Boeing 707; BRIT-Britannia.



# EAA BOAC CAA SAA

Together offer you  
an unmatched  
choice of  
jet flights  
every week